

The background of the entire page is a dark, out-of-focus bokeh of various colored lights, including white, yellow, orange, red, and green, creating a vibrant and abstract pattern.

morethan**safety**

Mobilisation Guide
Workplace

Glassfibre Swingback Step Ladder

morethansafety

6102965

The Murdoch GRP swingback steps are manufactured to withstand vigorous every-day usage. Carrying the EN131 professional label means that the product has been tested to withstand at least 50,000 uses. The fibre-glass stiles makes this step your ideal partner when working around electricity. The spreader arm makes opening/closing of the stepladder simple, plus a heavy duty tool tray creates another user friendly touch.

Features & Benefits:

- Tested to 30,000 Volts
- 80mm deep treads for comfortable standing
- 2 locking arms for safety and usability
- Large anti-slip feet for ultimate grip
- Load rating 150kg
- EN131 Professional



Heavy Duty Professional Glassfibre Swingback Step Ladder

6102183

This range of ladders is ideal for trade use and is tested to a durability test of 50,000 cycles. Tested & certified to New EN131-2, Professional Improved stiles and strengthened treads as well as reinforced platform in-line with the new standard requirements.

Unique strengthening beam incorporated into non-slip treads, rubber feet, and twists as there are no tapes to snap, or flimsy arms to break. Rigid box section back legs with additional cross braces and 'k' straps for increased strength and stability.

Non conductive to 30,000 volts and so the ladder is ideal for use where electrical hazards exist.

Lower bottom tread to avoid bending of front feet. Plastic tool tray to hold tools and equipment while working.



Lytepod Adjustable Low Level Platform

morethansafety

6100573

Features & Benefits:

- Low Level Aluminum Podium Steps. Low Level Access Certified to BS8620
- Saloon gates for easy access and egress, stoppers for extra safety
- Only 2 removeable parts: platform deck and access ladder
- All models have 2 platform heights
- Anti surf as standard Compact folding dimensions. Toe boards are available
- Non removeable stabilisers



Teletower

6100208

The World's First Telescopic Mobile Scaffold Tower.

Features & Benefits:

Telescopic mechanism allows seven different platform heights from 0.33 to 2.00 metres - Working heights from 2.30 to 4.00 metres
Large folding aluminium work platform (1.4m x 0.7m) with climb through hatch
Fully erected in under 3 minutes, saving down time & man hours
Operates as a podium with low level fixed height options of 33cms & 61cms
Comprises only two parts - tower and platform (no more leaving parts in the yard!)
Integral stabilising legs with 5 optional positions & lockable castors
Includes toe-boards as standard
Integral telescopic hand & knee rails-Integral platform stabilisers
Conforms to EN1004



Glidelift Low Level Access Desk Surfer

morethansafety

6100282

The height adjustable access platform for all work up to a reach height of 4m. Evolved from our Deskglider, the hugely popular over desk platform, The Glidelift still retains its over desk capability but at last offers the most versatile, low cost, low level access platform on the market.

Features & Benefits:

- 4.00M Reach height
- 2.00M Platform height
- Lightweight 90kg
- 150KG Safe working load
- Height adjustable platform
- Compact - fits through single doors (inside & outside use)
- No assembly required
- Easily transportable
- Quick and easy to use
- Work at height compliant



Ladder Tag Kit

6011714

Kit Content:

- Replacement Ladder Tags(Pack of 20)
- Tag holders (20)
- Pen for writing on tags (20)



1 Person Travel First Aid Kit

morethansafety

7011726

Features & Benefits:

- Small, compact, zip bag
- Easy to fit in rucksack
- Light weight

Content:

- Cleansing Wipes (Sterile) QTY x2
- Washproof Plasters QTY x10
- Triangular Bandage QTY x2
- Gloves (Pair) QTY x2
- Large Sterile First Aid Dressing 18cm x 18cm QTY x1



First Aid

10 Person Workplace HSE Compliant First Aid Kit

7011727

The Standard Workplace Kit is low-medium risk ideal for small offices, shops, and libraries etc. Essential kits for variety of needs - from general first aid and catering to burns, eyewash and biohazards. A compact and durable comprehensive HSE compliant range.

Kit Content:

- Safety Pins
- Triangular Bandages
- Eye Pad Sterile Dressing
- Medium Sterile Dressing
- Large Sterile Dressing
- Nitrile Disposable Gloves Conforming to BS EN 455-1 and BS EN 455-2, large size (8-9)
- Saline Cleansing Wipes
- Plasters
- Guidance Leaflet



20 Person Workplace HSE Compliant First Aid Kit

7011728

The Standard Workplace Kit is low-medium risk ideal for small offices, shops, and libraries etc. Essential kits for variety of needs - from general first aid and catering to burns, eye-wash and biohazards. A compact and durable comprehensive HSE compliant range.

Kit Content:

- Safety Pins
- Triangular Bandages
- Eye Pad Sterile Dressing
- Medium Sterile Dressing
- Large Sterile Dressing
- Nitrile Disposable Gloves Conforming to BS EN 455-1 and BS EN 455-2, large size (8-9)
- Saline Cleansing Wipes
- Plasters
- Guidance Leaflet



First Aid

50 Person Workplace HSE Compliant First Aid Kit

7011705

The Standard Workplace Kit is low-medium risk ideal for small offices, shops, and libraries etc. Essential kits for variety of needs - from general first aid and catering to burns, eye-wash and biohazards. A compact and durable comprehensive HSE compliant range.

Kit Content:

- Safety Pins
- Triangular Bandages
- Eye Pad Sterile Dressing
- Medium Sterile Dressing
- Large Sterile Dressing
- Nitrile Disposable Gloves Conforming to BS EN 455-1 and BS EN 455-2, large size (8-9)
- Saline Cleansing Wipes
- Plasters
- Guidance Leaflet



Large BS 8599-1 2019 Catering First Aid Kit

morethansafety

7011729

The Blue Dot BS 8599-1 (2019) First aid kits have been put together especially for use in the food service industry. With health and safety being a priority in catering establishments, these kits are essential for when an accident occurs, and immediate aid is required. These kits fully conform to the BS8599-1:2019 legislation.

Kit Content:

- Instructions
- Contents Leaflet
- Medium Dressing 12cm x 12cm
- Large Dressing 18cm x 18cm
- Triangular Bandage
- Eye Pad & Bandage
- Blue Detectable Plasters
- Cleansing Wipes (Sterile)
- Blue Microporous Tape
- Nitrile Gloves (Pair)
- Blue Finger Dressing 3.5cm x 3.5cm
- Revive Aid (Resuscitation Device)
- Thermal Blanket
- Burn Dressing 10cm x 10cm
- Tuff Cut Scissors
- Conforming Bandage 7.5cm x 4.5cm



Standard Burns First Aid Kit

7010457

Blue Dot Burns Kit is effective for use at work or home and provides effective relief from a variety of burns including, scalds and sunburn. The Blue Dot Burns Kit is available in two sizes – small and medium and is an essential requirement with the workplace. Particularly where the risk of getting burn related injuries is higher.

Kit Content:

- Burn Dressing 20cm x 20cm
- Burn Dressing 10cm x 10cm
- Low Adherent Dressing 10cm x 10cm
- Low Adherent Dressing 10cm x 20cm
- Burn Gel Sachet
- Eye Wash Pods
- Crepe Bandage
- Conforming Bandage
- Gloves
- Microporous Tape
- Scissors



Standard Eye Wash Station

morethansafety

7011731

Strong ABS plastic with clear front and integrated wall bracket. Contents are kept dust and damp free. Items can be individually refilled.

Kit Content:

- 2x Sterile Eye Pad Dressing
- 2x Sterile Eye Wash Bottles

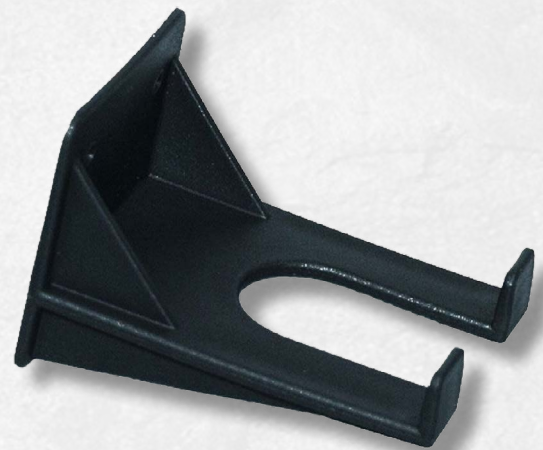


First Aid Box Wall Bracket

7011730

A simple and cost-effective wall mounting bracket for first aid kits. The bracket allows for the kit to be easily removed and used where an incident has occurred.

It is suitable to be used with all of our first aid boxes.



AED Emergency Response Kit

7011732

The ideal kit to pair with Defibrillators

Kit Content:

- 1x Razor
- 1x Protective Face Shield
- 1x Scissors
- 2x Sterile Wipes
- 1x Pair of Gloves
- 2x Gauze Swabs



Smarty Saver Wall Mount Bracket Stainless Steel

morethansafety

7011733

Wall bracket designed to hold Smarty Saver models, allowing for quick and easy access to the defibrillator.



First Aid



Smarty Saver Normal Configuration Fully Automatic Dibrillator

7011734

Automatic Smarty Saver Defibrillator. This defibrillator automatically delivers shocks, making operation easier for the user.

The Fully Automatic model will, if a shockable rhythm is detected, warn the user of the imminent shock delivery and after 5 seconds the de-fibrillating shock will be released automatically; the CPR phase will follow.

It delivers one or more de-fibrillating shocks on adult or paediatric patients affected by ventricular fibrillation or ventricular tachycardia, using a thorax impedance-compensated, biphasic truncated exponential discharge (BTE).

Features & Benefits:

- Affordable and easy to use
- Reliable and durable
- Dustproof and waterproof resistance IP rate
- Easily operated by anyone in the medical field and non-medical field too (e.g. public or private places)



CPR

Leak Diverter Kit

morethansafety

4300874

Overview:

Leaking roofs can damage valuable stock and equipment, not to mention the inconvenience of moving people and goods out of the way.

Leak Diverter deals with nuisance roof and ceiling leaks without disruption to the workplace until a permanent repair can be made. The device hangs from the roof directly under drips and leaks and diverts water to a convenient collection point. The floor beneath stays dry, the risk of slips and falls is reduced whilst damage to goods and machinery is minimised.

Adjustable hanging straps make levelling and positioning easy. Standard UK Hozelock fittings ensure water is safely channelled into the Leak Diverter reservoir drum (included in complete kit or available separately). Leak Diverter is available in four sizes in two colours, with separate accessories or as complete kit.



QHSE Approved Multi Purpose Spill Kit 240l

4300875

Packed with fast-acting sorbents to clean-up spills quickly and efficiently. 240l capacity.

General Purpose:

Coolant ~ Antifreeze ~ Oil ~ Water ~ Weak chemicals ~ Solvents

Kit Content:

- 12x Absorbent Socks (8cm x 3m)
- 100x Absorbent Pads
- 4x Disposal bag & tie
- 1x Instruction and contents sheet
- 1x Medium sized wheelie bin (240l)

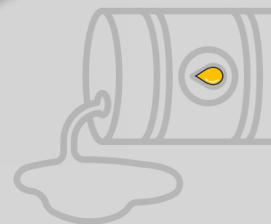


Drain Protection Kit

4100143

Preventing spills and leaks from entering drainage systems is the best way to prevent environmental pollution.

Neoprene Drain Cover (ADR10)
1kg Tub Plugging Granules
Weatherproof Holdall
(wall mountable)



QHSE Approved Oil & Fuel Only Spill Kit 240l

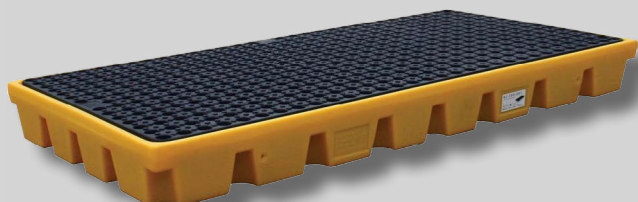
4300876

Packed with fast-acting sorbents to clean-up spills quickly and efficiently. 240l Capacity.
General Purpose:

Oil & Fuel ~ Hydraulic oil ~ Engine oil ~ Lubricating oil ~ Solvents ~ Will not absorb water

Content:

- 12x Absorbent Socks (8cm x 3m)
- 100x Absorbent Pads
- 4x Disposal bag & tie
- Instruction and contents sheet
- Medium wheelie bin (240l)



Spill Response Type ~ Bunded Workflow
Applications ~ Drum
Max Load ~ 1000kg
Absorption Capacity ~ 120L

Drum Workflow for 2x 205l Drums

4100199

- For storage of drums or numerous smaller containers
- Removable grid deck for easy cleaning
- Ideal for use in drum stores to provide effective secondary containment

CO2 XRT Fire Extinguisher

6300136

The aluminium 2kg CO2 extinguisher is used for situations involving flammable liquids and electrical hazards. One of the best selling extinguishers in the Firechief XTR range, the CO2 extinguishant is harmless to delicate equipment making it ideal for office environments.

Features & Benefits:

- Approved to BSEN3
- Kitemark and LPCB approved
- Harmless to machinery
- Aluminium alloy construction
- Corrosion resistant finish
- Squeeze grip operation
- Includes wall hanging bracket



Fire Extinguisher Maintenance Record Self Adhesive (Pack of 250)

9250914

Fire Extinguisher Maintenance Record Self Adhesive 80x160mm (Pack of 250)

| Fire Extinguisher Maintenance Record | | | | | | | | | | | | | | | | | | | | | | | | | | | | | | | | | | | | | | | | | | | | | | | | | | | | | | | |
|--|--|--|---|------|-----|-----|-----|--|--|--|--|--|--|--|--|--|--|--|--|--|--|--|--|--|--|--|--|--|--|--|--|--|--|--|--|--|--|--|--|--|--|--|--|--|--|--|--|--|--|--|--|--|----------------------------------|--|--|
| <input type="text"/> | | | Extinguisher No. | | | | | | | | | | | | | | | | | | | | | | | | | | | | | | | | | | | | | | | | | | | | | | | | | | | | |
| | | | <input type="text"/> | | | | | | | | | | | | | | | | | | | | | | | | | | | | | | | | | | | | | | | | | | | | | | | | | | | | |
| <table border="1"><thead><tr><th>Date</th><th>Code</th><th>NSD</th><th>WT.</th><th>Eng</th></tr></thead><tbody><tr><td> </td><td> </td><td> </td><td> </td><td> </td></tr><tr><td> </td><td> </td><td> </td><td> </td><td> </td></tr><tr><td> </td><td> </td><td> </td><td> </td><td> </td></tr><tr><td> </td><td> </td><td> </td><td> </td><td> </td></tr><tr><td> </td><td> </td><td> </td><td> </td><td> </td></tr><tr><td> </td><td> </td><td> </td><td> </td><td> </td></tr><tr><td> </td><td> </td><td> </td><td> </td><td> </td></tr><tr><td> </td><td> </td><td> </td><td> </td><td> </td></tr><tr><td> </td><td> </td><td> </td><td> </td><td> </td></tr></tbody></table> | | | Date | Code | NSD | WT. | Eng | | | | | | | | | | | | | | | | | | | | | | | | | | | | | | | | | | | | | | | | | | | | | | Location <input type="text"/> | | |
| | | | Date | Code | NSD | WT. | Eng | | | | | | | | | | | | | | | | | | | | | | | | | | | | | | | | | | | | | | | | | | | | | | | | |
| | | | | | | | | | | | | | | | | | | | | | | | | | | | | | | | | | | | | | | | | | | | | | | | | | | | | | | | |
| | | | | | | | | | | | | | | | | | | | | | | | | | | | | | | | | | | | | | | | | | | | | | | | | | | | | | | | |
| | | | | | | | | | | | | | | | | | | | | | | | | | | | | | | | | | | | | | | | | | | | | | | | | | | | | | | | |
| | | | | | | | | | | | | | | | | | | | | | | | | | | | | | | | | | | | | | | | | | | | | | | | | | | | | | | | |
| | | | | | | | | | | | | | | | | | | | | | | | | | | | | | | | | | | | | | | | | | | | | | | | | | | | | | | | |
| | | | | | | | | | | | | | | | | | | | | | | | | | | | | | | | | | | | | | | | | | | | | | | | | | | | | | | | |
| | | | | | | | | | | | | | | | | | | | | | | | | | | | | | | | | | | | | | | | | | | | | | | | | | | | | | | | |
| | | | | | | | | | | | | | | | | | | | | | | | | | | | | | | | | | | | | | | | | | | | | | | | | | | | | | | | |
| | | | | | | | | | | | | | | | | | | | | | | | | | | | | | | | | | | | | | | | | | | | | | | | | | | | | | | | |
| Codes C - Commissioned R - Refilled B - Basic Service E - Extended Service O - Overhaul NSD - Next Service Due Weight=Extinguisher or Cartridge Delete as appropriate | | | Commissioned Date <input type="text"/> Last Test Discharge <input type="text"/> Next Test Discharge <input type="text"/> | | | | | | | | | | | | | | | | | | | | | | | | | | | | | | | | | | | | | | | | | | | | | | | | | | | | |

8mm Fire Door Gap Gauge Kit

morethansafety

6302317

Kit Content:

- Fire Door Gap Gauge Pouch
- Fire Door Gap Gauge
- Fire Door Check Cards



Water Fire Extinguisher 6L

6300135

The Firechief XTR 6L Water Extinguisher is widely recognised and trusted by re-sellers and end users alike. Designed, developed and tested in the UK for use on A-class fires, this product carries the well-known Kitemark, LPCB and MED certification achieving superior results in tests.

Features & Benefits:

- 5 year guarantee
- Designed, developed and tested in UK
- Squeeze grip operation
- Corrosion resistant finish
- Approved to BS EN3
- Supplied with J bracket
- FXW6 Approved to 35kV dielectric test
- Internal polyethylene lining
- Comes with water spray



COSHH Floor Cupboard

morethansafety

6210178

Features & Benefits:

- QMP's range of COSHH cupboards help users to comply with the control of hazardous substances as demanded by the COSHH regulations when in the workplace
- No snag' handles with 2-point locking
- Adjustable spill-retaining galvanised shelves for superior spill management with a UDL of 70KG
- Reaction to Fire Classification EN 13501-1
- Warning stickers supplied as standard
- Fully welded all steel structure with full length heavy duty hinges with concealed fixings to prevent forced entry
- Powder coated graphite grey with Germ Guard Active Technology paint
- Floor chests have a welded integrated sump, angled lid to discourage article placement and a hasp and staple lock - padlock not supplied
- Colour: Grey



900 x 900 x 460mm

Hazardous Floor Cupboard

6210179

Features & Benefits:

- QMP's range of COSHH cupboards help users to comply with the control of hazardous substances as demanded by the COSHH regulations when in the workplace
- Adjustable spill-retaining galvanised shelves for superior spill management with a UDL of 70KG
- Integral liquid-tight sump encourages the correct handling of spills through the use of absorbents
- Stands raise cupboards by 543mm with an adjustable foot for uneven surfaces
- Powder coated yellow with Germ Guard Active Technology paint
- Hazardous Cupboards come complete with a selection of hazardous warning stickers
- Reaction to Fire Classification EN 13501-1
- Colour: Yellow



900 x 900 x 460mm

Flammable Liquid Storage Cupboard

morethansafety

6210171

Features & Benefits:

- Reaction to Fire Classification EN 13501-1
- Warning stickers supplied as standard
- Adjustable spill retaining shelves for superior spill management
- Cupboard shelves have a UDL of 50KG
- Integral liquid-tight sump encourages the correct handling of spills through the use of absorbent cleaning materials
- Cupboard stands are available which raise cupboards by 543mm with an adjustable foot for uneven surfaces
- Powder-coated red with Germ Guard Active Technology paint
- Floor chests have a welded integrated sump, angled lid to discourage article placement and a hasp and staple lock - (padlock not supplied)
- Colour: Red



900 x 900 x 460mm

Safegate 3 Gate Barrier

6021148

Features & Benefits:

- Ideal for ground works, and protecting pedestrianised areas
- High density Polyethylene
- Prevent access to open manholes, drain, areas of wet flooring, trip hazards and spillages
- Compact design makes it ideal for use in workshops and even supermarkets
- One of the fastest barriers to deploy
- All packages are supplied with chapter 8 reflective strips and all the necessary clips to use the gates
- Conforms: BS 8442:2015, Chapter 8, The Red Book, TSRGD, BS7818 Specification for pedestrian restraint systems, Chapter 8 & BSEN13422, The Red Book 2013, Chapter 8
- Colour: Yellow



H 1000mm x Extended Length 2250mm Collapsed Length 750mm

Portagate 3 Gate Compact Barrier

morethansafety

6021123

Portagate Compact Barrier Gate System
The Portagate is a blow moulded high density polyethylene barrier, supplied as a 3 or 4 gate system. Light and compact, the Portagate is designed to meet communications industry requirements and enables increased quantities per vehicle.

Features & Benefits:

- Configurations - Adjoining clips allow multi-positioning configurations to be formed such as a triangle, a square or a single line
- Firm hold - By sliding the top hinge clip down panels can be locked securely into formations
- Added stability - Designed to accept anti-trip feet for increase stability
- Temporary signage - Recesses are included for toggle mounted courtesy signs to enable the system to be fully closed with the signs still attached
- Reflective panels - Class R1 reflective panels which are 20% more reflective than standard lower grade reflective material conforming to BS 8442
- Stackable - Can be stacked in any 180° orientation to a height of 20 units for 4 gate systems and 25 for 3 gate systems
- Colour: Red



Barrier Gates: 3
Material: HDPE
EN Standards: BS 8442



TBC

Features & Benefits:

Photo ID Card.

Size: 2.12" x 3.38"

Thickness: 30mil

Please note: All mandatory fields must be complete to add this to your order. Only add 1 card at a time to an order to ensure details are correct

Assign To

Employee ID Number *

Employee Name *

Job Title *

Contract *

Expiry Date *

Photograph *

No file chosen

Compatible file extensions to upload: jpg

