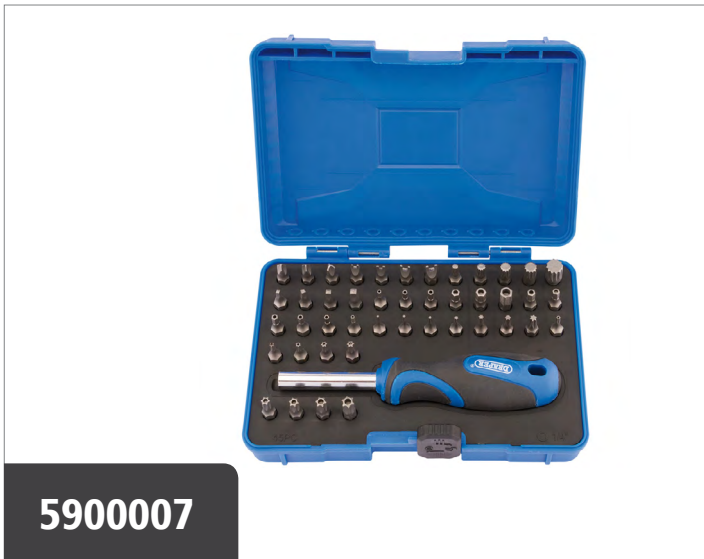




MECHANICAL TOOLKIT

CATALOGUE 2019



5900007

5900007

Security Screwdriver Bit and Driver Set (45 Piece)

25mm 1/4" bits manufactured from chrome vanadium steel, hardened and tempered with a shot blast finish. Supplied with a 1/4" soft grip driver. Supplied in a heavy duty storage case with plastic inlay to hold bits securely. Display packed. PZ TYPE products are compatible with *Pozi driv®/Supadriv® fixing systems. Draper TX-STAR products are compatible with †Torx fixing systems.

Contents:

- Magnetic soft grip driver
- 3 x Tri wing: 1, 2 and 3
- 4 x Spanner: 4, 6, 8 and 10
- 5 x Spline: M4, M5, M6, M8 and M10
- 4 x Square: S0, S1, S2 and S3
- 6 x Security hex (metric): 2, 2.5, 3, 4, 5 and 6mm
- 6 x Security hex (imperial): 5/32, 9/64, 1/8, 7/16, 3/32 and 5/64"
- 7 x Draper TX-STAR®: T5, T6, T7, T8, T10, T15 and T20
- 9 x Draper TX-STAR® security: T8T, T9T, T10T, T15T, T20T, T25T, T27T, T30T and T40T



5903301

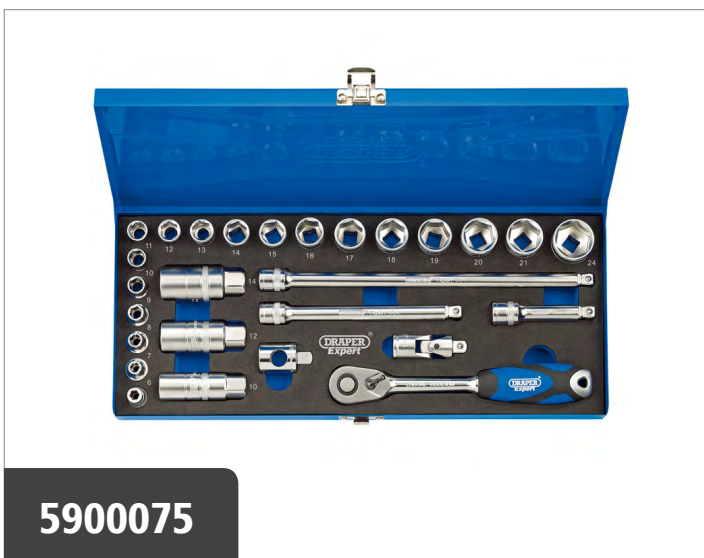
5903301

Metric Combination Spanner Set (11 Piece)

Generally in accordance with DIN3113 Specifications

Expert Quality, forged from chrome vanadium steel hardened, tempered and chrome plated for corrosion protection. Draper HI-TORQ® ring end offset at 15°. Jaw offset at 15°. Supplied in Tetron divided wallet with tie cord. Display packed.

Contents: 6, 7, 8, 9, 10, 11, 12, 13, 14, 17 and 19mm.



5900075

5900075

3/8" Sq. Dr. Metric Socket Set in Metal Case (27 Piece)

Manufactured and tested generally in accordance with DIN3122 and ISO3315 Specifications

Expert Quality, six point sockets made from chrome vanadium steel that's hardened and tempered with a micro satin finish. Supplied with a 72 tooth reversible soft grip ratchet and accessories. Each socket has a knurled ring for extra grip. Packed in a steel carrying case with EVA foam inserts.

Contents:

- 17 sockets size 6, 7, 8, 9, 10, 11, 12, 13, 14, 15, 16, 17, 18, 19, 20, 21, 24mm
- 3 spark plug sockets size 10, 12, 14mm
- 72 tooth reversible ratchet with soft grip handle and quick release button
- 3 wobble extension bars size 75, 150, 250mm
- *T' bar head 1/2" (F) x 3/8" (M) converter
- universal joint
- 3/8" sq dr x 1/4" hex adaptor. *T' bar head/converter when used with extension bar forms a sliding 'T' bar.

**5902389****5902389****Metric Hexagon and Ball End Hexagon Key Set (9 Piece)**

Hexagon keys with ball end on the long arm and conventional ends on short arm. The ball type hexagon tip allows the hexagon key to be used up to 30° angle from the screwhead recess. Manufactured from chrome vanadium steel that's hardened and tempered then applied with a chemically blacked finish. Supplied in fold-out easy release holder which can be wall-mounted.

Contents: 1.5, 2.0, 2.5, 3.0, 4.0, 5.0, 6.0, 8.0 and 10.0mm

**5902390****5902390****Imperial Hexagon and Ball End Hexagon Key Set (12 Piece)**

Hexagon keys with ball end on the long arm and conventional ends on short arm. The ball type hexagon tip allows the hexagon key to be used up to 30° angle from the screwhead recess. Manufactured from chrome vanadium steel that's hardened and tempered then applied with a chemically blacked finish. Supplied in fold-out easy release holder which can be wall-mounted.

Contents:

1/16, 5/64, 7/64, 9/64, 5/32, 1/8, 5/32, 3/16, 7/32, 1/4, 5/16 and 3/8".

**5905084****5905084****Master Utility Key**

Expert Quality, covers most technical locking systems. Four arm configuration with double keys on each arm. Comprises the following key profiles: three squares, three triangles, one circle with fins and one half moon. Supplied with key chain and belt clip. Display packed.



5211551

5211551

Compact Inspection Lamp with Rechargeable 2W COB LED (Green)

COB (Chip On Board) inspection lamp fitted with an additional 1W LED on the end plate transforming the lamp into torch. Powered by rechargeable Li-ion battery providing an impressive 150 Lumens and enhanced battery efficiency. The base is manufactured with integrated magnet with protective cover and swivel joint enabling the light to be used in any 360° position. Supplied with 240V charger and 12V charging adaptor. Display packed.



5210647

5210647

Cree and COB LED Head Lamp (3W)

Three function head lamp (100% white light / 50% white light / red light), fitted with a comfortable adjustable head strap with foam padding. Producing an ultra bright 220 lumen 80M beam of brilliant white light. The ON/OFF button is easily operated. Display packed.



5115122

5115122

Open Mouth Tool Bag (440mm)

Open mouth design tool bag with 13 internal and 6 external pockets for excellent organisation potential. Fitted with a padded shoulder strap and grip handle for added user comfort. The solid base keeps tools safe from damage and protects the bag from moisture and dirt. Made from 600 denier hardwearing fabric that's strong and durable.

Dimensions: 440 x 245 x 335mm



6202048

6202048

Technicians Toolbag

Technicians toolbag. Bag can be fully opened with zip, multiple pockets for hand tools, laptop and documents, plenty of room for additional equipment, suitable for all common laptops, tool side bag, can be removed and used separately.

Dimensions: 47 x 35 x 22cm.



59010705

59010705

Cross Slot No:2 x 38mm Soft Grip Screwdrivers

Expert Quality, SVCM blades which are hardened and satin chrome plated with sand blasted tips. Attached to a soft grip, oil and solvent resistant handle. Display packed.

Blade Length: 38mm Blade Tip: No:2



59010699

59010699

Plain Slot 6.5 x 38mm Soft Grip Screwdrivers

Expert Quality, SVCM blades which are hardened and satin chrome plated with sand blasted tips. Attached to a soft grip, oil and solvent resistant handle. Display packed.

Blade Length: 38mm Blade Tip: 6.5mm



59010732

59010732

'Pound Thru' Plain Slot 6.5 x 100mm Soft Grip Screwdrivers

Expert Quality, screwdrivers with hardened SVCM satin chrome plated hexagonal blades. Attached to a soft grip, oil and solvent resistant handle with integrated toughened 'Pound Thru' metal cap designed for receiving hammer blows. Display packed.

Blade Length: 100mm Blade Tip: 6.5mm



59010760

59010760

'Pound Thru' PZ Type No:2 x 100mm Soft Grip Screwdriver

PZ TYPE products are compatible with *Pozidriv®/Supadriv® fixing systems. Expert Quality, screwdrivers with hardened SVCM+ satin chrome plated hexagonal blades. Attached to a soft grip, oil and solvent resistant handle with integrated toughened 'Pound Thru' metal cap designed for receiving hammer blows. Display packed.

Blade Length: 100mm Blade Tip: No: 2



59010736

59010736

'Pound Thru' Plain Slot 10 x 250mm Soft Grip Screwdrivers

Expert Quality, screwdrivers with hardened SVCM satin chrome plated hexagonal blades. Attached to a soft grip, oil and solvent resistant handle with integrated toughened 'Pound Thru' metal cap designed for receiving hammer blows. Display packed.

Blade Length: 250mm Blade Tip: 10mm



5917280

5917280

'Pound Thru' PZ Type No: 2 x 250mm Soft Grip Screwdriver

PZ TYPE products are compatible with *Pozidriv®/Supadriv® fixing systems. Expert Quality, screwdrivers with hardened SVCM+ satin chrome plated hexagonal blades. Attached to a soft grip, oil and solvent resistant handle with integrated toughened 'Pound Thru' metal cap designed for receiving hammer blows. Display packed.

Blade Length: 250mm Blade Tip: No: 2

**5906097****5906097****150mm Soft Grip Crescent-Type Adjustable Wrench**

Expert Quality, crescent-type wrenches manufactured from chrome vanadium steel hardened and tempered with a black oxide finish. Soft grip handles for comfort with metric scale on fixed jaw. Display packed.

Capacity: 19mm

Length: 150mm

**5905979****5905979****250mm Soft Grip Crescent-Type Wrench**

Expert Quality, crescent-type wrenches manufactured from chrome vanadium steel hardened and tempered with a black oxide finish. Soft grip handles for comfort with metric scale on fixed jaw. Display packed.

Capacity: 30mm

Length: 250mm

**5903464****5903464****Curved Jaw Self Grip Pliers (220mm)**

Jaws manufactured from good quality steel hardened and tempered. Serrated gripping surfaces and adjustable opening, with quick-release lever. Display packed.

Length: 220mm



5904389

5904389

200mm VDE Long Nose Pliers

Manufactured to DIN Standard and individually certified to EN 60900

Expert Quality, drop forged from chrome vanadium steel correctly hardened and tempered with additionally induction hardened cutting edges. Each plier has been tested to 10,000V for safe 1000V AC or 1500V DC live line working. Lacquered finish for corrosion protection with heavy duty, fully insulated, soft grip handles with slip guards. Display packed. Length: 200mm Cut Hard Wire Dia. 1.6mm Cut Med/Hard Wire Dia. 3.6mm



5904396

5904396

250mm VDE Waterpump Pliers

Manufactured to DIN Standard and individually certified to EN 60900

Expert Quality, drop forged from chrome vanadium steel correctly hardened and tempered. Each plier has been tested to 10,000V for safe 1000V AC or 1500V DC live line working. Lacquered finish for corrosion protection with heavy duty, fully insulated, soft grip handle. Has 'no-nip' feature which prevents handles locking together when at largest capacity and damaging users' hands. Display packed. Capacity: 38mm



5904385

5904385

180mm VDE Combination Pliers

Manufactured to DIN Standard and individually certified to EN 60900

Expert Quality, drop forged from chrome vanadium steel correctly hardened and tempered with additionally induction hardened cutting edges. Each plier has been tested to 10,000V for safe 1000V AC or 1500V DC live line working. Lacquered finish for corrosion protection with heavy duty, fully insulated, soft grip handles with slip guards. Display packed. Length: 180mm Cut Hard Wire Dia. 2.0mm Cut Med/Hard Wire Dia. 3.4mm



5904391

5904391

160mm VDE Diagonal Side Cutter

Manufactured to DIN Standard and individually certified to EN 60900

Expert Quality, drop forged from chrome vanadium steel correctly hardened and tempered with additionally induction hardened cutting edges. Each plier has been tested to 10,000V for safe 1000V AC or 1500V DC live line working. Lacquered finish for corrosion protection with heavy duty, fully insulated, soft grip handles with slip guards. Display packed. Cut Soft Wire Dia. 4.0mm Length: 160mm Cut Hard Wire Dia. Dia. 1.8mm Cut Med/Hard Wire Dia. 2.8mm



5950509

5950509
150mm / 6" Steel Rule

Double sided with hang hole. Permanently etched graduations of cm/mm and inches, 1/8", 1/16", 1/32" and 1/64". Display packed.

Length: 150mm/6"
Width: 19mm



5904258

5904258
450g (16oz) Fibreglass Shafted Ball Pein Hammer

Expert Quality, polished face solid forged head from fine grain high carbon steel correctly hardened and tempered with a lacquer coating for rust protection. Solid fibreglass core shaft fitted with shock absorbing PP/TPR grip. Sold Loose.

Weight: 450g (16oz)



5930206

5930206
Gasket Scraper

Manufactured from carbon steel hardened, tempered and satin chrome finish with shot blast scraper end. For cleaning cylinder heads, removing old sealants and carbon, etc. Display packed.



5950237

5950237
355mm Pry Bar / Nail Puller

Flat section with nail puller and chisel ends 35mm wide. Forged from good quality carbon steel hardened, tempered and painted black. Sold loose.

Size: 150mm
Type: Half Round



5917737

5917737
150mm Hand File and Handle

High carbon steel, hardened and tempered with soft grip handles incorporating hang hole. Improved tooth profile for increased performance.

Size: 150mm
Type: Hand



5917738

5917738
150mm Half Round File and Handle

High carbon steel, hardened and tempered with soft grip handles incorporating hang hole. Improved tooth profile for increased performance.

Size: 150mm
Type: Half Round

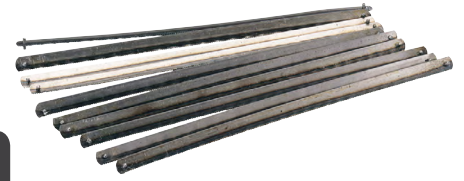


6800139

6800139
10 x 300mm 24TPI B-Metal Hacksaw Blades
Conforms to BS 1919

Expert Quality, saw edge, manufactured from high speed steel strip, electron beam welded to high quality carbon steel backing. Display packed ten blades per card.

Pitch: 24



6800419

6800419
10 x Junior Hacksaw Blades
Manufactured to BS6271

Expert Quality, general purpose cutting blades with pinned ends. Will fit all junior hacksaw frames. Packed ten blades on display card or in bags of 100 blades.



5900114

5900114
Soft Grip Hacksaw (300mm)

Expert Quality, ergonomic pattern aluminium frame with a soft grip handle for user comfort. Frame has two sets of blade spigots which allows straight or 45° cutting. Supplied with a 300mm bi-metal blade.



6800314

6800314
150mm Junior Hacksaw with Blade

Plated steel frame with finger guard. Supplied with blade. Display packed.



5901238

5901238
Soft Grip Trimming Knife with 'Safe Blade Retractor' Feature

Expert Quality, retractable pattern with special blade feature allows blade to retract automatically when surface contact is lost even when thumb pressure is maintained. Diecast zinc alloy body with anti-slip soft grip handle for user comfort. Supplied with five spare blades. Display packed.

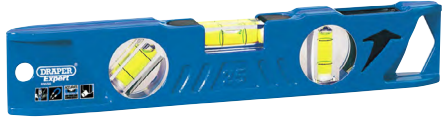


5904265

5904265
Card of 5 Hooked Trimming Knife Blades

Reversible polished steel blades with accurately ground cutting edges.

Type: 2 notch (hooked)



5950619

5950619
Side View Boat Spirit Level with Magnetic Base (250mm)

Expert Quality, with side view vial. Cast aluminium with three solid acrylic vials, one horizontal, one 45° and vertical side view vial. Special milled base with two rare earth magnets. Accuracy: 0.5mm per 1M = 0.029° in standard position. Display packed.



5916631

5916631
Measuring Tape (5m / 16ft x 25mm)
Manufactured to EC Class II Accuracy

Expert Quality, tough impact resistant ABS case. Hold and measure button allows user to lock tape for accurate measurements. Power return nylon-coated tape has metric and imperial graduations. Fitted with a belt clip for added user portability.

Length: 5m / 16ft

Width: 25mm



5300702

5300702
4 Heavy Duty AA-Size Alkaline Batteries
4 Heavy Duty AA-Size Alkaline Batteries



5300703

5300703
4 Heavy Duty AAA-Size Alkaline Batteries
4 Heavy Duty AAA-Size Alkaline Batteries



5917739

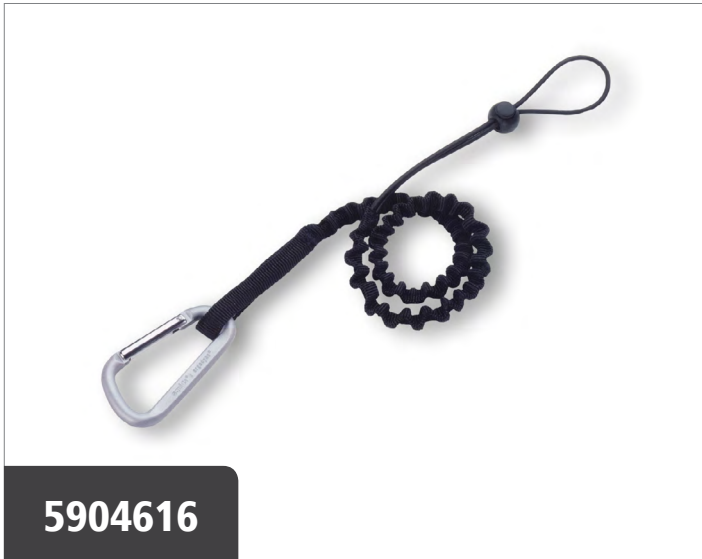
5917739
Magnetic Parts Bowl
150mm diameter, stainless steel, magnetic parts bowl. Manufactured from high grade steel and fitted with a strong magnet on the base.



7200134

7200134
Stainless Steel Fill Brush (230mm)
Plastic handle. For aggressive cleaning and removal tasks. Display packed.

Wires per row: 3 x 11

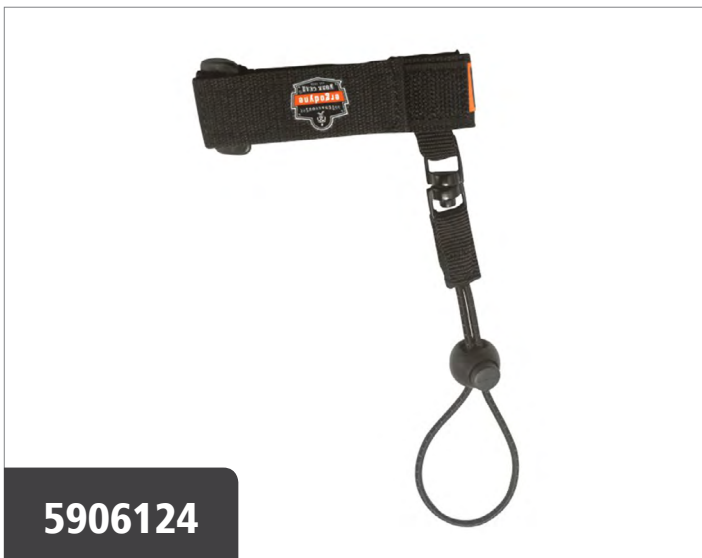


5904616

Tool Lanyard Single Carabiner

Durable 1680D shock absorbing poly webbing. Aluminium alloy carabiner with captive eye. Treaded loop end that grips the tool when attached. Low-profile lightweight design reduces snag hazards.

Size: Standard 35" - 42" (89 -110cm)



5906124

Wrist Tool Lanyard

Polyester webbing cuff secures to wrist. Energy-absorbing ribbed pull cord. Adjustable barrel lock for tool attachment. Short length improves the drop clearance needed.

Wrist Measurement S/M 5" - 7" (13cm - 18cm).

Wrist Measurement L/XL 7" - 8½" (18cm - 22cm).

Sizes Available: SM - LXL



5921001

Ergo Plus® Slimline VDE Approved Fully Insulated Screwdrivers (6 Piece)

Manufactured and individually certified to EN 60900

Expert Quality, with an insulated sheath the same diameter as the blade, enabling the tip access to deep seated screws found in terminals and switch boards. Tested to 10kV, suitable for working on live circuits of 1kV AC and 1.5kV DC. SCVM steel blades hardened, tempered and chemically blackened. Display packed.

PZ TYPE products are compatible with *Pozidriv®/Supadriv® fixing systems. *Pozidriv®/Supadriv® are registered trademarks of Trifast Plc.

Contents: 3 plain slot sizes: 3.5 x 100, 4.0 x 100, 5.5 x 125mm

1 cross slot sizes: No.2 x 100mm

2 PZ TYPE: No1 x 80mm and No. 2 x 100mm