



CBRE
ELECTRICAL TOOLKIT
2019



5916635

5916635

Storm Force® 10.8V Cordless Hammer Drill with LI-ION Battery

- Fitted with a 25Nm variable speed motor
- 21 torque control positions
- 3 functions; drill, hammer drill and screwdriver
- Attached with a 10mm keyless chuck, super bright LED worklight, metal belt clip and a battery level indicator
- Supplied with a 10.8V 1.5Ah lithium battery and a 1 hour charger

Drilling capacities: Wood: 25mm Masonry: 10mm Mild steel: 10mm

Speed (no load): 0-400 and 0-1300r/min

Max. torque: 25Nm

Weight (machine and battery): 1kg



5916634

5916634 Slimline COB LED Rechargeable Magnetic Inspection Lamps (5W) Colour: Green

5W inspection lamp fitted with an additional SMD LED's on the end transforming the lamp into torch. The 3 cycle switch allows half/full/ torch features. Powered by a rechargeable Li-ion battery providing an impressive 450 lumens inspection light and a 250 lumen torch. The base is manufactured with an integrated magnet with protective cover and pivoting head enabling the light to be used in any 360° position. Supplied with micro USB to standard USB cable and 3 pin approved USB charger. Battery: 3.7V Li-ion Battery.

Burn Time: 4.5 hrs Charging Time: 4 hrs IP Rating: IPX4



5906039

5906039

Metric Combined HSS and Masonry Drill Bit Set (17 Piece)

12 titanium nitride coated high speed steel straight shank drills and five tungsten steel masonry drills in handy set. Display packed in soft grip plastic case. Contents: 12 titanium nitride coated HSS drills: 1.5, 2.0, 2.5, 3.0, 3.2, 3.5, 4.0, 4.5, 4.8, 5.0, 5.5 and 6.0mm: 5 masonry drills: 3.0, 5.0, 6.0, 8.0 and 10mm



5916633

5916633

Junior Hacksaw

Expert Quality, 150mm junior hacksaw made with a steel frame with an soft grip plastic handle. Supplied with blade.



6800419

6800419

10 x Junior Hacksaw Blades

Manufactured to BS6271

Expert Quality, general purpose cutting blades with pinned ends. Will fit all junior hacksaw frames. Packed ten blades on display card or in bags of 100 blades.



5902377

5902377

'Pound Thru' Screwdriver Set (6 Piece)

Expert Quality, hexagonal section SVCM steel blades hardened, tempered and satin chrome plated finish with sand blasted tips. Handles are 'soft grip' polymer vulcanized with rooted cap allowing handle to be struck without causing damage. Colour coded handles for easy recognition. Display packed.

PZ TYPE products are compatible with

*Pozidriv®/Supadriv® fixing systems.

*Pozidriv®/Supadriv® are registered trademarks of Trifast Plc.

Contents:

- 2 plain slot size: 6 x 100 and 8 x 150mm
- 2 cross slot: No.2 and 3
- PZ TYPE: No.2 and 3



5920194

5920194

Ergo Plus® Interchangeable VDE Torque Screwdriver Set (19 Piece)

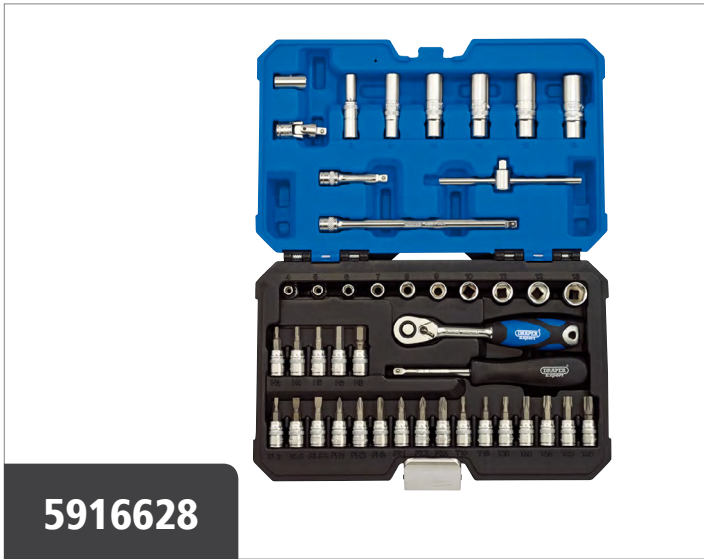
Manufactured and individually certified to EN 60900

Expert Quality, interchangeable VDE torque screwdriver, intended for electrical applications. Perfect for torque-controlled tightening of screws, which helps avoid damaging screws and tools whilst ensuring a safe and secure screw connection. The adjustment scope for the torque screwdriver is 1.0 – 5.0 Nm (accuracy +/- 6%). Individually tested to 10,000V and fully compliant to EN60900:2012 standards, permitting use on AC circuits up to 1000V and DC circuits up to 1500V. Suitable for attaching to all existing Draper Expert 965 interchangeable range screwdrivers. The VDE interchangeable blades are made from SVCM steel for added strength and deliver a fast and easy press in auto-lock action with a simple release method. Supplied complete with calibration certificate, a selection of blades suiting all popular applications and a convenient canvas roll for secure transportation and storage. Display packed.

PZ TYPE products are compatible with *Pozidriv®/Supadriv® fixing systems.

Contents:

- 1 Insulated torque screwdriver
- 1 Insulated Holder Driver
- 1 Precision Insulated Holder Driver
- 4 plain slot size: 3 x 60, 4.0 x 80, 5.5 x 80 and 6.5 x 100mm
- 3 cross slot sizes: No.0 x 60, No.1 x 80 and No.2 x 100mm
- 3 PZ TYPE sizes: No.0 x 60mm, No.1 x 80 and No.2 x 100mm
- 4 Draper TX-STAR®: T10, T15, T20, T25 x 100mm
- 2 PZ/SL: No.1 x 80 and No.2 x 100mm



5916628

5916628

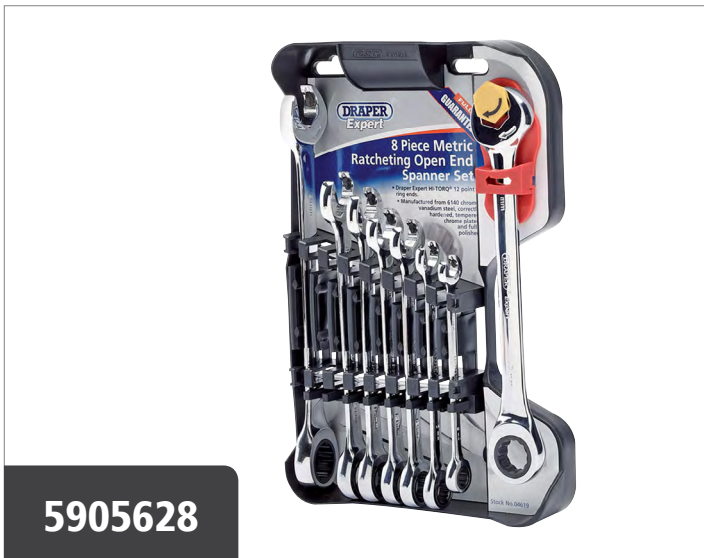
1/4" Sq. Dr. Metric Socket Set (44 Piece)

Manufactured and tested generally in accordance with DIN3122 and ISO3315 Specifications

Six point sockets made from chrome vanadium steel that's hardened and tempered with a micro satin finish. Each socket has a knurled ring for extra grip. Supplied with a 72 tooth reversible soft grip ratchet and accessories. Packed in tough plastic storage case.

Contents:

- 10 sockets sizes 4, 5, 6, 7, 8, 9, 10, 11, 12, 13mm
- 6 deep sockets sizes 6, 8, 10, 11, 12, 13mm
- 72 tooth reversible ratchet with soft grip handle and quick release button
- spinner handle
- 2 wobble extension bars 50 and 150mm
- sliding T bar
- universal joint
- 1/4" Sq. Dr to 1/4" hex bit adaptor
- 3 x plain slot socket bits 3, 5, 5.5mm
- 3 x PZ Type socket bits #1, 2, 3
- 3 x cross slot socket bits #1, 2, 3
- 5 x hex socket bits 3, 4, 5, 6, 8mm
- 7 x Draper TX-STAR® socket bits T10, T15, T20, T30, T35, T40, T45



5905628

5905628

Hi Torq® Metric Double Ratcheting Combination Spanner

Expert Quality, unique ratcheting open-end design. Draper Expert HI-TORQ® ratchet ring end requiring only 5° movement to turn fastener. Both ratcheting facilities are especially useful in confined spaces. Forged from chrome vanadium steel, hardened, tempered, chrome plated and fully polished throughout. Display packed.

Contents: 8, 10, 12, 13, 14, 15, 17 and 19mm



5901112

5901112

Security Bit Set (33 Piece)

25mm 1/4" bits manufactured from chrome vanadium steel, hardened and tempered with a shot blast finish. Bit holder manufactured from zinc alloy steel with a chrome plated finish. Supplied in a storage case. Display packed.

Draper TX-STAR products are compatible with †Torx fixing systems.

Contents:

- Magnetic bit holder
- 3 x Torq bits: 6, 8 and 10
- 4 x spanner bits: No. 4, 6, 8 and 10
- 4 x tri-winged bits: No.1, 2, 3 and 4
- 6 x metric hexagonal security bits: 2, 2.5, 3, 4, 5 and 6mm
- 6 x imperial hexagonal security bits: 5/64, 3/32, 7/64, 1/8, 9/64, and 5/32"
- 9 Draper TX-STAR® security: T8T, T10T, T15T, T20T, T25T, T27T, T30T, T35T and T40T

5916631**5916631****Measuring Tape (5m / 16ft x 25mm)****Manufactured to EC Class II Accuracy**

Expert Quality, tough impact resistant ABS case. Hold and measure button allows user to lock tape for accurate measurements. Power return nylon-coated tape has metric and imperial graduations. Fitted with a belt clip for added user portability.

Length: 5m / 16ft

Width: 25mm

5210647**5210647****Cree and COB LED Head Lamp (3W) (3 x AAA Batteries)**

Three function head lamp (100% white light / 50% white light / red light), fitted with a comfortable adjustable head strap with foam padding. Producing an ultra bright 220 lumen 80M beam of brilliant white light. The ON/OFF button is easily operated. Supplied with 3 x AAA batteries. Display packed.

5904925**5904925****Professional Utility Key**

Expert Quality, with two square, one triangle and one stepped key profile plus a double-ended 7mm plain/No.2 cross slot insert bit 40mm long. Holder included for 1/4" insert bit. Display packed.

6201944**6201944****Magnetic Parts Bowl**

For storage of nuts, bolts, screws, etc. whilst working. Bowl has rubber covered magnetic base for affixing to metal objects such as tool boxes etc. Magnetism transfers to inner surface of bowl to retain small metal parts, nuts, bolts, etc. Sold loose.

Diameter: 145mm

5300703**5300703****4 Heavy Duty AAA-Size Alkaline Batteries**

4 Heavy Duty AAA-Size Alkaline Batteries

5901238**5901238****Soft Grip Trimming Knife with 'Safe Blade Retractor' Feature**

Expert Quality, retractable pattern with special blade feature allows blade to retract automatically when surface contact is lost even when thumb pressure is maintained. Diecast zinc alloy body with anti-slip soft grip handle for user comfort. Supplied with five spare blades. Display packed.

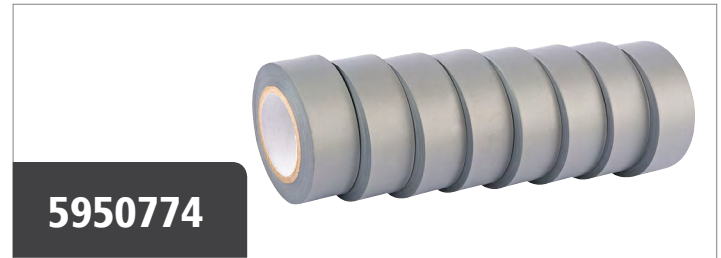


5950134

8 x 10m x 19mm Black Insulation Tape to BSEN60454 / Type 2

Manufactured to EN60454 / Type2 Specifications

Expert Quality, PVC self-extinguishing flame resistant tape manufactured under strict quality control. Security wrapped eight rolls per pack.



5950774

8 x 10m x 19mm Grey Insulation Tape to BSEN60454 / Type 2

Manufactured to EN60454 / Type2 Specifications

Expert Quality, PVC self-extinguishing flame resistant tape manufactured under strict quality control. Grey tape compatible with BS7671:2001 Harmonised Cabling. Security wrapped eight rolls per pack.



5950139

8 x 10m x 19mm Blue Insulation Tape to BSEN60454 / Type 2

Manufactured to EN60454 / Type2 Specifications

Expert Quality, PVC self-extinguishing flame resistant tape manufactured under strict quality control. Security wrapped eight rolls per pack.



5950775

8 x 10m x 19mm Brown Insulation Tape to BSEN60454 / Type 2

Manufactured to EN60454 / Type2 Specifications

Expert Quality, PVC self-extinguishing flame resistant tape manufactured under strict quality control. Brown tape compatible with BS7671:2001 Harmonised Cabling. Security wrapped eight rolls per pack.



5950137

8 x 10m x 19mm Yellow Insulation Tape to BSEN60454 / Type 2

Manufactured to EN60454 / Type2 Specifications

Expert Quality, PVC self-extinguishing flame resistant tape manufactured under strict quality control. Security wrapped eight rolls per pack.



5650568

Insulation Earth Colour Tape

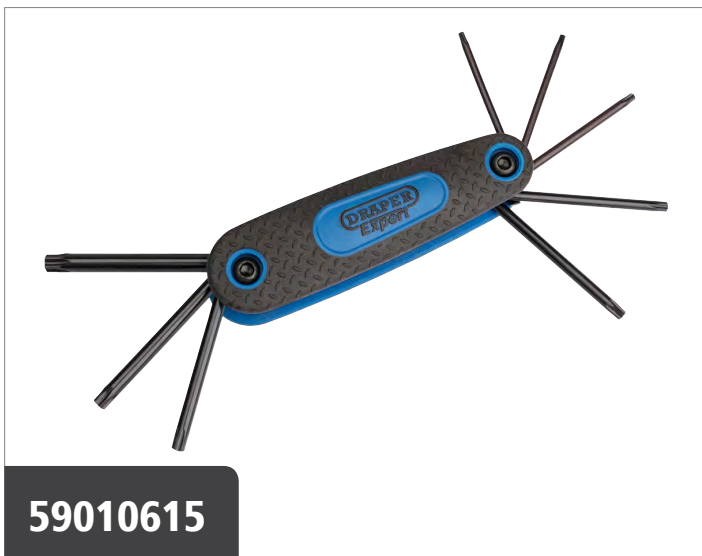
Manufactured to EN 60454 Specifications

Expert Quality Self-adhesive PVC earth colour tape. Shrink wrapped and sold loose.

**5900506****5900506****Ball End Metric Hexagon Key Set (8 Piece)**

Manufactured from chrome vanadium steel that's hardened and tempered. The ball end tip allows the hexagon key to be used up to 30° angle from the screwhead recess. Fitted in pocket-size plastic storage holder with non-slip grip. Display packed.

Contents: 1.5, 2.0, 2.5, 3.0, 4.0, 5.0, 6.0 and 8.0mm.

**59010615****59010615****Draper TX-Star® Key Set (8 Piece)**

Draper TX-STAR® products are compatible with †Torx fixing systems

Expert Quality, manufactured from chrome vanadium steel hardened and tempered. Held in pocket-size plastic storage holder with non-slip grip. Display packed.

†Torx is the registered trademark of Acument Intellectual Properties LLC.

Contents: T9, T10, T15, T20, T25, T27, T30 and T40

**5902390****5902390****Imperial Hexagon and Ball End Hexagon Key Set (12 Piece)**

Hexagon keys with ball end on the long arm and conventional ends on short arm. The ball type hexagon tip allows the hexagon key to be used up to 30° angle from the screwhead recess. Manufactured from chrome vanadium steel that's hardened and tempered then applied with a chemically blacked finish. Supplied in fold-out easy release holder which can be wall-mounted.

Contents:

1/16, 5/64, 7/64, 9/64, 5/32, 1/8, 5/32, 3/16, 7/32, 1/4, 5/16 and 3/8".



5904257

5904257

560g (20oz) Fibreglass Shafted Claw Hammer

Expert Quality, polished face solid forged head from fine grain high carbon steel correctly hardened and tempered with a lacquer coating for rust protection. Solid fibreglass core shaft fitted with shock absorbing PP/TPR grip. Sold Loose.

Weight: 560g (20oz)



5900069

5900069

Opti-Vision™ Torpedo Level with Magnetic Base (250mm)

Expert Quality, heavy duty cast aluminium level torpedo level with highly visible horizontal 'Opti-Vision' solid acrylic UV resistant vial set into the angles surface, one solid acrylic vertical vial and one angle finder solid acrylic vial all set within tough red housings for maximum visibility. Electrostatically epoxy powder coated and baked for maximum protection, shock absorbing end caps. The base has a finely milled surface, a V-groove for levelling pipework and two inset rare earth magnets. Accuracy 0.5mm per 1M = 0.029° in standard position.



5903951

5903951

300mm Crescent-Type Adjustable Wrench with Phosphate Finish

Expert Quality, crescent-type wrenches manufactured from chrome vanadium steel hardened and tempered with black phosphate finish, polished profile and jaws. Jaws offset at 22°. The 150, 200, 250 and 300mm sizes have a graduated scale on the fixed jaws. Suitable for use in areas where chemicals and chrome plate can give off poisonous fumes. Display packed.

Capacity: 38mm Length: 300mm



5903948

5903948

150mm Crescent-Type Adjustable Wrench with Phosphate Finish

Expert Quality, crescent-type wrenches manufactured from chrome vanadium steel hardened and tempered with black phosphate finish, polished profile and jaws. Jaws offset at 22°. The 150, 200, 250 and 300mm sizes have a graduated scale on the fixed jaws. Suitable for use in areas where chemicals and chrome plate can give off poisonous fumes. Display packed.

Capacity: 24mm Length: 150mm

**59010851****200mm Ergo Plus® Fully Insulated VDE Slimline Long Nose Pliers**

Manufactured to DIN Standard and individually certified to EN 60900

Expert Quality, special steel hardened and tempered with cutting edges separately induction hardened. Ergonomic handle provides improved performance while each plier is individually tested to 10,000V for safe 1000V AC or 1500V DC live line working. Display packed.

Cut Hard Wire Dia. 1.8mm
Cut Med / Hard Wire Dia. 2.8mm
Length: 200mm

**5900538****200mm Ergo Plus® Fully Insulated High Leverage VDE Combination Pliers**

Manufactured to DIN Standard and individually certified to EN 60900

Expert Quality, special steel hardened and tempered with cutting edges separately induction hardened. Ergonomic handle provides improved performance while each plier is individually tested to 10,000V for safe 1000V AC or 1500V DC live line working. Display packed.

Cut Hard Wire Dia. 2.7mm
Cut Piano Wire: 2.3mm

**59010856****200mm Ergo Plus® Fully Insulated High Leverage VDE Diagonal Side Cutters**

Manufactured to DIN Standard and individually certified to EN 60900

Expert Quality, special steel hardened and tempered with cutting edges separately induction hardened. Ergonomic handle provides improved performance while each plier is individually tested to 10,000V for safe 1000V AC or 1500V DC live line working. Display packed.

Cut Hard Wire Dia. 3.0mm
Cut Med/Hard Wire Dia. 4.2mm
Cut Piano Wire. 2.5mm
Length: 200mm

**59010858****250mm Ergo Plus® Fully Insulated VDE Waterpump Pliers**

Manufactured to DIN Standard and individually certified to EN 60900

Expert Quality, special steel hardened and tempered with cutting edges separately induction hardened. Ergonomic handle provides improved performance while each plier is individually tested to 10,000V for safe 1000V AC or 1500V DC live line working. Display packed.

**5906091****220mm Ergo Plus® Fully Insulated Cable Cutter**
Manufactured to DIN Standard and individually certified to EN 60900

Expert Quality, special steel hardened and tempered. Ergonomic angled head and handles provides greater work area viewing and improved performance. High leverage joint provides 30% more cutting power and integrated opening spring avoids fatigue when in constant use. Ideal for cutting 16mm² and 10mm² earth cable; 6mm² and 10mm² twin and earth cable and 25mm² meter tails (connecting into consumer unit). Display packed.

Cut Cu/Al Cable: 25mm - 85mm²
Length: 220mm



5904616

5904616

Tool Lanyard Single Carabiner

Durable 1680D shock absorbing poly webbing. Aluminium alloy carabiner with captive eye. Treaded loop end that grips the tool when attached. Low-profile lightweight design reduces snag hazards.

Size: Standard 35" - 42" (89 -110cm)



5906124

5906124

Wrist Tool Lanyard

Polyester webbing cuff secures to wrist. Energy-absorbing ribbed pull cord. Adjustable barrel lock for tool attachment. Short length improves the drop clearance needed.

Wrist Measurement S/M 5" - 7" (13cm - 18cm).

Wrist Measurement L/XL 7" - 8½" (18cm - 22cm).

Sizes Available: SM - LXL



5551217

5551217

Socket Tester

Checks correct socket outlet wiring. Checks the quality of the earthing that is essential for safe installations. Checks for the polarity of the mains supply. Checks RCDs with measured current. Bright LEDs. Easy to use - anything other than green needs checking out.

**6202049****6202049****CBRE Technicians Toolbag**

CBRE branded technicians toolbag. Bag can be fully opened with zip, multiple pockets for hand tools, laptop and documents, plenty of room for additional equipment, suitable for all common laptops, tool side bag, can be removed and used separately.

Dimensions: 47 x 35 x 22cm.

**9206544****9206544****CBRE A-Frame Sign Kit with Interchangeable Signs**

CBRE branded A-frame sign supplied with 10 interchangeable signs in a storage case.

Size of fold flat sign: 61cm x 29cm



5906215

5906215

SoftFinish® Electric Slim Fix Screwdriver Set

The professional screwdriver for dry applications.

Noticeable Ergonomics. The foundation for the Wiha SoftFinish® screwdriver line was developed as part of a scientific study. As a professional tool with four handle sizes designed with its applications in mind, the unique design ideally combines the functions “quick turning: dynamic” and “maximum torque transmission: power”.

SoftFinish® zone. Soft, torque-supporting finish zone for dry applications. **Blade anchoring.** Reliable anti-twist connection between blade and handle. **VDE insulation.** Protective insulation spray-coated directly onto the blade, through-hardened blade. **Water bath.** Piece test according to IEC 60900 in a water bath at 10,000 V for verified safe use at 1000 V AC or 1500 V DC.



5551284

5551284

1000A Ultra Slim Clamp Meter

Ultra slim and lightweight 1000A clamp with 0.01A resolution

Key Benefits

Slim, lightweight high capacity clamp meter from the world leaders in clamps.

DMM functionality

G7 test leads

Key Features

10mm Jaw thickness

Tear drop jaw shape for easy access in to distribution boards

1000A Current measurement

0.01 A resolution

AC Voltage measurement up to 600V

1mV Resolution ACV

DC Voltage measurement up to 600V

0.1mV Resolution DCV

Resistance measurement

Continuity buzzer

Fuseless electronic protection on up continuity up to 600V

Comes with popular G7 test leads

Includes carry case with belt loop

Safety: IEC 61010-1 CAT.III 600V Pollution degree 2 (AC A), CAT.III 300V / CAT.II 600V Pollution degree 2 (AC/DC V)

IEC 61010-031, IEC 61010-2-032, IEC 61326 (EMC)

Included:

Test leads

Carry pouch with belt loop

Batteries

Manual



6302278

6302278 CBRE Fire Door Gap Gauge Kit



Item: Pouch

SKU: 6302000

Position: N/A



Item: Fire Door Gap Gauge

SKU: 6302277

Position: N/A



Item: Fire Door Check Cards

SKU: 6302001

Position: N/A



5551188

5551188
2 Pole LED Voltage Tester

Key Benefits

- Clear oversize luminous LEDs shine through voltage level
- Clear audible tone
- UK Specific GS38 Slender probe tips NO NEED to swap ends
- Bright torch light - gives ample illumination
- Fits into recessed terminals such as RCBOs without unscrewing any caps
- Phase Rotation - Bright green LEDs show left or right rotation.

Indicates actual voltage if no batteries fitted

- Two pole testers that use batteries should indicate a live circuit if the batteries die or have not been inserted into the tester.
- This is normally indicated by a single LED but this does not indicate the actual voltage present.
- The KT1780 & KT1790 have a separate circuit so they operate with no batteries or dead batteries and still indicate the actual voltage present.

Key Features

- AC & DC Voltage tests up to 690V
- Clear Oversize luminous LED indication
- Soft to touch overmoulded rubber body
- Continuity Test
- Self diagnostic test
- Single Pole phase test
- Phase Rotation test
- Polarity indication
- Auto power on/off
- IP65 rating protects against Dust & Water ingress
- Designed to the new international safety standards IEC 61243-3 & IEC 61010-1
- Cat IV 600V

Included: Built in test leads, Batteries
Instruction manual with Certificate of Conformity

Weights & Dimensions: Boxed Weight: 242g
Boxed Dimensions: 300(H)mm x 40(H)mm x 70(D)mm



5551215

5551215
Proving Unit

50-690 V proving unit with just two terminals to test AC and DC voltage detectors. Fast response and works with low impedance voltage testers. Ramps down through voltage levels. LED indication of functioning unit.

To ensure the safety of personnel working on electrical circuits BEST PRACTICE for the use of a proving unit before working on dead circuits.

Output voltage: 180V in to 6.8 Ω , 720V - 820V in to 10M Ω
Operating conditions: -10 to 40 C, 70% RH
Dimensions: W65 x H120 x D45mm



5551377

5551377

Kitbag 3 for 2 Pole LED Voltage Tester

Carrying case for 2 Pole LED Voltage Tester. Branded zip kit bag with clear window. Case has 2 holes in proving unit storage section for testing without removal. Item CBRE branded.

Dimensions: Length 31cm Width: 13cm Depth: 9cm

Material - cloth with carrying strap



5551233 & 5551617

5551233

**Kewstick DUO (Non-Contact Voltage Detector)
ITEM USED FOR INDICATION ONLY**

Unique dual sensitive non-contact voltage detector - just press and hold the desensitising button and you can differentiate between live and earthed cables approximately 10mm apart.

Key Benefits:

- Dual sensitivity
- Heartbeat - green LED indicates that the unit is on and working correctly
- Red LED indicates presence of voltage
- Audible tone also indicates the presence of voltage

Key Features:

- Clearly detects 90 - 600 volts AC without metal contact
- Two colour LEDs - Green for correct working and Red for Voltage detection
- Two tone buzzer, one for correct working and one for voltage detection
- Pocket-size for handy use anywhere
- Low power consumption circuits means long life batteries
- Cat IV rated
- 2 year unconditional guarantee (excluding batteries)

5551617

Non Contact Proving Unit

Portable proving unit for use on / off site that instantly proves the function of non-contact voltage testers before and after use.

Simple to use, just press the button and tests.

Belt clip for hands-free use.

Visual LED indication of function.

Robust and drop-proof from 1 metre.

Comes installed with a 9V battery.



1301136

Yale Spectacles Clear

Ultra lightweight, wrap around design, contoured shape, polycarbonate lens (PC lens), soft nose bridge, non slip coloured rubber tips

Conform to EN166:

- Optical Class:1
- F - (Low impact energy)
- 2C-1.2 - UV Filter

Cat 2 - Intermediate Risk



1751238

Arc Flash Glove 8.2 Cal

18-gauge flame-resistant arc flash glove with neoprene palm. 1125 Grams of Cut protection. World's first 18g Arc Flash Glove. 18g Kevlar® composite filament fiber shell of protection. Arc-flash tested for level 2, rated ATPV = 8.2 cal/cm2. Flame-resistant neoprene palm coating for better grip. Touchscreen compatible.

Sizes: 5 - 11 Applications: Petro Chemical, Utilities, Oil and Gas