



# Corporate Clothing Guide

# Contents

- Women's Polos
- Women's Blouses
- Women's Waistcoats
- Women's Knitwear
- Women's Jackets
- Women's Trousers
- Women's Skirts
- Women's Dresses
- Men's Shirts
- Men's Polos
- Men's Knitwear
- Men's Waistcoats
- Men's Jackets
- Accessories

morethansafety

# WOMEN'S PREMIUM COTTON POLOS

## Arlington polo

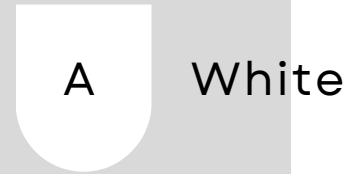
Women's Short Sleeve Polo



**Sizes:**  
XS 4-6  
S 8  
M 10-12  
L 14  
XL 16-18  
2XL 20  
3XL 22 -24

- 4 button placket
- ribbed short sleeve cuff
- 2 side splits
- tailored fit
- cotton rich high stretch

Available Colours:



White



Navy



Grey Marl



Black



Sky Marl



A

B

C

D

E



### After care



Breathable Fabric



Durability



High Level Of Stretch



Feeling Fresh



Midweight Fabric



Easy Care



95% Cotton  
5% Elastane

**morethansafety**

# WOMEN'S PREMIUM COTTON POLOS

## Anna polo

Women's Long Sleeve  
Polo

### Sizes:

XS 4-6

S 8

M 10-12

L 14

XL 16-18

2XL 20

3XL 22 -24



### After care



Breathable  
Fabric



Durability



High Level  
Of Stretch



Feeling Fresh



230gsm  
Midweight  
Fabric



Easy Care



95% Cotton  
5% Elastane



4 button placket

Tailored fit

Ribbed long sleeve cuff

2 side splits

Cotton rich high stretch

### Available Colours:



Navy



Grey Marl



White



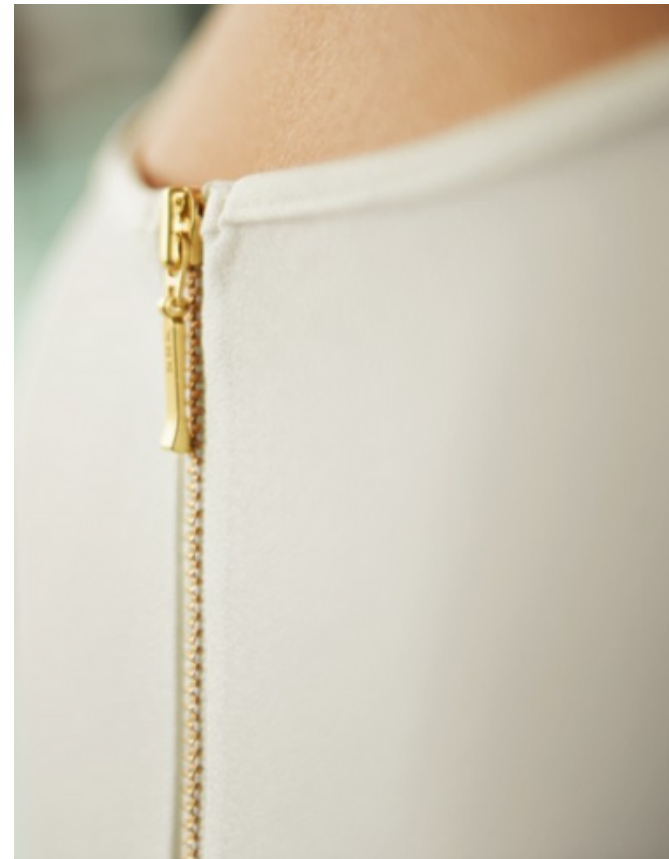
Sky Marl



Black

# Riola crepe de chine Blouse

Long Sleeve  
Women's Blouse



**Sizes:**  
6-30 regular

- Round neck
- Front pleat detail
- Bust dart
- Single gold button cuff
- Rear gold zip detail
- 94% Polyester, 6% Elastane



Easy Care

● Available Colours:



Cream



White



# Felina crepe de chine Blouse

Short Sleeve  
Women's Blouse



- Round neck
- Front pleat detail
- Bust dart
- Rear gold zip detail
- 94% Polyester, 6% Elastane



Easy Care



White



Cream

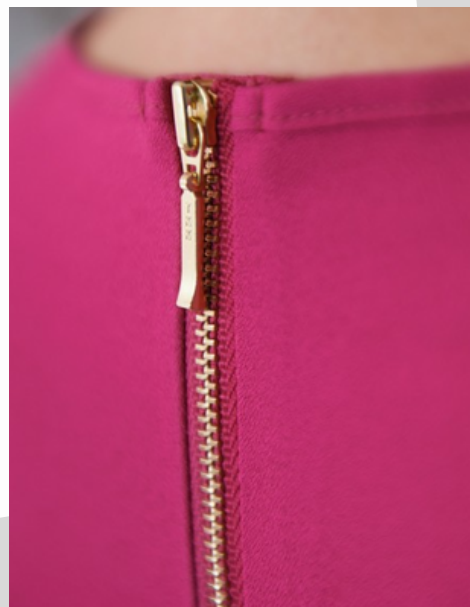
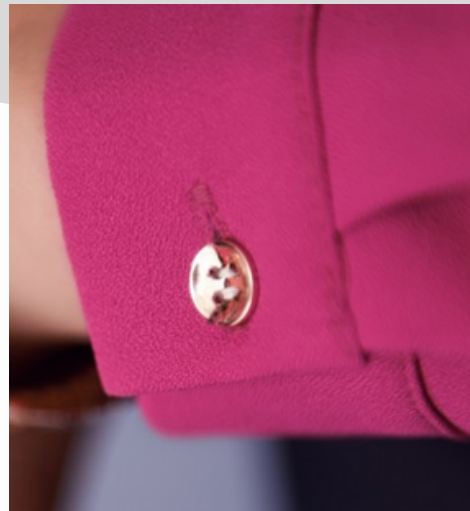


**Available  
Colours:**

**Sizes:**  
6-30 regular

# Roma crepe de chine Blouse

Long Sleeve  
Women's Blouse



- Round neck
- Front pleat detail
- Bust dart
- Single gold button cuff
- Rear gold zip detail
- Semi fitted
- 100% Polyester



Easy Care

## Available Colours:

Fucshia Sky Blue Burgandy Black Royal Blue Navy



**Sizes:**  
6-30 regular

morethansafety

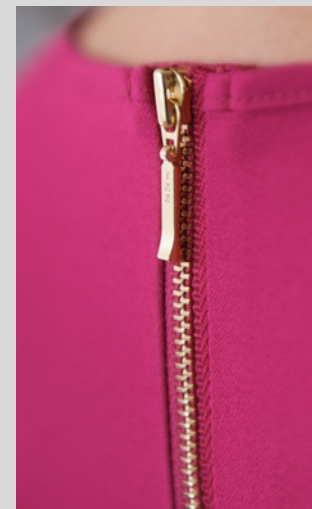
WOMEN'S BLOUSES

# Verona crepe de chine Blouse

Short Sleeve  
Women's Blouse



**Sizes:**  
6-30 regular



Easy Care

## Available Colours:

Fucshia Sky Blue Burgandy Black Royal Blue Navy



Burg/Print Sky/ Print Blk/Print Roy/Print



- Round neck
- Front pleat detail
- Bust dart
- Rear gold zip detail
- Semi fitted
- 100% Polyester



# Andria Pussy Bow Blouse



**Sizes:**  
6-26 regular



Easy Care



Front tie bow detail

- Tie front
- V neck
- Double ply fabric front & back
- Elasticated cuff
- 96% Polyester, 4% Elastane



Easy Care



Lightweight  
125glm



## Available Colours:

White

Sky Blue

Nude

Black



# Flavia Pussy Bow Blouse



Front tie bow detail

96% Polyester,  
4% Elastane

**Sizes:**  
6-26 regular



Easy Care



Lightweight  
125g/m

- Tie front
- V neck
- Double ply fabric front & back
- Single ply fabric sleeve

## Available Colours:

White

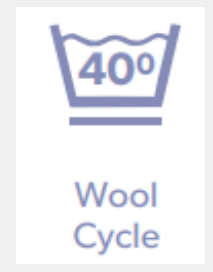
Sky Blue

Nude

Black



# Parma Blouse







- Semi fitted
- Long sleeve, fly front
- Button up collar
- Single button cuff
- 55% Cotton, 45% Polyester
- Easy iron, poplin weave



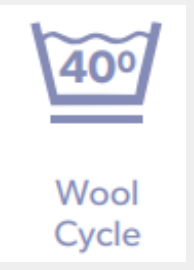
**Sizes:**  
6-26 regular

**Available Colours:**

-  Blue
-  White
-  Grey
-  Navy



# Palena Blouse



- Semi fitted
- Long sleeve
- Single 2 button cuff
- 55% Cotton, 45% Polyester
- Easy iron, poplin weave







**Sizes:**

4 - 30 Regular

(Black) available from size  
6 - 24

**Available Colours:**

-  Lilac
-  White
-  Blue
-  Black

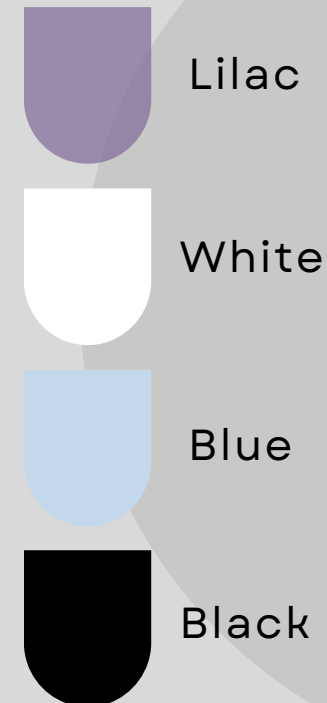




# Paduli Blouse

- Semi fitted
- Short sleeve, Adjustable cuff
- 55% Cotton, 45% Polyester
- Easy iron, poplin weave

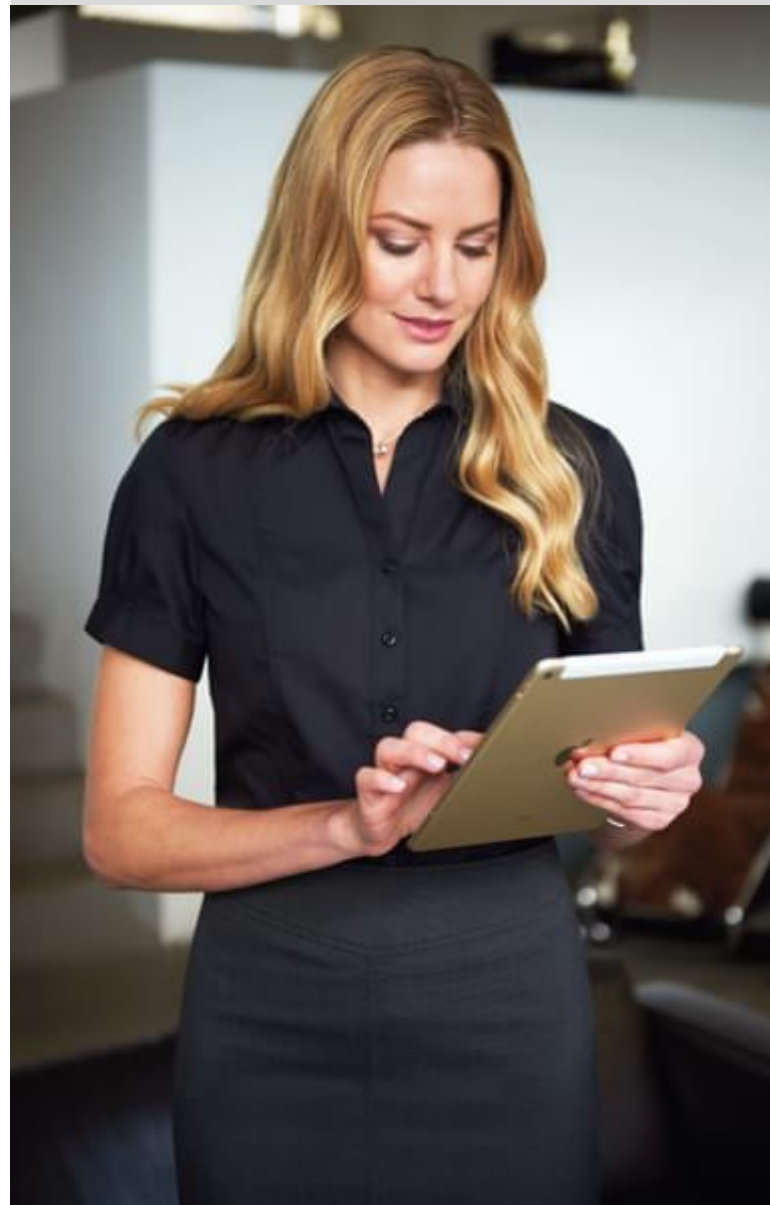
### Available Colours:

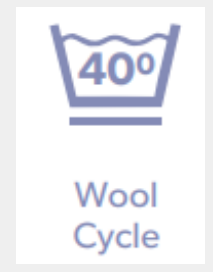


### Sizes:

4 - 30 Regular

(Black)  
available from  
size 6 - 24





# Modena Blouse





- Semi fitted
- Short sleeve, fly front
- Button up collar
- Single button cuff
- 55% Cotton, 45% Polyester
- Easy iron, poplin weave



**Sizes:**  
6-26 regular

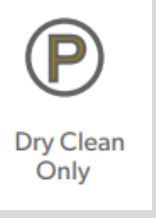


**Available Colours:**

-  Blue
-  White
-  Grey
-  Navy



# Oliva



**Sizes:**

- XS 4 - 6
- S 8 - 10
- M 12 - 14
- L 16 - 18
- XL 20 - 22
- Centre back length at size M = 51.5cm
- 2XL 24 - 26

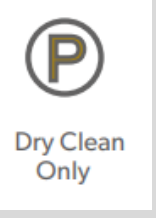
**Available Colours:**

- A- Navy
- B-Grey Check
- C-Green Check



# Nashville

40% Wool, 40% Polyester 20% Mixed fibres with Teflon finish



High Level of Stain Resistance

Cloth back with vent detail and adjuster

5 button front

2 welt pockets

### Available Colours:

- A- Navy H/B
- B- Navy Check
- C- Charc/ Pink
- D- Green/Blue
- E- Grey/ Brown
- F- Charc H/B

### Sizes:

XS 4 - 6 S 8 - 10 M 12 - 14 L 16 - 18 XL 20 - 22  
2XL 24 - 26





# Atlanta & Augusta



Wool Cycle



Wash Separately



Reshape garments naturally



Do NOT tumble dry



Cool iron over damp cloth



Alternatively, garments can be dry cleaned

## Atlanta V neck jumper

- V-neck
- Ribbed neck
- Tubular cuff and hem
- Contrast inner neck strip
- 60% Cotton / 40% Acrylic - 12 Gauge Knit



## Augusta V neck cardigan

- V-neck
- Ribbed placket, hem and cuff,
- Contrast inner neck strip
- 60% Cotton / 40% Acrylic - 12 Gauge Knit

## Available Colours:

### Sizes:

- 6XS (4/6)
- S (8)
- M (10/12)
- L (14)
- XL (16/18)
- 2XL (20)
- 3XL (22/24)

-  Light Blue
-  Royal Blue
-  Navy
-  Fuchsia
-  Charcoal
-  Black



# Seattle Cardigan



Contrast inner neck strip

Crew neck

Ribbed neck & placket

Tubular cuff and hem



Easy Care

**Sizes:**

- 6XS (4/6)
- S (8)
- M (10/12)
- L (14)
- XL (16/18)
- 2XL (20)
- 3XL (22/24)

**Available Colours:**

- Light Blue
- Royal Blue
- Navy
- Fuchsia
- Charcoal
- Black



# Connaught Classic Fit Jacket



- 2 button, notch lapel
- 1 inside pocket,
- Centre vent



### Available Colours:

- A- Navy
- B- Charcoal
- C- Black
- D- Mid Grey



### Sizes:

- 6 - 18 short
- 6 - 30\* regular
- 8 - 24 long

\*Mid Grey available to 24R only. Centre back length at size 12R = 65.5cm

# Ariel Slim Fit Jacket



### Sizes:

- 6-16 - petite
- 4-24 - regular
- 6-16 - long

- Short, 'slim fit',
- 1 button jacket, notch lapel
- Centre vent

### Available Colours:

- A- Navy Pin Dot
- B- Navy
- C- Charcoal Pin Dot
- D- Black



# Vega Jacket



- Tailored fit
- Collarless styling with curved splits
- 2 internal jet pockets
- Curved front/back seams
- 64% Polyester, 34% Viscose, 2% Lycra

**Sizes:**

6-16 - petite

4-24 - regular

6-16 - long

Centre back length at

size 12R = 50cm

**Available Colours:**

**A**-Navy Pin Dot

**C**- Charcoal Pin Dot

**B**-Navy

**D**- Black



# WOMEN'S TROUSERS

## Grosvenor Straight Leg Trouser



- Straight leg trouser
- single button front fastening key card pocket
- half lined belt loops.
- Half hem width at size 12 = 22cm
- 65% Polyester, 35% Woo

**Sizes:**

6-30\* - waist in leg  
lengths 27" 29",  
31", 33" & 36"  
unfinished

A B C D

**Available Colours:**

- A-Navy**
- B-Charcoal**
- C- Black**
- D- Mid Grey**

## Bianca Trouser Tailored Leg



Easy Care

- Side pockets
- Mock hip pockets
- Straight leg
- 64% Recycled Polyester, 34% Viscose, 2% Lycra

**Sizes:**

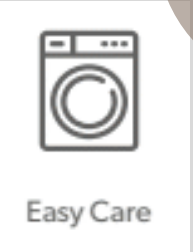
6-30\* - waist in leg  
lengths 27" 29",  
31", 33" & 36"  
unfinished



A B C D

**Available Colours:**

- A-Navy Pin Dot**
- B-Navy**
- C- Charcoal Pin Dot**
- D- Black**



# Houston Slim Leg Chinos

**Sizes:**

6-30\* - waist in leg lengths 27" 29", 31", 33" & 36" unfinished



**Available Colours:**

- A-Navy
- B-Beige
- C- Grey
- D-Black
- E- Olive
- F- Royal
- G-Tan

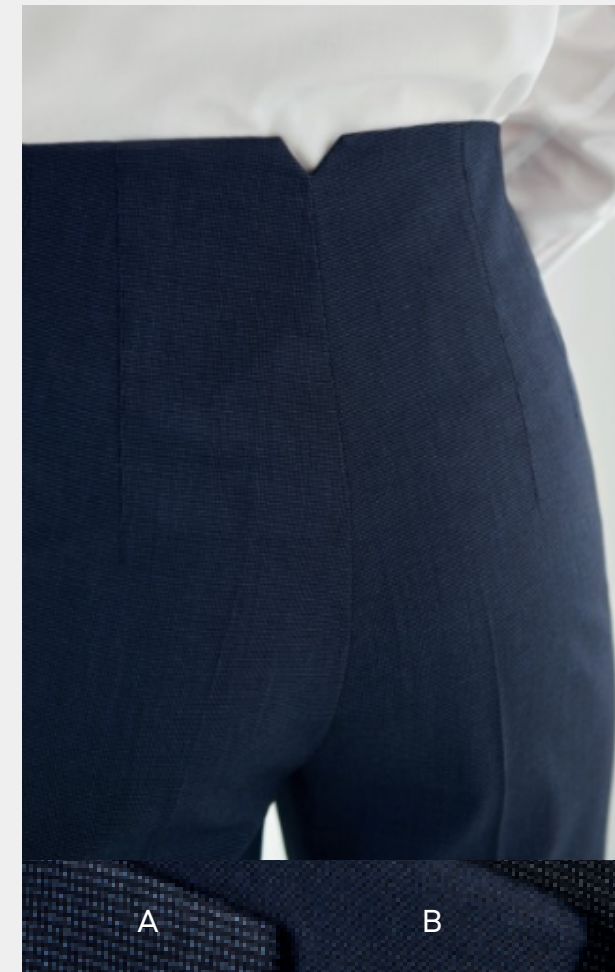
- Straight leg trouser
- single button front fastening key card pocket
- half lined belt loops.
- Half hem width at size 12 = 22cm
- 65% Polyester, 35% Woo

# Rosalind High Waist Trouser

- Grown on waistband
- Zip fastening with hook & bar
- 2 side pockets with welt openings
- 4 darts front and back
- 64% Recycled Polyester, 34% Viscose, 2% Lycra

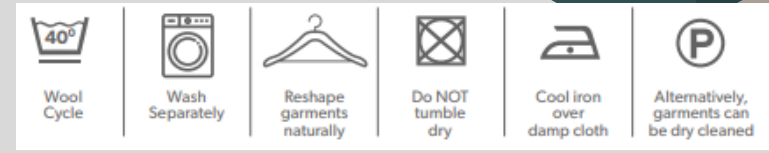
**Sizes:**

6-30\* - waist in leg lengths 27" 29", 31", 33" & 36" unfinished



**Available Colours:**

- A-Navy Pin Dot
- B-Navy
- C- Charcoal Pin Dot
- D- Black



# Stella Check Trousers

- Slim leg, front hook fastening
- 2 side pockets
- Mock hip pockets
- Feature jogger waist
- 64% Polyester, 34% Viscose, 2% Lycra



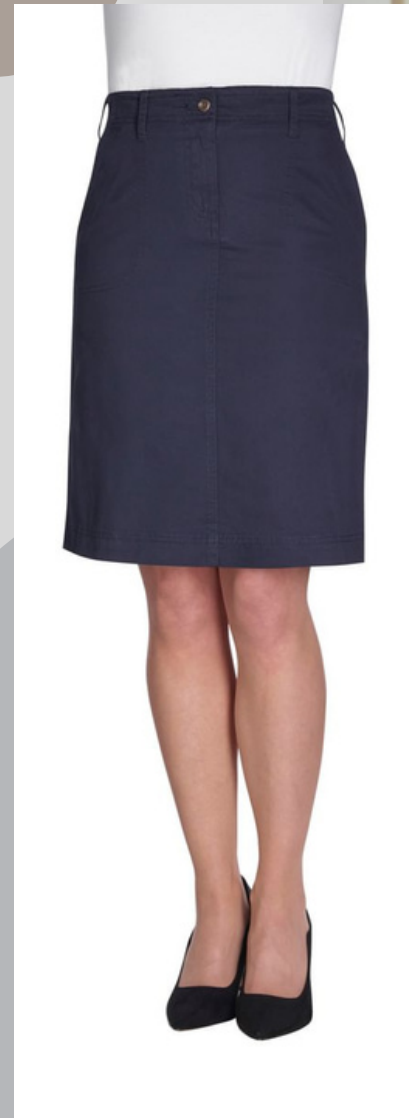
**Available Colours:**

- A- Navy Check
- B- Grey Check

**Sizes:**  
6-30\* - waist in leg  
lengths 27" 29",  
31", 33" & 36"  
unfinished

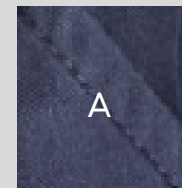


# Austin Chino Skirt



- Belt loops
- Side pockets
- Twin hip jett pockets
- 97% Cotton, 3% Elastane

### Available Colours:



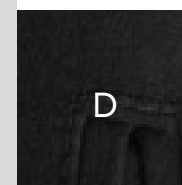
**A** - Navy



**B** - Beige



**C** - Grey



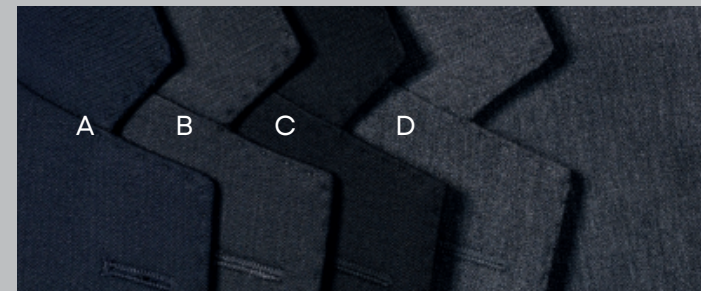
**D** - Black

# Wyndham Straight Skirt



### Available Colours:

- A**-Navy      **C**- Black
- B**-Charcoal   **D**- Mid Grey



- Straight skirt
- Centre vent
- Shaped back panels, full stretch lining
- 64% Recycled Polyester, 34% Wool, 2% Lycra

**Sizes:**  
6 - 24 regular  
- 22" 8 - 18  
long - 25"

**Sizes:**  
Sizes: 6 - 24  
regular - 22" 8 -  
18 long - 25"

\*Colour G (Mid-Grey) only available up to size 24.



# Juliet Straight Skirt



**Sizes:**  
4 - 24 regular - 22" 8  
- 30 long - 25"

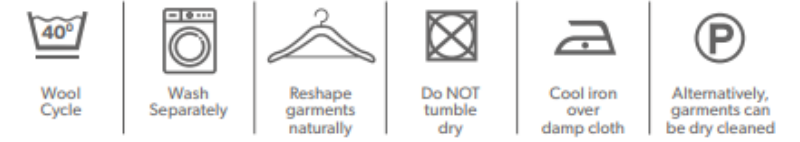


**Available Colours :**

- A- Navy Pin Dot
- B- Navy
- C- Charcoal Pin Dot
- D- Black



- Straight skirt
- Rear panel detail with centre vent
- Full stretch lining
- 64% Polyester, 34% Viscose, 2% Lycra



# Leona Jersey Stretch Skirt

- Pull on straight skirt
- 67% Viscose, 29% Polyamide, 4% Elastane

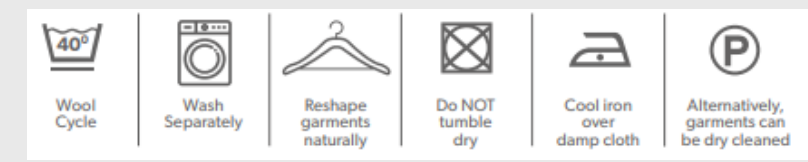


**Available Colours:**

- Navy
- Black



**Sizes:**  
6 - 14 short  
6 - 24 regular  
Length at size 12S = 20"  
(51cm)  
Length at size 12R = 22"  
(56cm)



# Celeste Jersey Stretch Dress

67% Viscose, 29% Polyamide, 4% Elastane



**Sizes:**  
6 - 24 regular  
  
Centre back length at size 12R = 99.5cm

### Available Colours:



# Portia Dress

- Short sleeve
- Centre back vent Waistline darts
- 64% Recycled Polyester, 34% Viscose, 2% Lycra



**Sizes:**  
4 - 24 Regular  
8 - 20 Long  
  
Centre back length at size 12R = 97cm

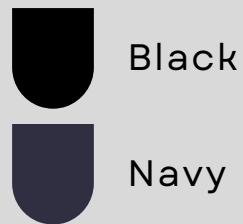


### Available Colours:

- A-**Navy Pin Dot
- B-**Navy
- C-** Charcoal Pin Dot
- D-** Black

# Belinda Jersey Stretch Dress

**Available Colours:**



- Short sleeve
- Fit and flare
- 2 bust darts
- Waist seam detail
- Unlined, concealed zip
- 67% Viscose, 29% Polyamide, 4% Elastane



**Sizes:**

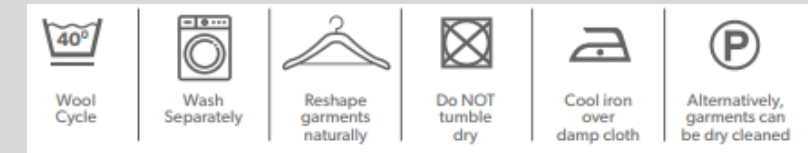
6 - 24 regular

Centre back length at size 12R = 100,5cm



# Corinthia V-neck Dress

65% Polyester,  
35% Wool



V-neck, short sleeve

Breast darts

Centre vent

Full stretch lining

**Sizes:**

6 - 24 regular

8 - 20 long

Centre back length at size 12R = 97cm



A

B

C

D

**Available Colours:**

A-Navy

B-Charcoal

C- Black

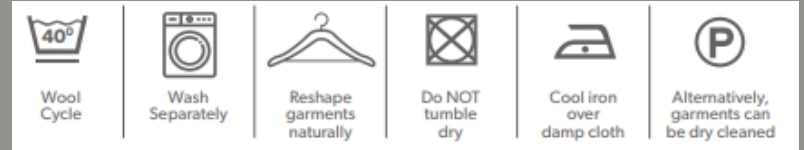
D- Mid Grey

# Teramo Dress

**Sizes:**

6 - 24 regular  
8- 20 long

Centre back length  
at size 12R = 97cm

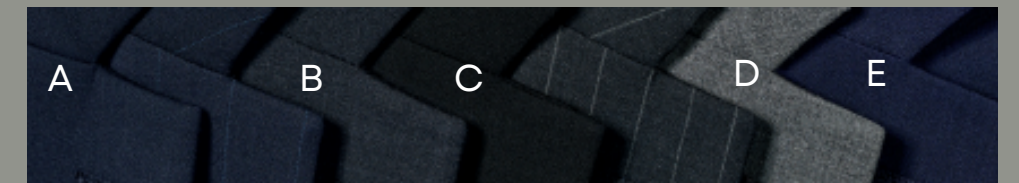


- Shift dress with princess seam
- Short sleeve, centre vent Stretch lining
- Centre back length at size 12R = 97cm
- Centre back length at size 12L = 104.5cm

54% Polyester, 44%  
Wool, 2% Lycra

**Available Colours:**

- A-** Navy
- B-** Charcoal
- C-** Black
- D-** Light Grey
- E-** Mid Blue



morethansafety

MEN'S SHIRT

# Rapino Classic Fit Shirt

- Classic fit
- Long Sleeve
- Chest pocket
- Single button cuff
- 55% Cotton, 45% Polyester
- Easy iron - poplin weave









Wool Cycle

**Sizes:**  
14.5" - 20"



## Available Colours:

- |   |       |   |       |
|---|-------|---|-------|
|  | White |  | Lilac |
|  | Black |  | Grey  |
|  | Blue  |  | Navy  |



Cotton-rich  
long sleeve  
business shirt



# Rosello Classic Fit Shirt

Sizes:  
14.5" - 20"



- Classic fit
- Short sleeve
- Chest pocket
- Single button cuff
- 55% Cotton, 45% Polyester
- easy iron - poplin weave

# Alba Slim Fit Shirt



Wool Cycle

## Available Colours:

- White
- Black
- Blue
- Lilac
- Grey
- Navy



- Slim fit, long sleeve
- Twin rear darts for defined silhouette
- Semi cutaway collar
- 55% Cotton, 45% Polyester - easy iron - poplin weave



Sizes:  
14" - 18"

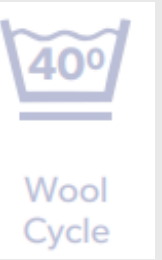
morethansafety

MEN'S SHIRT

# Pisa Slim Fit Shirt

**Sizes:**  
14.5" - 18"

Stretch cotton blend



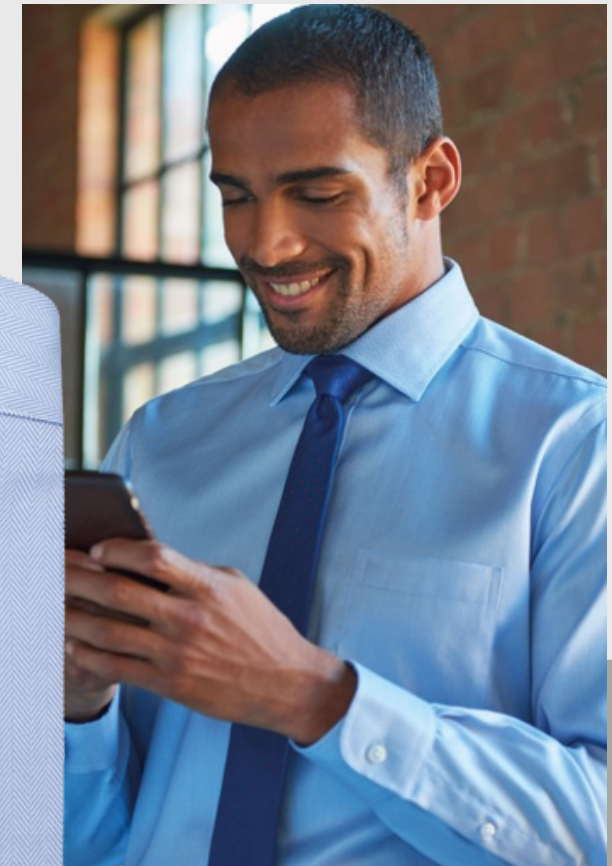
# Altare Single Cuff Shirt Cotton Herringbone

**Sizes:**  
14.5" - 20"

\*Extra long sleeve  
36.5" at size 15.5"

- Slim fit
- Long sleeve
- Single 2 button cuff
- Twin rear darts for defined silhouette.
- 57% polyester, 39% cotton, 4% elastane

## Available Colours:



- Classic fit
- Single cuff
- Chest pocket
- Taped seams
- Removable metal collar stiffeners
- 100% superfine cotton - easy iron

## Available Colours:



morethansafety

# MEN'S PREMIUM COTTON POLOS

## Frederick Premium Cotton Polo



## Hampton Premium Cotton Polo

### Sizes:

XS 34 - 36

S 38

M 40 - 42

L 44

XL 46 - 48

2XL 50

3XL 52 - 54

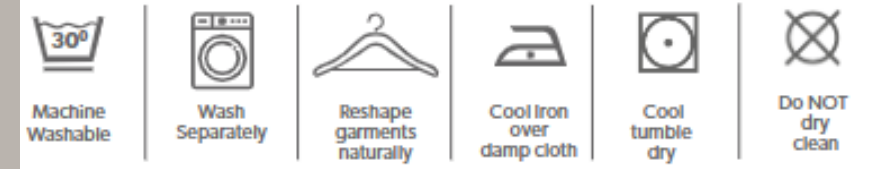
- Tailored fit
- Long sleeve,
- 3 button placket
- Ribbed cuff
- 2 side splits
- 95% Cotton, 5% Elastane

### Available Colours:



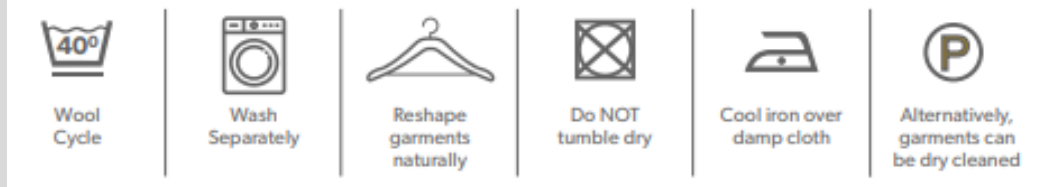
A- White  
B- Navy  
C- Grey Marl

D- Black  
E- Sky Marl



- Short sleeve
- 3 button placket
- Ribbed cuff
- 2 side splits
- 95% Cotton, 5% Elastane





# Dallas 1/4 zip Jumper

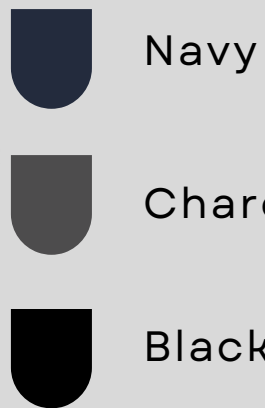


**Sizes:**

- XS = 34/36
- S = 38
- M = 40/42
- L = 44
- XL = 46/48
- 2XL = 50
- 3XL = 52/54



**Available Colours:**



- 1/4 zip jumper
- Faux leather zip pull
- Ribbed neck
- Cuff and hem, contrast inner neck strip
- 60% Cotton / 40% Acrylic - 12 Gauge Knit

# Boston V-neck Jumper



- 60% Cotton, 40% Acrylic
- 12 gauge knit

**Sizes:**

- XS = 34/36
- S = 38
- M = 40/42
- L = 44
- XL = 46/48
- 2XL = 50
- 3XL = 52/54

**Available Colours:**



morethansafety

MEN'S KNITWEAR

# Detroit V-neck Slipover

**Sizes:**

- XS = 34/36
- S = 38
- M = 40/42
- L = 44
- XL = 46/48
- 2XL = 50
- 3XL = 52/54

**Available Colours:**



-  Light Blue
-  Royal Blue
-  Navy
-  Charcoal
-  Black



Ribbed neck

V-neck, sleeveless

Contrast inner neck strip

Armhole & hem

60% Cotton / 40%  
Acrylic - 12 Gauge Knit



Wool Cycle



Wash Separately



Reshape garments naturally



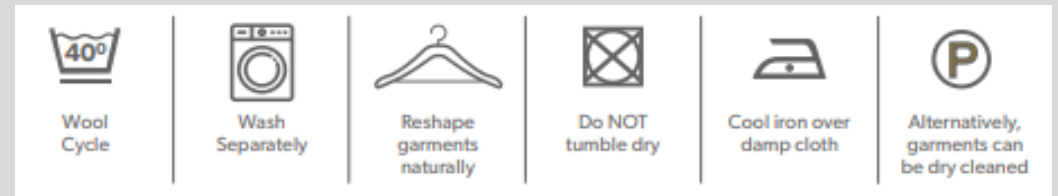
Do NOT tumble dry



Cool iron over damp cloth



Alternatively, garments can be dry cleaned



# Emilio Check Waistcoat



A- Navy Check    B- Grey check    C- Green check

**Sizes:**  
S 34-36 M 38-40 L 42-44  
XL 46-48 2XL 50-52

Centre back length at size M = 62cm



- 5 button front, 2 welt pockets,
- Part lining back with adjuster
- 64% Polyester, 34% Viscose, 2% Lycra

# Memphis Men's Waistcoat



40% Polyester, 40% Wool, 20% Mixed Fibres with Teflon finish

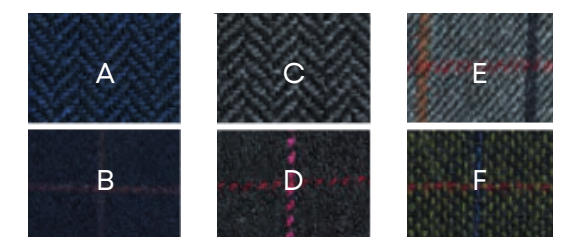
**Sizes:**  
S 34 - 36 M 38 - 40 L 42 - 44 XL 46 - 48 2XL 50 - 52

Centre back length at size M = 62cm



### Available Colours:

- A- Navy Herringbone
- B- Navy Check
- C- Grey Herringbone
- D- Charcoal Pink Check
- E- Grey Brown Check
- F- Green Blue Check



# Phoenix Tailored Fit Jacket



### Available Colours :

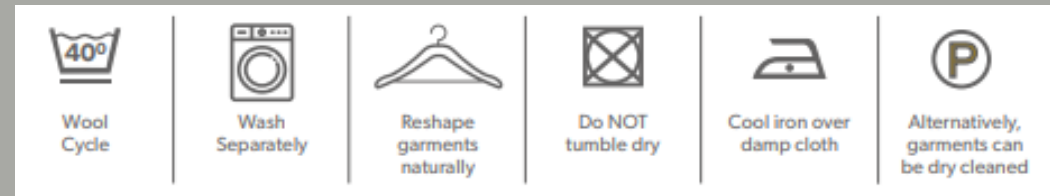
- A**-Navy Pin Dot      **C**- Charcoal Pin Dot
- B**-Navy                      **D**- Black

- 2 button jacket
- Side vents
- Tailored fit
- 64% Polyester, 34% Viscose, 2% Lycra

### Sizes:

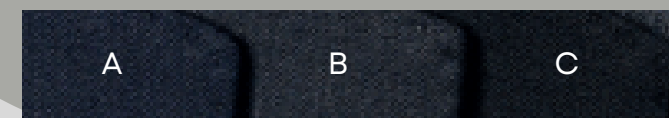
- 36-48 short
- 34-56 regular
- 38-48 long

Centre back length at size 40R = 77cm



# Langham Classic Fit Jacket

- Sizes:**  
36-48 short  
34-56 regular  
38-48 long



- A**-Navy      **B**-Charcoal      **C**- Black

### Available Colours:







- Single breasted classic fit jacket
- 3 button front, centre vent, 3 inside pockets
- Mobile phone pocket
- 64% Recycled Polyester, 34% Wool, 2% Lycra
- Centre back length at size 40R = 77cm



morethansafety

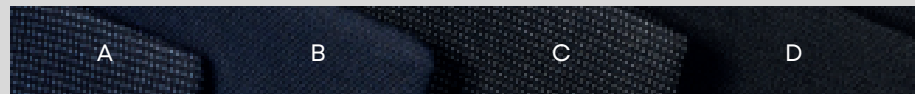
MEN'S JACKETS

# Pegasus Slim Fit Jacket

 Wool Cycle	 Wash Separately	 Reshape garments naturally	 Do NOT tumble dry	 Cool iron over damp cloth	 Alternatively, garments can be dry cleaned
--	---	--	---	---	--



- Slim fit
- Peaked lapel
- 1 button
- Twin rear vents
- 64% Recycled Polyester, 34% Viscose, 2% Lycra
- Centre back length at size 40R = 76cm



### Available Colours :

- |                        |                             |
|------------------------|-----------------------------|
| <b>A</b> -Navy Pin Dot | <b>C</b> - Charcoal Pin Dot |
| <b>B</b> -Navy         | <b>D</b> - Black            |

**Sizes:**  
34-44 short  
34-46 regular  
34-44 long

# Langham Single Pleat Trousers

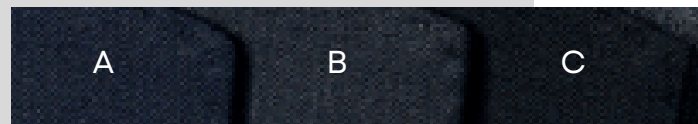


- Single pleat classic fit trouser
- 2 side pockets, 1 rear pocket
- Half hem width at waist size 34" = 22cm
- 65% Polyester, 35% Wool with Shape Memory Stretch Technology

**Sizes:**

28-56 - waist in leg lengths 29.5", 31.5", 33" & 36" unfinished

**Available Colours:**



A-Navy B-Charcoal C- Black



Wool Cycle



Wash Separately



Reshape garments naturally



Do NOT tumble dry



Cool iron over damp cloth



Alternatively, garments can be dry cleaned

# Phoenix Tailored Fit Trousers

**Sizes:**

28" - 52" - waist in leg lengths:  
S - 29.5"  
R - 31.5"  
L - 33"  
& 36" unfinished



- Tailored fit, flat front
- Half hem width at waist size 34" = 21cm
- 64% Polyester, 34% Viscose, 2% Elastane

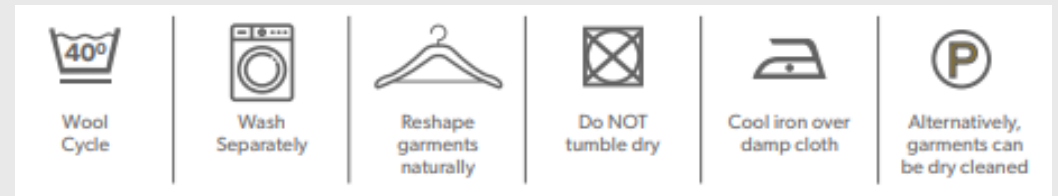
**Available Colours :**

A-Navy Pin Dot B-Navy C- Charcoal Pin Dot D- Black

morethansafety

# MEN'S TROUSERS

## Denver Classic Fit Chino



### Available Colours:

- A-Navy
- B-Beige
- C- Grey
- D-Black
- E- Olive
- F- Royal
- G-Tan



Telephone pocket

Classic fit, Flat front

Side pockets

Twin hip jett pockets with button

Stretch waistband

97% Cotton 3% Elastane

### Sizes:

28" - 52" - waist in leg lengths:

S - 29.5"

R - 31.5"

L - 33"

& 36" unfinished

Wash Care Instructions:



# Micro Waffle Tie

Size:  
One size



- Blade width 3". Length 57". WRAP Certified production
- Material: 100% polyester



### Available Colours:

- A-Aubergine
- B-Black
- C-Brown
- D- Dark Grey
- E-Lime
- F- Navy
- G-Purple
- H- Red
- I- Royal Blue
- J- Silver
- K- Sunflower
- L- Turquoise



# 'Colours Originals' fashion tie

Size:  
One size



- Blade width: 4"/10cm length: 57"/144cm
- Material: 100% polyester



### Available Colours:

- A-Black
- B-Bottle
- C-Brown
- D- Burgundy
- E-Emerald
- F- Gold
- G-Grass
- H- Grey
- I- Khaki
- J- Lime
- K- Mid blue
- L- Navy
- M-Orange
- N- Purple
- O- Red
- P- Royal
- Q- Silver
- R- Turquoise





# 'Colours' Chiffon scarf

Size:  
One size



- Width 6.5". Length 38.5"
- Material: 100% polyester chiffon weave

## Available Colours:

- |                 |                    |
|-----------------|--------------------|
| 1-Apple         | 20- Navy           |
| 2-Aubergine     | 21- Oasis Green    |
| 3-Black         | 22- Olive          |
| 4- Bottle       | 23- Orange         |
| 5-Brown         | 24- Pink           |
| 6- Burgundy     | 25- Purple         |
| 7-Chestnut      | 26- Red            |
| 8- Dark Grey    | 27- Rich Violet    |
| 9- Emerald      | 28- Royal          |
| 10- Fuchsia     | 29- Sage           |
| 11- Hot Pink    | 30- Sapphire       |
| 12- Khaki       | 31- Silver         |
| 13-Lemon        | 32- Steel          |
| 14- Light Blue  | 33- Strawberry Red |
| 15- Lilac       | 34- Sunflower      |
| 16- Lime        | 35- Teal           |
| 17- Marine Blue | 36- Terracotta     |
| 18- Mid Blue    | 37- Turquoise      |
| 19- Natural     | 38- White          |

## Wash Care Instructions:





# 'Colours' Scarf

Size:  
One size



### Available Colours:

- |                     |                      |
|---------------------|----------------------|
| <b>A</b> -Black     | <b>K</b> - Navy      |
| <b>B</b> -Bottle    | <b>L</b> - Orange    |
| <b>C</b> -Burgundy  | <b>M</b> -Purple     |
| <b>D</b> - Emerald  | <b>N</b> - Red       |
| <b>E</b> -Fuchsia   | <b>O</b> - Royal     |
| <b>F</b> - Gold     | <b>P</b> - Silver    |
| <b>G</b> -Grey      | <b>Q</b> - Turquoise |
| <b>H</b> - Khaki    | <b>R</b> - White     |
| <b>I</b> - Magenta  |                      |
| <b>J</b> - Mid Blue |                      |



- Width 10". Length 55". Suitable for screenprinting.
- Material: 100% polyester.