

HE WEARS

NICE
WAISTCOAT

MONACO
TAILORED FIT TROUSER

SHE WEARS

LILLE
SLIM FIT JACKET

PARIS
SLIM LEG TROUSER

NEW



Ready for the week ahead.



NEW
STYLES

TODAY COLLECTION

EVERY DAY

Highly durable and comfortable stretch fabrics combine with stylish garment designs to provide the same great look and functionality day in, day out. Complete with a women's trouser with a feature jogger waist, our Today Collection offers a practical solution for any active role in the demanding corporate marketplace. 2020 sees the launch of two new women's styles, featuring recycled polyester.

10 Mix & Match Styles	Slim Fit Tailored Fit	Available in 3 colours
 63% Polyester 34% Viscose 3% Lycra	 335gm Midweight Fabric	 40° Machine Washable
 Very Durable - Martindale Test > 90,000 rubs	← 16% → High Level of Stretch	



15 Recycled bottles
used per suit
Certain styles

MEN'S JACKET

DIJON Tailored Fit Jacket 108 - 109

TROUSER

MONACO Tailored Fit Trousers 111

WAISTCOAT

NICE Waistcoat 110

WOMEN'S JACKETS

NEW LILLE Slim Fit Jacket 112 - 113

CANNES Tailored Fit Jacket 113

TROUSERS

NEW PARIS Slim Leg Trousers 114

REIMS Tailored Leg Trousers 115

WAISTCOAT, SKIRT & DRESS

TOULOUSE Waistcoat 117

LYON Straight Skirt 117

BORDEAUX Dress 116

COLLECTION SUMMARY

COLOUR CHOICE AND AFTERCARE
Today Collection & Fabric Information 118 - 121

PARTICULARLY SUITABLE FOR:



Front of house



Retail



Hospitality



Health sectors



Education



Facilities Management



Security



Transport

DIJON
TAILORED FIT JACKET
3833C Charcoal



DIJON
TAILORED FIT JACKET
3833 A,C,D

Sizes:
38" - 44" short
34" - 56" regular
38" - 46" long

Centre back length
at size 40R = 76cm



1539A Navy



**NICE
WAISTCOAT**
1539 A,C,D

Sizes:
XS 34" - 36"
S 38" - 40"
M 42" - 44"
L 46" - 48"
XL 50" - 52"

Centre back length
at size M = 63cm



1539D Black

**MONACO
TAILORED FIT TROUSER**
8845 A,C,D

Sizes:
28" - 50" waist in leg lengths
S-29.5", R-31.5", L-33"
& 36" unfinished

Half hem width at
waist size 34" = 20cm

TAILORED FIT



8845D Black



LILLE
SLIM FIT JACKET
2348D Black

NEW



15 Recycled bottles
used per suit



CANNES
TAILORED FIT JACKET
2326C Charcoal



NEW



LILLE
SLIM FIT JACKET
2348 A,C,D

Sizes:
6 - 16 short
4 - 24 regular
6 - 16 long

Centre back length
at size 12R = 55.5cm



15 Recycled bottles
used per suit



CANNES
TAILORED FIT JACKET
2326 A,C,D

Sizes:
8 - 16 short
4 - 26 regular
10 - 18 long

Centre back length
at size 12R = 63cm



2349D Black



SLIM LEG



PARIS
SLIM LEG TROUSER
2349 A,C,D

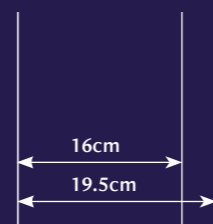
Sizes:
4 - 24 waist in leg lengths
S-27", R-29", L-31", XL-33"
& 36" unfinished

Half hem width at size 12 = 16cm

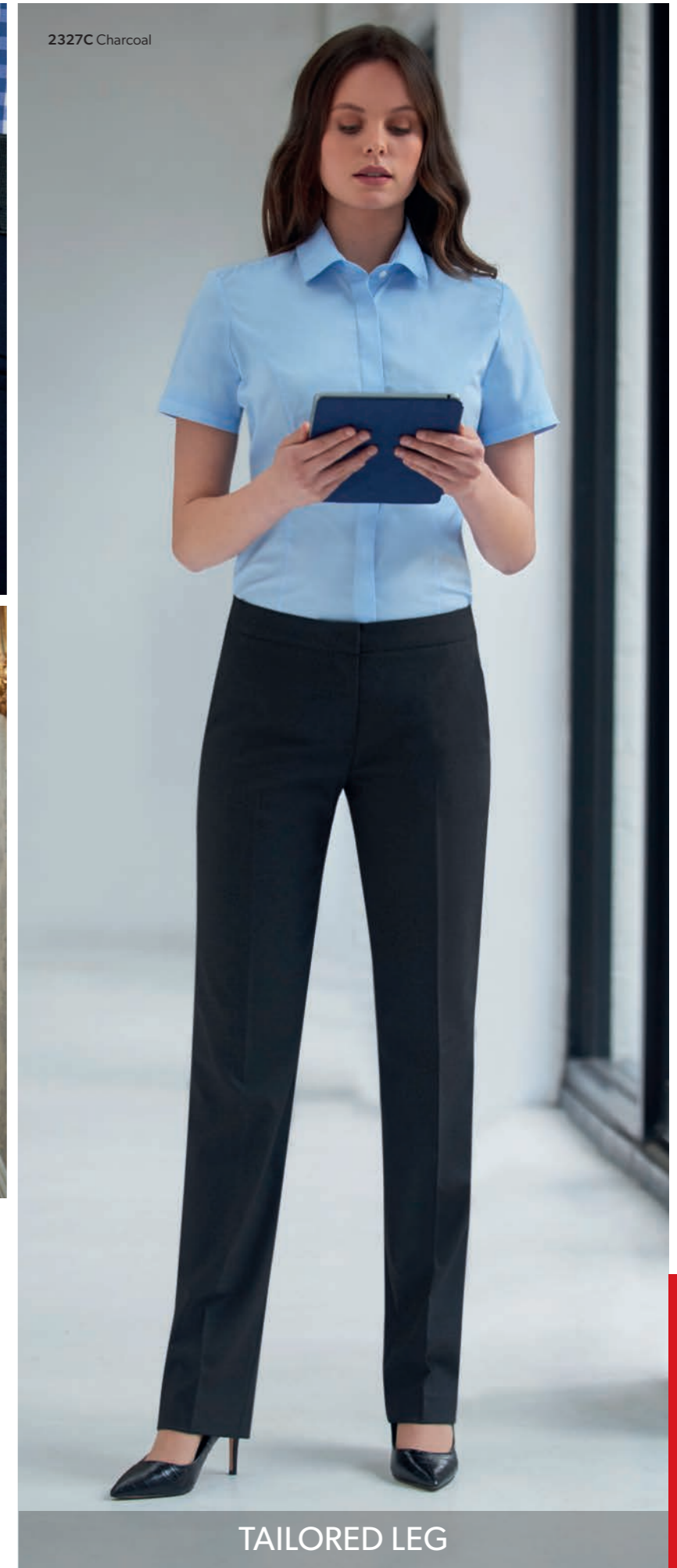


15 Recycled bottles
used per suit

2 Trousers hem widths



2327C Charcoal



TAILORED LEG



FASHION STRETCH
WAISTBAND



2327A Navy

REIMS
TAILORED LEG TROUSER
WITH FASHION STRETCH
WAISTBAND
2327 A,C,D

Sizes:
4 - 26 waist in leg lengths
S-27", R-29", L-31", XL-33"
& 36" unfinished

Half hem width at size 12 = 19.5cm



2347A Navy



BORDEAUX
DRESS
2347 A,C,D

Sizes:
6 - 24 regular
8 - 20 long

Centre back length
at size 12R = 97cm

LYON
STRAIGHT SKIRT
2329 A,C,D

Sizes:
4 - 26 regular - 22"
8 - 18 long - 25"



2329A Black

TOULOUSE
WAISTCOAT
2328 A,C,D

Sizes:
XS 4 - 6
S 8 - 10
M 12 - 14
L 16 - 18
XL 20 - 22
XXL 24 - 26

Centre back length
at size M = 51.5cm



2328D Black



WOMEN'S TODAY SUMMARY



LILLE JACKET
SLIM FIT
Navy

1 button, notch lapel, centre vent, twin outer welt pockets.

Sizes:
6 - 16 short
4 - 24 regular
6 - 16 long

Code & Colours:
2348 A / C / D

Centre back length at size 12R = 55.5cm



PARIS TROUSER
SLIM LEG
Navy

Front hook fastening, 2 side pockets, mock hip pockets.

Sizes:
4 - 24 waist in leg lengths
S-27", R-29", L-31", XL-33" & 36" unfinished

Code & Colours:
2349 A / C / D

Half hem width at size 12R = 16cm



15 Recycled bottles used per suit

2020 sees the launch of the LILLE jacket and PARIS trouser, the first styles in the Today Collection to use RECYCLED POLYESTER in the fabric blend. As part of our commitment to sustainable sourcing and manufacturing, this simple fabric change diverts 15 BOTTLES PER SUIT from landfill, reducing soil contamination and air & water pollution. What's more, recycled polyester requires less energy in production than virgin polyester. Recycled polyester will be rolled out throughout the entire TODAY COLLECTION during 2020.



CANNES JACKET
TAILORED FIT
Black

1 button, notch lapel, centre vent, twin outer welt pockets.

Sizes:
8 - 16 short
4 - 26 regular
10 - 18 long

Code & Colours:
2326 A / C / D

Centre back length at size 12R = 63cm



REIMS TROUSER
TAILORED LEG
Charcoal

Front hook fastening, 2 side pockets, mock hip pockets, feature fashion stretch waistband.

Sizes:
4 - 26 waist in leg lengths
S-27", R-29", L-31", XL-33" & 36" unfinished

Code & Colours:
2327 A / C / D

Half hem width at size 12R = 19.5cm



TOULOUSE WAISTCOAT
Navy

5 button front, 2 welt pockets, lining back adjuster.

Sizes:
XS 4 - 6
S 8 - 10
M 12 - 14
L 16 - 18
XL 20 - 22
XXL 24 - 26

Code & Colours:
2328 A / C / D

Centre back length at size M = 51.5cm



LYON SKIRT
Black

Straight skirt, centre vent, front waistband detail.

Sizes:
4 - 26 regular - 22"
8 - 18 long - 25"

Code & Colours:
2329 A / C / D



BORDEAUX DRESS
Charcoal

Curved neckline, satin stripe seam detail, pleats for ease of movement, princess seams, centre vent, centre back zip, short sleeve.

Sizes:
6 - 24 regular
8 - 20 long

Code & Colours:
2347 A / C / D

Centre back length at size 12R = 97cm



63% Polyester
34% Viscose
3% Lycra



335gm
Midweight Fabric



Machine Washable



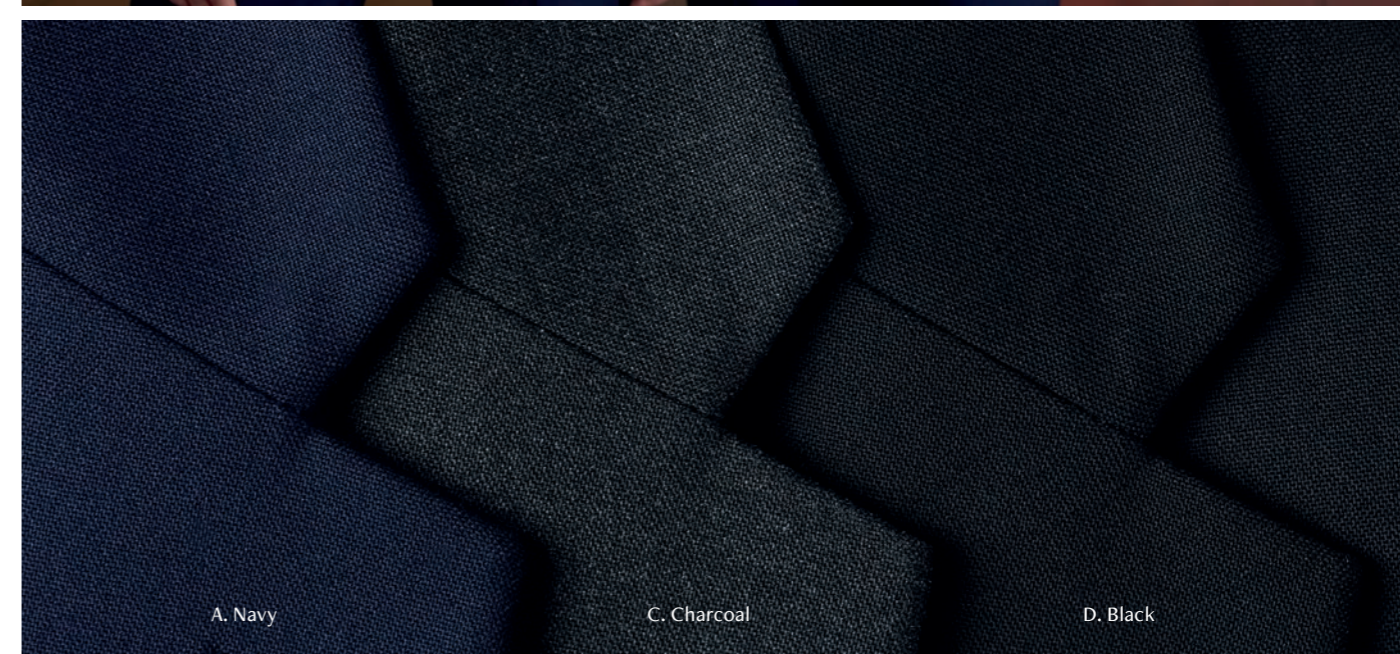
Very Durable -
Martindale Test
> 90,000 rubs

← 16% →

High Level of Stretch



Start the week looking good.



A. Navy

C. Charcoal

D. Black

MEN'S TODAY SUMMARY



DIJON JACKET

TAILORED FIT
Navy

2 button jacket, twin side vents, slant pockets, 3 internal pockets.

Sizes:
38" - 44" short
34" - 56" regular
38" - 46" long

Code & Colours:
3833 A / C / D

Centre back length at size 40R = 76cm



MONACO TROUSER

TAILORED FIT
Black

Flat front, 2 side pockets, 1 rear pocket.

Sizes:
28" - 50" waist in leg lengths
S-29.5", R-31.5", L-33" & 36" unfinished

Code & Colours:
8845 A / C / D

Half hem width at waist size 34" = 20cm



NICE WAISTCOAT

Charcoal

5 button front, lining backed with adjuster, 2 welt pockets.

Sizes:
XS 34" - 54"
S 38" - 40"
M 42" - 44"
L 46" - 48"
XL 50" - 52"

Code & Colours:
1539 A / C / D

Centre back length at size M = 63cm



Take the day on.

PARTICULARLY SUITABLE FOR:



FABRIC INFORMATION

Our TODAY collection is available in 3 fabric colour choices.



A. Navy

C. Charcoal

D. Black



63% Polyester
34% Viscose
3% Lycra



335gm
Midweight
Fabric



40°
Machine
Washable



Very Durable -
Martindale Test
> 90,000 rubs

← 16% →

High Level
of Stretch



Today lining

Highly durable and comfortable stretch fabrics combine with stylish garment designs to provide the same great look and functionality day in, day out. Complete with a women's trouser with a feature jogger waist, our Today Collection offers a practical solution for any active role in the demanding corporate marketplace. 2020 sees the launch of two new women's styles, featuring recycled polyester.



15 Recycled bottles
used per suit
Certain styles



WASHCARE INSTRUCTIONS

