



## SHIRT & BLOUSE COLLECTION



BUSINESS CASUAL



PREMIUM COTTON



NON-IRON COTTON



CREPE DE CHINE & STRETCH TOPS



COTTON RICH



OXFORD SHIRTS



STRETCH COTTON BLEND



BUSINESS ESSENTIALS



BUSINESS ESSENTIALS

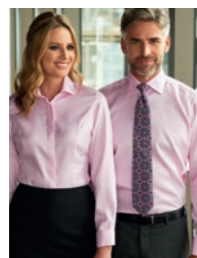
Working, together.



# SHIRT & BLOUSE COLLECTION

## FLEXIBILITY

Whether looking for the classic finishing touch or a modern, up to date style across your team, our range of shirts and blouses offers the ultimate in flexibility. Meticulously curated to perfectly complement every one of our suiting collections, the Shirt & Blouse Collection offers a style and fit for every taste and budget.



### PREMIUM COTTON / Pages 04 - 13

Collection of men's and women's shirts and blouses in luxurious, 100% cotton easy iron fabrics. Slim and classic fit options available.

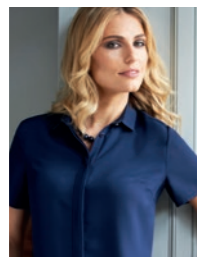
- 12 Mix and match styles
- Slim and classic fit options for men, semi-fitted styles for women
- Herringbone and poplin fabrics, in up to 4 colours
- 100% Superfine Cotton, easy iron



### NON-IRON COTTON / Pages 14 - 15

Created from beautiful 100% non-iron cotton fabrics, these brand-new shirts and blouse offer the ultimate in practicality, day in, day out.

- 4 Mix and match styles
- Slim and classic fit options for men, semi-fitted style for women
- Available in white
- 100% Cotton, non-iron
- 120gm fabric



### CREPE DE CHINE & STRETCH TOPS / Pages 16 - 26

Beautiful crepe de chine blouses in a variety of colours and designs. Superb quality stretch tops offering day to day practicality.

- 6 Mix and match styles for women
- Available in up to 9 solid colours, and 4 print designs
- Crepe de chine and stretch-blend easy care fabrics



### STRETCH COTTON BLEND / Pages 27 - 29

Cotton-based fabric with high stretch properties, guaranteeing great wearer comfort and exceptional fitting shirts and blouses.

- 4 Mix and match styles
- Men's slim fit, and women's semi-fitted styles
- Available in 3 colours
- 57% Polyester / 39% Cotton / 4% Elastane, easy iron
- 120gm fabric



### COTTON RICH / Pages 30 - 43

Go-to, flexible range of high quality shirts and blouses with a large selection of styles, colours and fits.

- 18 Mix and match styles
- Slim and classic fit options for men, semi-fitted styles for women
- Available in up to 14 colours, across 4 fabric designs
- Cotton rich fabrics, easy iron
- 120gm fabrics



### OXFORD SHIRTS / Pages 44 - 65

A staple of many wardrobes across the world, its reputation as a hard-wearing, versatile all-rounder is undeniable. Comfortable in a casual setting, sharp in a business environment, the Oxford is up there with the best of them.

- Stretch, Royal and Classic Oxford styles
- Tailored fit styles for men and women
- 3 fabric compositions
- 3 weights of fabric



### BUSINESS CASUAL / Pages 66 - 71

A stunning selection of casual shirts in royal Oxford, gingham and chambray styles, designed to complement both our Business Casual and suiting collections.

- 10 Mix and match styles
- Tailored fit options for men and women
- Available in 9 colours
- Cotton rich and 100% cotton fabrics, easy iron



### BUSINESS ESSENTIALS / Pages 72 - 77

Business essentials - premium quality shirts and blouses offering fantastic performance and value for money.

- 9 Mix and match styles
- Slim and classic fit options for men, semi-fitted styles for women
- Available in 2 colours
- 65% Polyester / 35% Cotton
- 115gm fabrics

The Shirt & Blouse Collection offers the ultimate in flexibility and guarantees exceptional performance in many market sectors, including:



# PREMIUM COTTON

100% SUPERFINE COTTON / 130gm HERRINGBONE WEAVE - EASY IRON - MATCHING STYLES

MEN'S **ANDORA** Classic fit, Double cuff



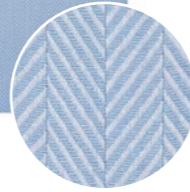
- Double cuff with complementary silk cuff knots
- Taped seams
- Removable metal collar stiffeners
- Men's extra long sleeve available



A. White Herringbone



B. Blue Herringbone



F. Pink Herringbone



G. Lilac Herringbone



## ANDORA SHIRT

Classic fit, Double cuff

Sizes:  
14.5" - 20"  
\*Extra long sleeve 36.5"  
at size 15.5"

Codes & Colours:  
7656A White Herringbone  
7656AL White Herringbone  
Extra long sleeve 36.5"  
7656B Blue Herringbone  
7656BL Blue Herringbone  
Extra long sleeve 36.5"  
7656F Pink Herringbone  
7656G Lilac Herringbone

7656A  
ANDORA

## CLASSIC FIT DOUBLE CUFF



7655B  
ALTARE

# CLASSIC FIT SINGLE CUFF



7720A  
PRATO

# SLIM FIT DOUBLE CUFF



## PREMIUM COTTON

100% SUPERFINE COTTON / 130gm HERRINGBONE WEAVE - EASY IRON - MATCHING STYLES

MEN'S **ALTARE** Classic fit, Single cuff



- Chest pocket
- Taped seams
- Removable metal collar stiffeners
- Men's extra long sleeve available



**ALTARE SHIRT**  
Classic fit, Single cuff

Sizes:  
14.5" - 20"  
\*Extra long sleeve 36.5"  
at size 15.5"

Codes & Colours:

7655A	White Herringbone
7655AL	White Herringbone Extra long sleeve 36.5"
7655B	Blue Herringbone
7655BL	Blue Herringbone Extra long sleeve 36.5"



A. White Herringbone



B. Blue Herringbone



MEN'S **PRATO** Slim fit, Double cuff



- Double cuff with complementary silk cuff knots
- Taped seams
- Removable metal collar stiffeners



**PRATO SHIRT**  
Slim fit, Double cuff

Sizes:  
14.5" - 18"

Codes & Colours:

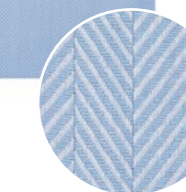
7720A	White Herringbone
7720B	Blue Herringbone



A. White Herringbone



B. Blue Herringbone





2247B VILETA  
2249B OZZERO



2283F PROSECCO  
7656F ANDORA

## PREMIUM COTTON

100% SUPERFINE COTTON / 130gm HERRINGBONE WEAVE - EASY IRON - MATCHING STYLES

WOMEN'S **VILETA** Semi fitted, Double cuff  
WOMEN'S **OZZERO** Semi fitted, Short sleeve

- Double cuff with complementary silk cuff knots (Vileta)
- Taped seams
- Fly front



A. White Herringbone

B. Blue Herringbone

**VILETA** BLOUSE  
Semi fitted, Double cuff

Sizes:  
6 - 24 regular

Codes & Colours:  
2247A White Herringbone  
2247B Blue Herringbone



**OZZERO** BLOUSE  
Semi fitted, Short sleeve

Sizes:  
6 - 24 regular

Codes & Colours:  
2249A White Herringbone  
2249B Blue Herringbone



## PREMIUM COTTON

100% SUPERFINE COTTON / 130gm HERRINGBONE WEAVE - EASY IRON - MATCHING STYLES

WOMEN'S **PROSECCO** Long sleeve, Single cuff  
WOMEN'S **CHIANTI** Semi fitted, Short sleeve

- Taped seams
- Button up collars
- Fly front



F. Pink Herringbone

G. Lilac Herringbone

**PROSECCO** BLOUSE  
Long sleeve, Single cuff,  
Button up collar

Sizes:  
6 - 24 regular

Codes & Colours:  
2283F Pink Herringbone  
2283G Lilac Herringbone



**CHIANTI** BLOUSE  
Semi fitted, Short sleeve,  
Button up collar

Sizes:  
6 - 24 regular

Codes & Colours:  
2284F Pink Herringbone  
2284G Lilac Herringbone



2244A  
TREVISO



## PREMIUM COTTON

100% SUPERFINE COTTON / 120gm EASY IRON - MATCHING STYLES

WOMEN'S **TREVISO** Semi fitted, Single cuff

- Single 3 button cuff
- Classic button up collar



A. White



B. Blue



2244B  
TREVISO

**TREVISO** BLOUSE  
Semi fitted, Single cuff

Sizes:  
6 - 24 regular

Codes & Colours:  
2244A White  
2244B Blue



7641A  
CHEADLE

CLASSIC  
FIT



7643B  
CHELFORD

SLIM  
FIT



## PREMIUM COTTON

100% SUPERFINE COTTON / 120gm EASY IRON - MATCHING STYLES

MEN'S **CHESTER** Classic fit, Double cuff

MEN'S **CHEADLE** Classic fit, Single cuff

- Chest pocket (Cheadle)
- Taped seams
- Removable metal collar stiffeners
- Men's extra long sleeve available



A. White

**CHESTER SHIRT**  
Classic fit, Double cuff

Sizes:  
14.5" - 20"

Codes & Colours:  
7642A White  
7642B Blue



B. Blue

**CHEADLE SHIRT**  
Classic fit, Single cuff

Sizes:  
14.5" - 20"  
\*Extra long sleeve 36.5" at size 15.5"

Codes & Colours:  
7641A White  
7641AL White Extra long sleeve 36.5"  
7641B Blue



MEN'S **CHELFORD** Slim fit, Double cuff

MEN'S **CHELSEA** Slim fit, Single cuff

- Taped seams
- Removable metal collar stiffeners



A. White

**CHELFORD SHIRT**  
Slim fit, Double cuff

Sizes:  
14.5" - 18"

Codes & Colours:  
7643A White  
7643B Blue



B. Blue

**CHELSEA SHIRT**  
Slim fit, Single cuff

Sizes:  
14.5" - 18"

Codes & Colours:  
7762A White  
7762B Blue





## NON-IRON COTTON

100% COTTON / 120gm NON-IRON - MATCHING STYLES

WOMEN'S **SILVI** Semi fitted, Single cuff

- Non-iron
- Point collar
- Large size range 4R - 24R
- Machine washable at 40°



A. White



**SILVI BLOUSE**  
Semi fitted, Single cuff

Sizes:  
4 - 24 regular

Code & Colour:  
2350A White



## NON-IRON COTTON

100% COTTON / 120gm NON-IRON - MATCHING STYLES

MEN'S **ESTE** Slim fit, Long sleeve

MEN'S **MILANO** Slim fit, Short sleeve

MEN'S **ORTONA** Classic fit, Long sleeve

- Non-iron
- Chest pocket (Ortona)
- Large size range 14" - 18" (Este & Milano)
- Large size range 14.5" - 20" (Ortona)
- Machine washable at 40°



A. White

**ESTE SHIRT**  
Slim fit, Single cuff

Sizes:  
14" - 18"

Code & Colour:  
7978A White



A. White

**MILANO SHIRT**  
Slim fit, Short sleeve

Sizes:  
14" - 18"

Code & Colour:  
7996A White



A. White

**ORTONA SHIRT**  
Classic fit, Single cuff

Sizes:  
14.5" - 20"

Code & Colour:  
7979A White

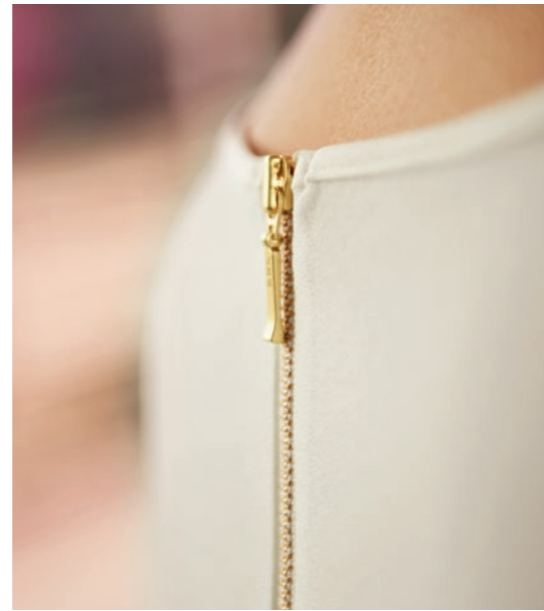


NON-IRON COTTON





2264A  
RIOLA



2265B  
FELINA

# CREPE DE CHINE

WHITE & CREAM - 94% POLYESTER / 6% ELASTANE / 205gm EASY CARE - STRETCH FABRIC

WOMEN'S **RIOLA** Long Sleeve with Round Neck and Front Pleat Detail  
WOMEN'S **FELINA** Short Sleeve with Round Neck and Front Pleat Detail



- 94% Polyester / 6% Elastane
- Sizes: 6R - 30R
- Long & Short sleeve women's blouses, round neck, front pleat detail, bust darts
- Single gold button cuff (Riola)
- Rear gold zip detail
- Easy care, machine washable at 30°

Sizes: 6 - 30 regular



A. White



B. Cream

**RIOLA** BLOUSE  
Long sleeve

Sizes:  
6 - 30 regular

Codes & Colours:  
2264A White  
2264B Cream



**FELINA** BLOUSE  
Short sleeve

Sizes:  
6 - 30 regular

Codes & Colours:  
2265A White  
2265B Cream





2300B  
CAPRI



2300A  
CAPRI



2301A  
SIENA



2301B  
SIENA

# CREPE DE CHINE

WHITE & CREAM - 94% POLYESTER / 6% ELASTANE / 205gm EASY CARE - STRETCH FABRIC

WOMEN'S **CAPRI** Long Sleeve with Collar and Fly Front with Button Detail  
 WOMEN'S **SIENA** Short Sleeve with Collar and Fly Front with Button Detail



- 94% Polyester / 6% Elastane
- Sizes: 6R - 30R
- Long & Short sleeve women's blouses with fly front with button detail
- Central back pleat
- Metallic button cuff (Capri)
- Easy care, machine washable at 30°

Sizes: 6 - 30 regular



B. Cream



A. White

**CAPRI** BLOUSE  
Long sleeve

Sizes:  
6 - 30 regular

Codes & Colours:  
2300A White  
2300B Cream



**SIENA** BLOUSE  
Short sleeve

Sizes:  
6 - 30 regular

Codes & Colours:  
2301A White  
2301B Cream



# CREPE DE CHINE

SOLID COLOURS - 100% POLYESTER / 140gm EASY CARE - STRETCH FABRIC

WOMEN'S FIRENZE Long Sleeve with Collar and Fly Front with Button Detail  
WOMEN'S VENEZIA Short Sleeve with Collar and Fly Front with Button Detail



- 100% Polyester
- Sizes: 6R - 30R
- Long & Short sleeve women's blouses with fly front with button detail
- Central back pleat
- Metallic button cuff (Firenze)
- Easy care, machine washable at 30°

**FIRENZE BLOUSE** Long sleeve **Sizes:** 6 - 30 regular



Codes & Colours:  
2298A Fuchsia

2298B Sky Blue

2298J Navy

**VENEZIA BLOUSE** Short sleeve **Sizes:** 6 - 30 regular



Codes & Colours:  
2299A Fuchsia

2299B Sky Blue

2299J Navy



2298B  
FIRENZE



2298A  
FIRENZE



2299J  
VENEZIA

BROOK TAVERNER

CREPE DE CHINE



2279J  
ROMA



2280C  
VERONA



2279E  
ROMA



2279A  
ROMA

# CREPE DE CHINE

SOLID COLOURS - 100% POLYESTER / 140gm EASY CARE - STRETCH FABRIC

WOMEN'S **ROMA** Long Sleeve with Round Neck and Front Pleat Detail  
 WOMEN'S **VERONA** Short Sleeve with Round Neck and Front Pleat Detail



- 100% Polyester with mechanical stretch
- Sizes: 6R - 30R
- Long & Short sleeve women's blouses with fly front pleat detail, bust darts
- Single gold button cuff (Roma)
- Rear gold zip detail
- Easy care, machine washable at 30°

**ROMA** BLOUSE Long sleeve **Sizes:** 6 - 30 regular



Codes & Colours:

- 2279A Fuchsia    2279B Sky Blue    2279C Burgundy    2279D Black    2279E Royal Blue    2279J Navy

**VERONA** BLOUSE Short sleeve **Sizes:** 6 - 30 regular



Codes & Colours:

- 2280A Fuchsia    2280B Sky Blue    2280C Burgundy    2280D Black    2280E Royal Blue    2280J Navy

# CREPE DE CHINE

CO-ORDINATING DESIGNS - 100% POLYESTER / 140gm EASY CARE - STRETCH FABRIC

WOMEN'S **ROMA** Long Sleeve with Round Neck and Front Pleat Detail  
 WOMEN'S **VERONA** Short Sleeve with Round Neck and Front Pleat Detail



- 100% Polyester with mechanical stretch
- Sizes: 6R - 30R
- Long & Short sleeve women's blouses with fly front pleat detail, bust darts
- Single gold button cuff (Roma)
- Rear gold zip detail
- Easy care, machine washable at 30°

**ROMA** BLOUSE Long sleeve **Sizes:** 6 - 30 regular



Codes & Colours:

2279H Royal Blue/Navy

2279F Sky Blue/Navy

2279G Burgundy/Navy

2279I Black/White

**VERONA** BLOUSE Short sleeve **Sizes:** 6 - 30 regular



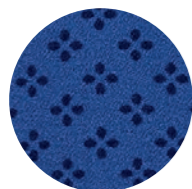
Codes & Colours:

2280H Royal Blue/Navy

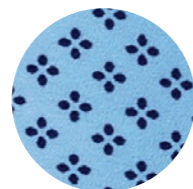
2280F Sky Blue/Navy

2280G Burgundy/Navy

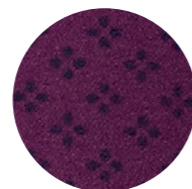
2280I Black/White



H. Royal Blue/Navy



F. Sky Blue/Navy



G. Burgundy/Navy



I. Black/White



2279F  
ROMA



2279I  
ROMA



2280G  
VERONA



2280H  
VERONA



2266D  
MIRA



2267A  
SASSA

## STRETCH TOPS

95% VISCOSE / 5% ELASTANE / 220gm EASY CARE - STRETCH FABRIC

WOMEN'S **MIRA** 3/4 sleeve  
WOMEN'S **SASSA** Short sleeve

- 95% Viscose / 5% Elastane
- Sizes: XS, S, M, L, XL, XXL
- 3/4 & Short sleeve women's stretch tops
- Machine washable at 30°



D. Black

**MIRA** STRETCH TOP  
3/4 sleeve

Sizes:  
XS, S, M, L, XL, XXL

Codes & Colours:  
2266A White  
2266D Black



A. White

**SASSA** STRETCH TOP  
Short sleeve

Sizes:  
XS, S, M, L, XL, XXL

Codes & Colours:  
2267A White  
2267D Black



2251A  
FRANCA

## STRETCH COTTON BLEND

57% POLYESTER / 39% COTTON / 4% ELASTANE / 120gm EASY IRON - STRETCH FABRIC

WOMEN'S **FRANCA** Semi fitted, Single cuff

- Fly front
- Contrast White rounded collar
- Contrast White single button cuff



A. White



**FRANCA** BLOUSE  
Semi fitted, Single cuff

Sizes:  
6 - 24 regular

Code & Colour:  
2251A White with front panel stripe



# STRETCH COTTON BLEND

57% POLYESTER / 39% COTTON / 4% ELASTANE / 120gm EASY IRON - STRETCH FABRIC

WOMEN'S **TREVI** Semi fitted, Long sleeve  
 WOMEN'S **SOAVE** Semi fitted, Short sleeve



- Fly front
- Rounded collar
- Single button cuff (Trevi)



2269A  
SOAVE



2268D  
TREVI



2268B  
TREVI



A. White



B. Sky Blue



D. Black

**TREVI** BLOUSE  
Semi fitted, Single cuff

Sizes:  
6 - 24 regular

Codes & Colours:  
2268A White  
2268B Sky Blue  
2268D Black



**SOAVE** BLOUSE  
Semi fitted, Short sleeve

Sizes:  
6 - 24 regular

Codes & Colours:  
2269A White  
2269B Sky Blue  
2269D Black



3 COLOURS  
IN BOTH  
STYLES

# STRETCH COTTON BLEND

57% POLYESTER / 39% COTTON / 4% ELASTANE / 120gm EASY IRON - STRETCH FABRIC

MEN'S **PISA** Slim fit, Long sleeve



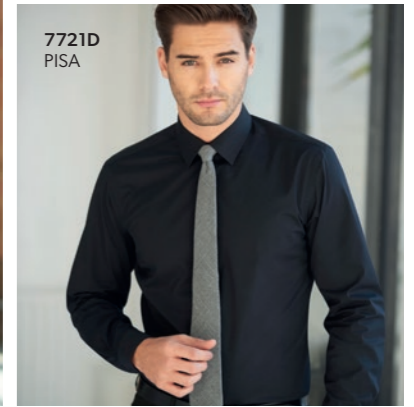
- Single 2 button cuff
- Twin rear darts for defined silhouette



7721B  
PISA



7721A  
PISA



7721D  
PISA



A. White



B. Sky Blue



D. Black

**PISA** SHIRT  
Slim fit, Single cuff

Sizes:  
14.5" - 18"

Codes & Colours:  
7721A White  
7721B Sky Blue  
7721D Black





2214F  
PALENA



2214A  
PALENA



2216D  
PADULI



2216E  
PADULI

# COTTON RICH

55% COTTON / 45% POLYESTER / 120gm EASY IRON - MATCHING STYLES

WOMEN'S **PALENA** BLOUSE Semi fitted, Long sleeve  
WOMEN'S **PADULI** BLOUSE Semi fitted, Short sleeve



- Single 2 button cuff (Palena)
- Short sleeve with adjustable cuff (Paduli)

**PALENA** BLOUSE Semi fitted, Long sleeve **Sizes:** 4 - 30 regular \*Black 6 - 24 regular



Codes & Colours:

- 2214A White
- 2214E Blue
- 2214F Lilac
- 2214D Black

**PADULI** BLOUSE Semi fitted, Short sleeve **Sizes:** 4 - 30 regular \*Black 6 - 24 regular



Codes & Colours:

- 2216A White
- 2216E Blue
- 2216F Lilac
- 2216D Black





2295H  
PARMA



2295A  
PARMA



2296E  
MODENA



2296G  
MODENA

# COTTON RICH

55% COTTON / 45% POLYESTER / 120gm EASY IRON - MATCHING STYLES

WOMEN'S **PARMA** BLOUSE Semi fitted, Long sleeve  
WOMEN'S **MODENA** BLOUSE Semi fitted, Short sleeve



- Fly front
- Button up collar
- Single button cuff (Parma)
- Short sleeve (Modena)

**PARMA** BLOUSE Semi fitted, Long sleeve **Sizes:** 6 - 24 regular



Codes & Colours:

2295A White

2295E Blue

2295G Grey

2295H Navy

**MODENA** BLOUSE Semi fitted, Short sleeve **Sizes:** 6 - 24 regular



Codes & Colours:

2296A White

2296E Blue

2296G Grey

2296H Navy

# COTTON RICH

55% COTTON / 45% POLYESTER / 120gm EASY IRON - MATCHING STYLES

MEN'S **ALBA** Slim fit, Long sleeve



- Twin rear darts for defined silhouette
- Semi cutaway collar



A. White



D. Black



E. Blue



F. Lilac



G. Grey



H. Navy

**ALBA SHIRT**  
Slim fit, Single cuff

Sizes:  
14" - 18"



Codes & Colours:

- 7640A White
- 7640D Black
- 7640E Blue
- 7640F Lilac
- 7640G Grey
- 7640H Navy



HE WEARS  
**ALBA**  
SLIM FIT SHIRT

SHE WEARS  
**PARMA**  
SEMI FITTED BLOUSE



7640H  
ALBA

SLIM FIT  
SINGLE CUFF



7640A  
ALBA

# COTTON RICH

55% COTTON / 45% POLYESTER / 120gm EASY IRON - MATCHING STYLES

MEN'S **RAPINO** Classic fit, Long sleeve  
 MEN'S **ROSELLO** Classic fit, Short sleeve



- Chest pocket
- Single button cuff (Rapino)



A. White



D. Black



E. Blue



F. Lilac



G. Grey



H. Navy

**RAPINO SHIRT**  
 Classic fit, Single cuff



Sizes:  
 14.5" - 20"

Codes & Colours:  
 7539A White  
 7539D Black  
 7539E Blue  
 7539F Lilac  
 7539G Grey  
 7539H Navy

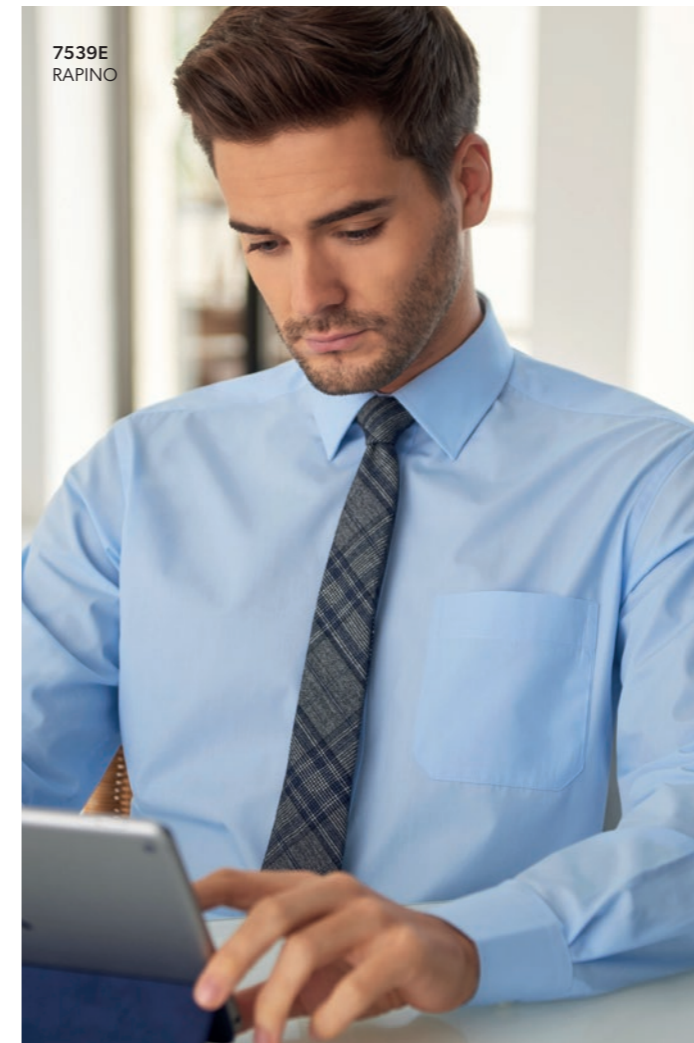
**ROSELLO SHIRT**  
 Classic fit, Short sleeve



Sizes:  
 14.5" - 20"

Codes & Colours:  
 7541A White  
 7541D Black  
 7541E Blue  
 7541F Lilac  
 7541G Grey  
 7541H Navy

6 COLOURS  
 IN BOTH  
 STYLES



7539E  
 RAPINO



7539D  
 RAPINO



7541G  
 ROSELLO



7541F  
 ROSELLO



2281A  
LUGANO  
2282A  
NAPOLI

## COTTON RICH

60% COTTON / 40% POLYESTER / 120gm EASY IRON - MATCHING STYLES

WOMEN'S **LUGANO** BLOUSE Semi fitted, Long sleeve  
WOMEN'S **NAPOLI** BLOUSE Semi fitted, Short sleeve

- Fly front
- Button up collar



B. Blue Houndstooth



A. Lilac Houndstooth



D. Black Houndstooth

**LUGANO** BLOUSE  
Semi fitted, Long sleeve

Sizes:  
6 - 24 regular



Codes & Colours:  
2281A Lilac Houndstooth  
2281B Blue Houndstooth  
2281D Black Houndstooth

**NAPOLI** BLOUSE  
Semi fitted, Short sleeve

Sizes:  
6 - 24 regular



Codes & Colours:  
2282A Lilac Houndstooth  
2282B Blue Houndstooth  
2282D Black Houndstooth



7755B  
MONZA



7755D  
MONZA

## COTTON RICH

60% COTTON / 40% POLYESTER / 120gm EASY IRON - MATCHING STYLES

MEN'S **MONZA** SHIRT Slim fit, Long sleeve

- Single 2 button cuff
- Twin rear darts for defined silhouette



B. Blue Houndstooth



A. Lilac Houndstooth



D. Black Houndstooth

**MONZA** SHIRT  
Slim fit, Long sleeve

Sizes:  
14" - 18"



Codes & Colours:  
7755A Lilac Houndstooth  
7755B Blue Houndstooth  
7755D Black Houndstooth

7542A  
ROCCELLA  
2217A  
PESCARA



2215B  
PERANO



7540C  
RUFINA



## COTTON RICH

60% COTTON / 40% POLYESTER / 120gm EASY IRON - MATCHING STYLES

WOMEN'S **PERANO** BLOUSE Semi fitted, Long sleeve  
WOMEN'S **PESCARA** BLOUSE Semi fitted, Short sleeve

- Single 2 button cuff (Perano)
- Short sleeve with adjustable cuff (Pescara)



A. White/Grey Stripe



B. Pink/Grey Stripe



C. Blue/White Stripe

**PERANO** BLOUSE  
Semi fitted, Long sleeve

Sizes:  
6 - 24 regular

Codes & Colours:  
2215A White/Grey Stripe  
2215B Pink/Grey Stripe  
2215C Blue/White Stripe



**PESCARA** BLOUSE  
Semi fitted, Short sleeve

Sizes:  
6 - 24 regular

Codes & Colours:  
2217A White/Grey Stripe  
2217B Pink/Grey Stripe  
2217C Blue/White Stripe



MEN'S **RUFINA** Classic fit, Long sleeve  
MEN'S **ROCCELLA** Classic fit, Short sleeve

- Chest pocket
- Single 2 button cuff (Rufina)



A. White/Grey Stripe



C. Blue/White Stripe

**RUFINA** SHIRT  
Classic fit, Long sleeve

Sizes:  
14.5" - 20"

Codes & Colours:  
7540A White/Grey Stripe  
7540C Blue/White Stripe



**ROCCELLA** SHIRT  
Classic fit, Short sleeve

Sizes:  
14.5" - 20"

Codes & Colours:  
7542A White/Grey Stripe  
7542C Blue/White Stripe



# COTTON RICH

60% COTTON / 40% POLYESTER / 120gm EASY IRON - MATCHING STYLES

WOMEN'S **CAMPANIA** BLOUSE Semi fitted, Long sleeve  
 WOMEN'S **LIGURIA** BLOUSE Semi fitted, Short sleeve

• Double button fastening



C. Black/White Stripe

**CAMPANIA BLOUSE**  
Semi fitted, Long sleeve

Sizes:  
6 - 24 regular

Codes & Colours:  
2239A White waffle weave  
2239C Black/White Stripe



A. White waffle weave

**LIGURIA BLOUSE**  
Semi fitted, Short sleeve

Sizes:  
6 - 24 regular

Codes & Colours:  
2240A White waffle weave  
2240C Black/White Stripe



MEN'S **MANTOVA** Classic fit, Long sleeve  
 MEN'S **SAVONA** Classic fit, Short sleeve

• Chest pocket  
 • Double button cuff (Mantova)



A. White waffle weave

**MANTOVA SHIRT**  
Classic fit, Long sleeve

Sizes:  
14.5" - 20"

Codes & Colours:  
7594A White waffle weave  
7594C Black/White Stripe



C. Black/White Stripe

**SAVONA SHIRT**  
Classic fit, Short sleeve

Sizes:  
14.5" - 20"

Codes & Colours:  
7595C Black/White Stripe



2240C  
LIGURIA



7594A  
MANTOVA



2240A  
LIGURIA



7594C  
MANTOVA

# OXFORD SHIRTS

IS THERE ANYTHING MORE TIMELESS THAN AN OXFORD SHIRT...

A staple of many wardrobes across the world, its reputation as a hard-wearing, versatile all-rounder is undeniable. Comfortable in a casual setting, sharp in a business environment, the Oxford is up there with the best of them. This dedicated collection offers three beautifully textured fabrics in a tailored fit.

NEW  
STYLES



## STRETCH OXFORD / Pages 46 - 53

- 2 Mix and match styles for men and women
- Available in 4 plain colours and 3 striped designs
- 97% Cotton, 3% Elastane
- 25% High level of stretch
- 170gsm fabric

NEW  
STYLE



## ROYAL OXFORD / Pages 54 - 59

- 1 new style available in 2 colours
- Mix & match with existing 4 Royal Oxford styles
- Available in up to 5 colours
- 60% Cotton, 40% Polyester
- 125gsm fabric

MATCHES  
EXISTING  
STYLES

NEW  
STYLES



## CLASSIC OXFORD / Pages 60 - 65

- 4 Mix and match styles for men and women
- Available in 2 colours
- 100% Cotton
- 135gsm fabric

STRETCH OXFORD



STRETCH OXFORD



CLASSIC OXFORD



ROYAL OXFORD

# STRETCH OXFORD



## FLEXIBLE ALL-ROUNDER

Beautifully designed, our new Stretch Oxford shirts add a touch of elegance to a smart uniform. Durability and stretch combine to guarantee a comfortable fit. Pair with a chino or tailored trouser to create your individual style.

<p><b>2</b> Mix &amp; Match Styles</p>	<p><b>Tailored Fit</b></p>	<p> 97% Cotton 3% Elastane</p>	<p> <b>STRETCH OXFORD WEAVE</b> Lightweight Fabric</p>	<p>Available in <b>7</b> colours 4 Plains &amp; 3 Stripes</p>	<p><b>← 25% →</b> High Level of Stretch</p>	<p> Machine Washable</p>	<p> Easy Iron</p>	<p><b>OEKO-TEX®</b> INSPIRING CONFIDENCE <b>STeP</b> Sustainable Textile Production <a href="http://www.oeko-tex.com/step">www.oeko-tex.com/step</a></p>
--	----------------------------	--	--	---	---	------------------------------	-----------------------	--



## LAWRENCE MEN'S TAILORED FIT

Long sleeve, Button-down collar.

Sizes:  
14" - 20"

- Codes & Colours:
- 4052A White
  - 4052B Navy
  - 4052C Navy Stripe
  - 4052D Sky Blue Stripe
  - 4052E Sky Blue
  - 4052F Silver Grey
  - 4052G Silver Grey Stripe



Stylish contrast collar

Modern patch label

Relaxed, button-down collar

High level of stretch

Tailored fit

Lightweight, easy iron fabric

Locker loop for added practicality

Contrast cuff trims

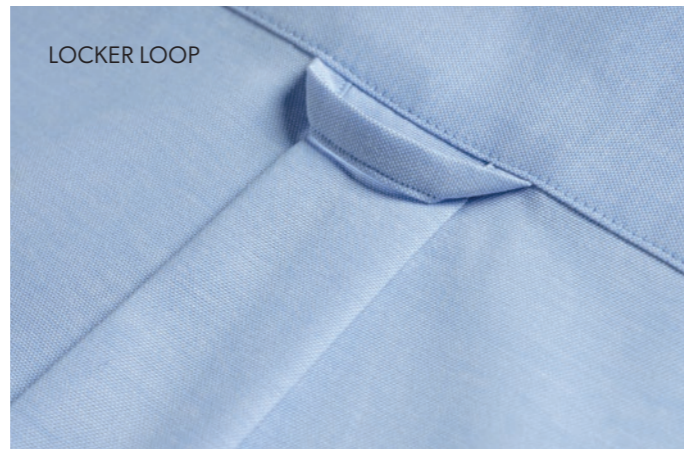
Sustainably produced

SIGNATURE CRAFTSMANSHIP IN EVERY SHIRT



# MEN'S - STRETCH OXFORD

NEW  
STYLES



LOCKER LOOP

## LAWRENCE MEN'S TAILORED FIT

Long sleeve, Button-down collar.

Sizes:  
14" - 20"

### Codes & Colours:

- 4052A White
- 4052B Navy
- 4052C Navy Stripe
- 4052D Sky Blue Stripe
- 4052E Sky Blue
- 4052F Silver Grey
- 4052G Silver Grey Stripe

← 25%  
STRETCH →



EASY  
IRON



## FLEXIBILITY & INDIVIDUALITY GUARANTEED

High stretch styles in 7 modern colourways - team up with our Casuals & Separates and suiting collections.

BROOK TAVERNER

STRETCH OXFORD



**MIRABEL**  
WOMEN'S TAILORED FIT  
Long sleeve, Cutaway collar.

Sizes:  
6 - 24 regular

- Codes & Colours:
- 2361A White
  - 2361B Navy
  - 2361C Navy Stripe
  - 2361D Sky Blue Stripe
  - 2361E Sky Blue
  - 2361F Silver Grey
  - 2361G Silver Grey Stripe



SMART IN EVERY DETAIL

# WOMEN'S - STRETCH OXFORD

NEW  
STYLES

**MIRABEL**  
WOMEN'S TAILORED FIT  
Long sleeve, Cutaway collar.

Sizes:  
6 - 24 regular

- Codes & Colours:
- 2361A White
  - 2361B Navy
  - 2361C Navy Stripe
  - 2361D Sky Blue Stripe
  - 2361E Sky Blue
  - 2361F Silver Grey
  - 2361G Silver Grey Stripe

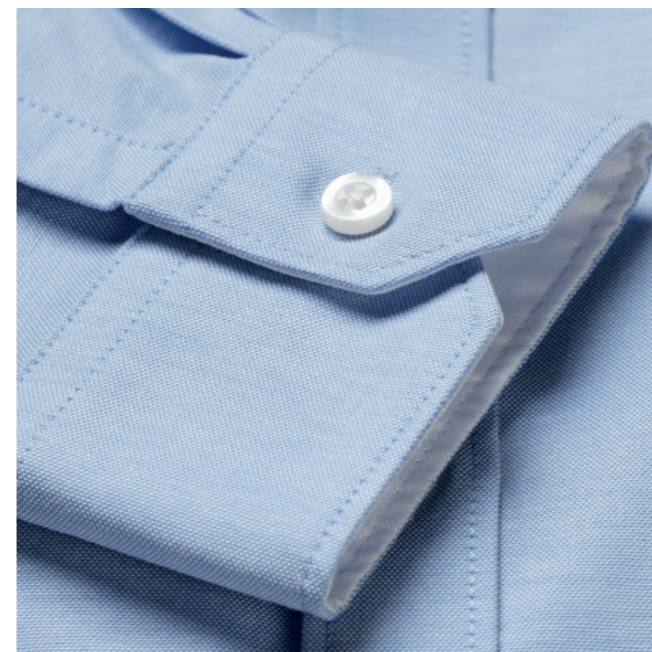
← 25%  
STRETCH →

EASY  
IRON



## A LITTLE TEXTURE, A LOT OF STRETCH

Cotton rich styles with added stretch promising the perfect fit and astonishing comfort.



# ROYAL OXFORD



## MEN'S - ROYAL OXFORD

### WELCOME TO THE FAMILY

Joining a family of firm favourites, the Tofino Royal Oxford shirt is suited to a wide variety of hospitality and business situations and complements our Toronto and Calgary styles perfectly.

<p>60% Cotton 40% Polyester</p>	<p>125gsm <b>ROYAL OXFORD WEAVE</b> Lightweight Fabric</p>	<p>Available in</p> <p><b>2</b> colours</p>	<p>40° Machine Washable</p>	<p>Easy Iron</p>	<p>OEKO-TEX® CONFIDENCE IN TEXTILES <b>STANDARD 100</b> DEUTSCHES INSTITUT FÜR UMWELT UND ARBEITSSCHUTZ Sucht für harmful substances www.oeko-tex.com/standard100</p> <p>OEKO-TEX® INSPIRING CONFIDENCE <b>SteP</b> Sustainable Textile Production www.oeko-tex.com/step</p>
-------------------------------------	--	---	---------------------------------	------------------	--

### TOFINO MEN'S TAILORED FIT Long sleeve, Classic collar

Sizes:  
14" - 20"

Codes & Colours:  
4043A White  
4043E Sky Blue



A. White



Contrast detailing

Easy iron

Tailored fit

Sustainably produced

Classic collar

Matches existing Toronto and Calgary shirts

Modern French placket

E. Sky Blue

NEW - CLASSIC COLLAR



# MEN'S - ROYAL OXFORD

60% COTTON / 40% POLYESTER / 125gm EASY IRON - MATCHING STYLES

MEN'S **TORONTO** Tailored fit, Long sleeve

MEN'S **CALGARY** Tailored fit, Short sleeve

- Tailored fit
- Button down collar
- French placket
- Contrast detailing



A. White



B. Blue



C. Grey



E. Sky Blue



F. Red

## TORONTO SHIRT

Tailored fit, Long sleeve

Sizes:  
14" - 22"\*  
\*Size 21" & 22" available in  
White and Sky Blue only

Codes & Colours:  
7882A White  
7882B Blue  
7882C Grey  
7882E Sky Blue  
7882F Red



## CALGARY SHIRT

Tailored fit, Short sleeve

Sizes:  
14" - 22"\*  
\*Size 21" & 22" available in  
White and Sky Blue only

Codes & Colours:  
7883A White  
7883B Blue  
7883C Grey  
7883E Sky Blue  
7883F Red



7882B  
TORONTO



7882E  
TORONTO



7882C  
TORONTO



7883A  
CALGARY



2319F  
ASPEN



2319B  
ASPEN



2320A  
VICTORIA



2320C  
VICTORIA

# WOMEN'S - ROYAL OXFORD

60% COTTON / 40% POLYESTER / 125gm EASY IRON - MATCHING STYLES

WOMEN'S **ASPEN** Tailored fit, Long sleeve  
WOMEN'S **VICTORIA** Tailored fit, Short sleeve

- Tailored fit
- French placket
- Contrast detailing



A. White

B. Blue

C. Grey



E. Sky Blue



F. Red

**ASPEN SHIRT**  
Tailored fit, Long sleeve

Sizes:  
6 - 26\* regular  
\*Size 26 available in  
White and Sky Blue only

Codes & Colours:  
2319A White  
2319B Blue  
2319C Grey  
2319E Sky Blue  
2319F Red



**VICTORIA SHIRT**  
Tailored fit, Short sleeve

Sizes:  
6 - 26\* regular  
\*Size 26 available in  
White and Sky Blue only

Codes & Colours:  
2320A White  
2320B Blue  
2320C Grey  
2320E Sky Blue  
2320F Red



# CLASSIC OXFORD



100% Cotton

## THE NATURAL EVERYDAY CHOICE

Natural cotton fibres consciously chosen and densely woven - soft feel, high performance guaranteed. Classic white and sky blue colourways.

<p><b>4</b> Mix &amp; Match Styles</p>	<p><b>Tailored Fit</b></p>	<p> 100% Cotton</p>	<p> 135gsm <b>CLASSIC OXFORD WEAVE</b> Lightweight Fabric</p>	<p>Available in <b>2</b> colours</p>	<p> 40°C Machine Washable</p>	<p> Easy Iron</p>	<p><b>OEKO-TEX®</b> INSPIRING CONFIDENCE <b>STeP</b> Sustainable Textile Production. <a href="http://www.oeko-tex.com/step">www.oeko-tex.com/step</a></p>
--	----------------------------	---------------------	---	--------------------------------------	-----------------------------------	-------------------	---



# MEN'S - CLASSIC OXFORD TAILORED FIT SHIRTS

**WHISTLER**  
MEN'S TAILORED FIT  
Long sleeve, Button-down collar, Box pleat, Chest pocket.

Sizes: 14" - 22"

Codes & Colours:  
4050A White  
4050E Sky Blue

**TUCSON**  
MEN'S TAILORED FIT  
Short sleeve, Button-down collar, Box pleat, Chest pocket.

Sizes: 14" - 22"

Codes & Colours:  
4051A White  
4051E Sky Blue



# WOMEN'S - CLASSIC OXFORD TAILORED FIT SHIRTS

NEW  
STYLES

**ALBANY**  
WOMEN'S TAILORED FIT  
Long sleeve, Classic collar.

Sizes:  
6 - 26 regular

Codes & Colours:  
2359A White  
2359E Sky Blue

**HAMILTON**  
WOMEN'S TAILORED FIT  
Short sleeve, Classic collar.

Sizes:  
6 - 26 regular

Codes & Colours:  
2360A White  
2360E Sky Blue



100%  
COTTON



EASY  
IRON



START WITH  
THE SHIRT &  
THE REST WILL  
FOLLOW





# CLASSIC OXFORD TAILORED FIT SHIRTS

## WHISTLER

MEN'S TAILORED FIT  
Long sleeve, Button-down collar,  
Box pleat, Chest pocket.

Sizes:  
14" - 22"

Codes & Colours:  
4050A White  
4050E Sky Blue



A. White

## TUCSON

MEN'S TAILORED FIT  
Short sleeve, Button-down collar,  
Box pleat, Chest pocket.

Sizes:  
14" - 22"

Codes & Colours:  
4051A White  
4051E Sky Blue



E. Sky Blue

## ALBANY

WOMEN'S TAILORED FIT  
Long sleeve, Classic collar.

Sizes:  
6 - 26 regular

Codes & Colours:  
2359A White  
2359E Sky Blue



E. Sky Blue

## HAMILTON

WOMEN'S TAILORED FIT  
Short sleeve, Classic collar.

Sizes:  
6 - 26 regular

Codes & Colours:  
2360A White  
2360E Sky Blue



A. White

- 4**  
Mix & Match  
Styles
- Tailored Fit**
-   
100% Cotton
-   
135gsm  
**CLASSIC OXFORD WEAVE**  
Lightweight Fabric
- Available in  
**2**  
colours
-   
40°  
Machine Washable
-   
Easy Iron
- OEKO-TEX®**  
INSPIRING CONFIDENCE  
**STeP**  
Sustainable Textile Production  
[www.oeko-tex.com/step](http://www.oeko-tex.com/step)



## FUNCTIONAL FAVOURITE

For long days on your feet or challenging customer-facing environments, the Classic Oxford is a reliable performer. Tailored for comfort, it helps to get the job done.



2322A  
TULSA



2321C  
KANSAS



2321B  
KANSAS

# WOMEN'S GINGHAM / BUSINESS CASUAL

60% COTTON / 40% POLYESTER / 125gm EASY IRON - MATCHING STYLES

WOMEN'S **KANSAS** Tailored fit, Long sleeve

- Tailored fit
- Long sleeve
- Bias cut detailing
- Contrast thread detail



A. Blue Gingham



B. Brown Gingham



C. Red Gingham

WOMEN'S **TULSA** Tailored fit, Short sleeve

- Tailored fit
- Short sleeve
- Bias cut detailing
- Contrast thread detail



A. Blue Gingham



B. Brown Gingham



C. Red Gingham

**KANSAS SHIRT**  
Tailored fit, Long sleeve

Sizes:  
6 - 24 regular

Codes & Colours:  
2321A Blue Gingham  
2321B Brown Gingham  
2321C Red Gingham



**TULSA SHIRT**  
Tailored fit, Short sleeve

Sizes:  
6 - 24 regular

Codes & Colours:  
2322A Blue Gingham  
2322B Brown Gingham  
2322C Red Gingham



# MEN'S GINGHAM / BUSINESS CASUAL

60% COTTON / 40% POLYESTER / 125gm EASY IRON - MATCHING STYLES

MEN'S **MONTANA** Tailored fit, Long sleeve

- Tailored fit
- Long sleeve
- Bias cut detailing
- Chest pocket
- Contrast thread detail



A. Blue Gingham



B. Brown Gingham



C. Red Gingham



7884B  
MONTANA



7885C  
PORTLAND

MEN'S **PORTLAND** Tailored fit, Short sleeve

- Tailored fit
- Short sleeve
- Bias cut detailing
- Chest pocket
- Contrast thread detail



A. Blue Gingham



B. Brown Gingham



C. Red Gingham



7884A, B, C  
MONTANA

**MONTANA SHIRT**  
Tailored fit, Long sleeve

Sizes:  
14" - 20"

Codes & Colours:  
7884A Blue Gingham  
7884B Brown Gingham  
7884C Red Gingham



**PORTLAND SHIRT**  
Tailored fit, Short sleeve

Sizes:  
14" - 20"

Codes & Colours:  
7885A Blue Gingham  
7885B Brown Gingham  
7885C Red Gingham





# CHAMBRAY SHIRTS / BUSINESS CASUAL

100% COTTON / 140gm EASY IRON - MATCHING STYLES

MEN'S **JASPER** Tailored fit, Long sleeve

WOMEN'S **BANFF** Tailored fit, Long sleeve

- Tailored fit
- Chest pocket with button (Jasper)
- Faux horn buttons
- Contrast button detailing



A. Denim



A. Denim



7886A  
JASPER



2323A  
BANFF

**JASPER SHIRT**  
Tailored fit, Long sleeve

Sizes:  
14" - 20"

Codes & Colours:  
7886A Denim



**BANFF SHIRT**  
Tailored fit, Long sleeve

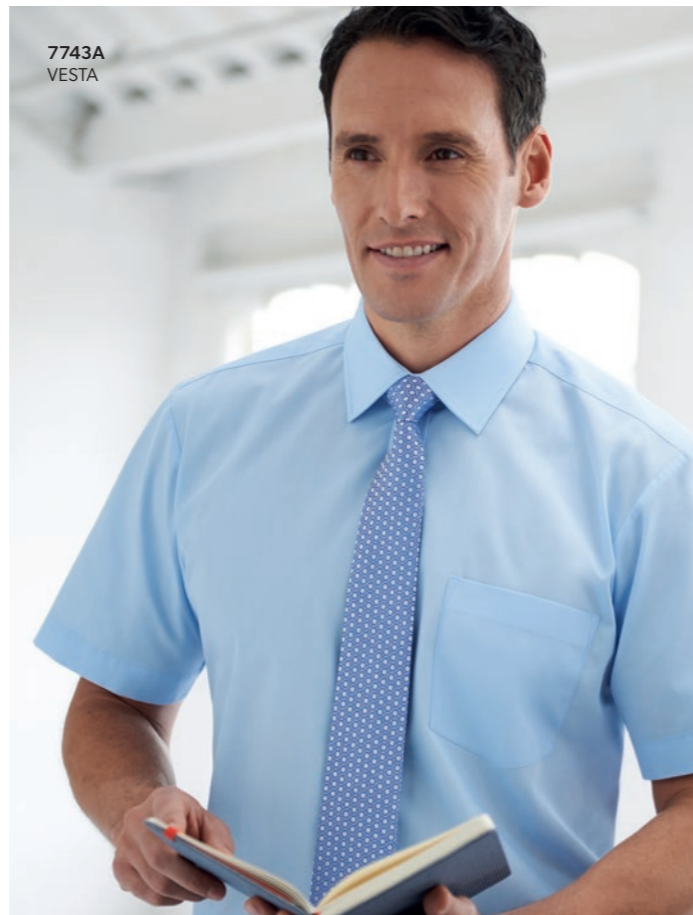
Sizes:  
6 - 24 regular

Codes & Colours:  
2323A Denim





7742A  
JUNO



7743A  
VESTA

## BUSINESS ESSENTIALS

65% POLYESTER / 35% COTTON / 115gm MATCHING STYLES

MEN'S **JUNO** Classic fit, Long sleeve

MEN'S **VESTA** Classic fit, Short sleeve

- 2 Button cuff (Juno)
- Chest pocket
- Classic fit available up to collar size 22"
- Machine washable at 40°

### CLASSIC FIT

AVAILABLE UP TO SIZE 22"



A. White

**JUNO SHIRT**  
Classic fit, Long sleeve

Sizes:  
14.5" - 22"

Codes & Colours:  
7742A White  
7742B Blue



B. Blue

**VESTA SHIRT**  
Classic fit, Short sleeve

Sizes:  
14.5" - 22"

Codes & Colours:  
7743A White  
7743B Blue



7889A  
VULCAN

## BUSINESS ESSENTIALS

65% POLYESTER / 35% COTTON / 115gm MATCHING STYLES

MEN'S **VULCAN** Slim fit, Long sleeve

- 2 Button cuff
- Slim fit available up to collar size 18"
- Machine washable at 40°

### SLIM FIT

AVAILABLE UP TO SIZE 18"



A. White



**VULCAN SHIRT**  
Slim fit, Long sleeve

Sizes:  
14" - 18"

Codes & Colours:  
7889A White



2270A  
SELENE

## BUSINESS ESSENTIALS

65% POLYESTER / 35% COTTON / 115gm MATCHING STYLES

WOMEN'S **SELENE** BLOUSE Semi fitted, Long sleeve

WOMEN'S **EOS** BLOUSE Semi fitted, Short sleeve

- 2 Button cuff (Selene)
- Large size range 4R - 30R
- Machine washable at 40°

Sizes: 4 - 30 regular



A. White



B. Blue

**SELENE** BLOUSE  
Semi fitted, Long sleeve

Sizes:  
4 - 30 regular

Codes & Colours:  
2270A White  
2270B Blue



**EOS** BLOUSE  
Semi fitted, Short sleeve

Sizes:  
4 - 30 regular

Codes & Colours:  
2271A White  
2271B Blue



**SEMI FITTED**

AVAILABLE UP TO SIZE 30R



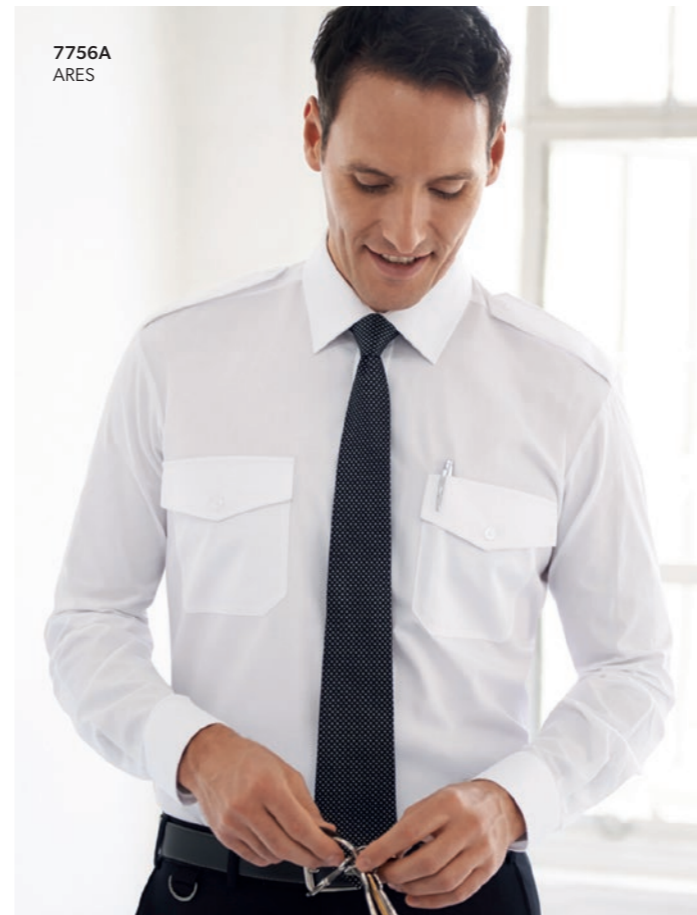
2271B  
EOS



7745A  
HERMES



7746A  
OLYMPUS



7756A  
ARES



7842A  
ORION

## BUSINESS ESSENTIALS / PILOT SHIRTS

65% POLYESTER / 35% COTTON - PILOT SHIRTS / 115gm

MEN'S **HERMES** Classic fit, Long sleeve pilot shirt  
 MEN'S **OLYMPUS** Classic fit, Short sleeve pilot shirt

- 2 Button cuff (Hermes)
- Twin chest pockets with flap
- Pen holder
- Epaulettes
- Classic fit available up to collar size 22"
- Machine washable at 40°



A. White

**HERMES PILOT SHIRT**  
 Classic fit, Long sleeve

Sizes:  
 14.5" - 22"

Codes & Colours:  
 7745A White



A. White

**OLYMPUS PILOT SHIRT**  
 Classic fit, Short sleeve

Sizes:  
 14.5" - 22"

Codes & Colours:  
 7746A White



## BUSINESS ESSENTIALS / PILOT SHIRTS

65% POLYESTER / 35% COTTON - PILOT SHIRTS / 115gm

MEN'S **ARES** Slim fit, Long sleeve pilot shirt  
 MEN'S **ORION** Slim fit, Short sleeve pilot shirt

- 2 Button cuff (Ares)
- Twin chest pockets with flap
- Pen holder
- Epaulettes
- Slim fit available up to collar size 18"
- Machine washable at 40°



A. White

**ARES PILOT SHIRT**  
 Slim fit, Long sleeve

Sizes:  
 14" - 18"

Codes & Colours:  
 7756A White



A. White

**ORION PILOT SHIRT**  
 Slim fit, Short sleeve

Sizes:  
 14" - 18"

Codes & Colours:  
 7824A White





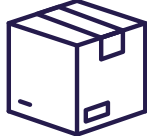


### CLASSIC FIT







AVAILABLE UP TO SIZE 22"

### SLIM FIT

AVAILABLE UP TO SIZE 18"

<p>SINCE 1912</p> <p><b>110</b></p> <p>Years in business</p>	 <p><b>£10.3m+</b></p> <p>Value of stock held</p>	 <p><b>180,000</b></p> <p>Sq ft office and warehouse complex</p>
 <p><b>850,000</b></p> <p>Garments in stock</p>	 <p><b>17,400</b></p> <p>Individual SKU's in stock</p>	 <p><b>6,000</b></p> <p>Garments processed and shipped daily</p>

Brook Taverner is committed to operating a responsible, environmentally respectful and sustainable business, so you can be confident that not only will your team look good, they will feel good too.

 <p><b>20%</b></p> <p>Increase in packing efficiency</p>	 <p><b>66%</b></p> <p>Minimum recycled cardboard used in packaging</p>	 <p><b>100%</b></p> <p>Recyclable materials used in packaging</p>
 <p><b>0</b></p> <p>Harmful chemicals added to fabrics</p>	 <p><b>100%</b></p> <p>Transparent &amp; environmentally respectful supply chain</p>	 <p><b>100%</b></p> <p>Commitment to sustainability</p>

We endeavour to continuously improve our environmental performance where possible and are proud to work with partners who share our views and values.