

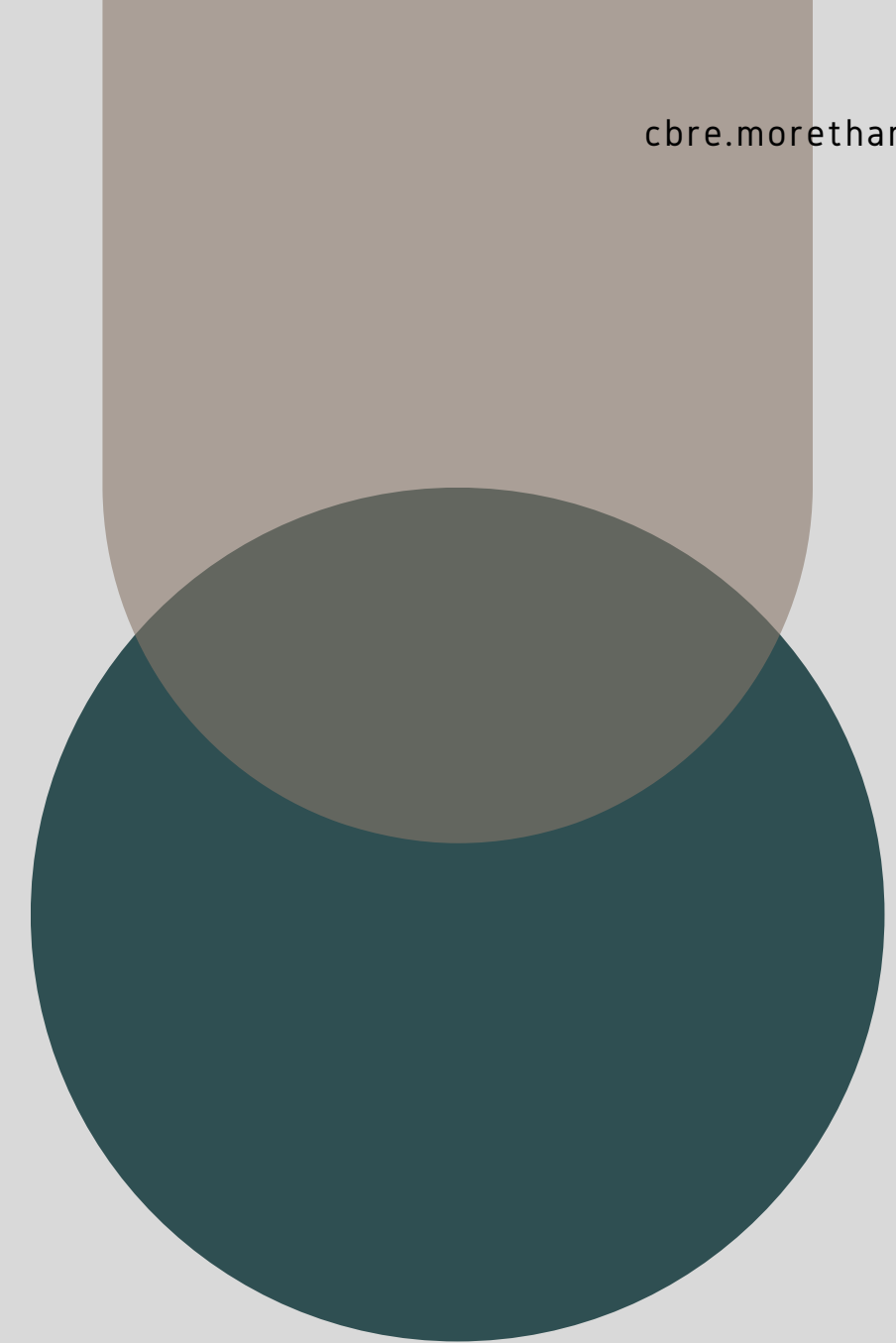


Corporate Clothing Guide



Contents

- Women's Polos
- Women's Blouses
- Women's Waistcoats
- Women's Knitwear
- Women's Jackets
- Women's Trousers
- Women's Skirts
- Women's Dresses
- Men's Shirts
- Men's Polos
- Men's Knitwear
- Men's Waistcoats
- Men's Jackets
- Accessories



morethansafety

WOMEN'S PREMIUM COTTON POLOS

Arlington polo

Women's Short Sleeve
Polo

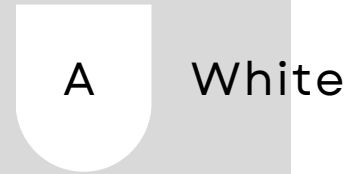


Sizes:

XS 4-6
S 8
M 10-12
L 14
XL 16-18
2XL 20
3XL 22 -24

- 4 button placket
- ribbed short sleeve cuff
- 2 side splits
- tailored fit
- cotton rich high stretch

Available Colours:



A White



B Navy



C Grey Marl



D Black



E Sky Marl



A

B

C

D

E

After care



Breathable
Fabric



Durability



High Level
Of Stretch



Feeling Fresh



230gsm
Midweight
Fabric



Easy Care



95% Cotton
5% Elastane

morethansafety

WOMEN'S PREMIUM COTTON POLOS

Anna polo

Women's Long Sleeve
Polo

Sizes:

- XS 4-6
- S 8
- M 10-12
- L 14
- XL 16-18
- 2XL 20
- 3XL 22 -24



After care



Breathable
Fabric



Durability



High Level
Of Stretch



Feeling Fresh



230gsm
Midweight
Fabric



Easy Care



95% Cotton
5% Elastane



4 button placket

Tailored fit

2 side splits

Ribbed long sleeve cuff

Cotton rich high stretch

Available Colours:



Navy



Grey Marl



White



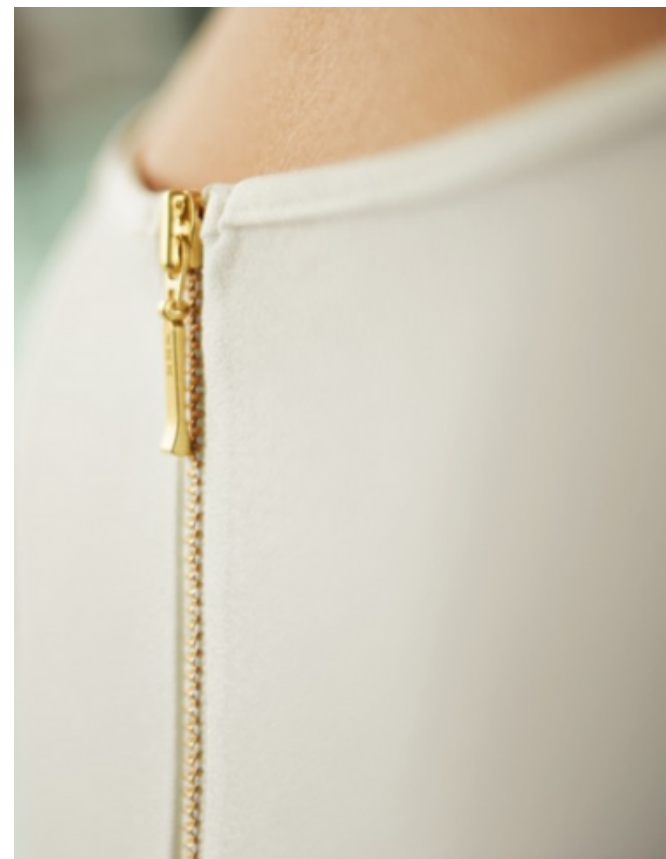
Sky Marl



Black

Riola crepe de chine Blouse

Long Sleeve
Women's Blouse



Sizes:
6-30 regular

- Round neck
- Front pleat detail
- Bust dart
- Single gold button cuff
- Rear gold zip detail
- 94% Polyester, 6% Elastane



Easy Care

● Available Colours:



Cream



White



Felina crepe de chine Blouse

Short Sleeve
Women's Blouse



- Round neck
- Front pleat detail
- Bust dart
- Rear gold zip detail
- 94% Polyester, 6% Elastane



Easy Care



White



Cream

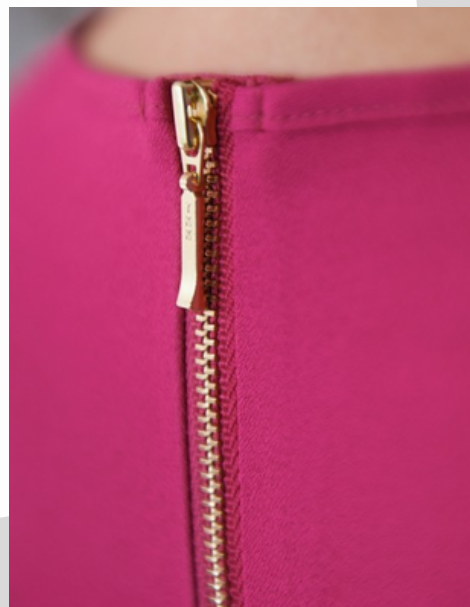
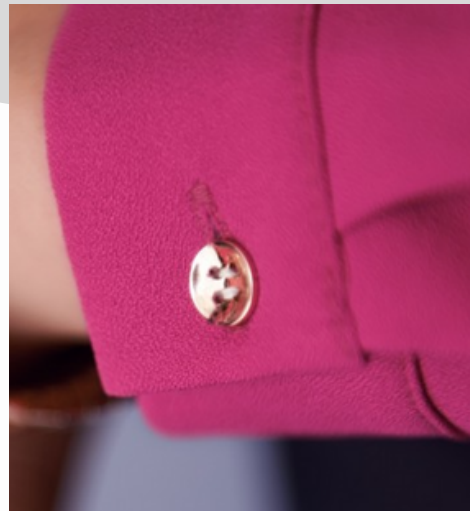


**Available
Colours:**

Sizes:
6-30 regular

Roma crepe de chine Blouse

Long Sleeve
Women's Blouse



- Round neck
- Front pleat detail
- Bust dart
- Single gold button cuff
- Rear gold zip detail
- Semi fitted
- 100% Polyester



Easy Care

Available Colours:

Fucshia Sky Blue Burgandy Black Royal Blue Navy



Sizes:
6-30 regular

morethansafety

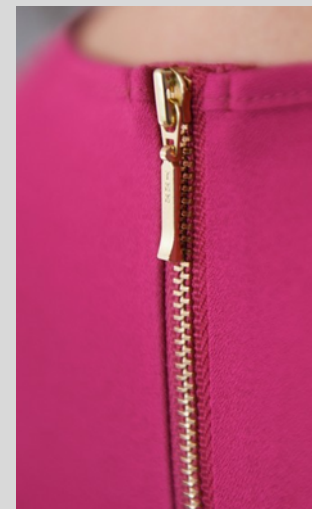
WOMEN'S BLOUSES

Verona crepe de chine Blouse

Short Sleeve
Women's Blouse



Sizes:
6-30 regular



Easy Care

Available Colours:

Fucshia Sky Blue Burgandy Black Royal Blue Navy



Burg/Print Sky/ Print Blk/Print Roy/Print



- Round neck
- Front pleat detail
- Bust dart
- Rear gold zip detail
- Semi fitted
- 100% Polyester

Andria Pussy Bow Blouse



Sizes:
6-26 regular



Easy Care



Front tie bow detail

- Tie front
- V neck
- Double ply fabric front & back
- Elasticated cuff
- 96% Polyester, 4% Elastane



Easy Care



Lightweight
125glm

Available Colours:

White

Sky Blue

Nude

Black



Flavia Pussy Bow Blouse



Front tie bow detail

96% Polyester,
4% Elastane

Sizes:
6-26 regular



Easy Care



Lightweight
125g/m

- Tie front
- V neck
- Double ply fabric front & back
- Single ply fabric sleeve

Available Colours:

White

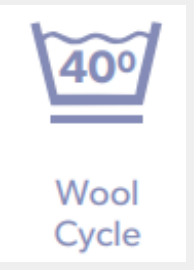
Sky Blue

Nude

Black



Parma Blouse







- Semi fitted
- Long sleeve, fly front
- Button up collar
- Single button cuff
- 55% Cotton, 45% Polyester
- Easy iron, poplin weave



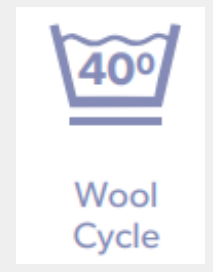
Sizes:
6-26 regular

Available Colours:

-  Blue
-  White
-  Grey
-  Navy



Palena Blouse



- Semi fitted
- Long sleeve
- Single 2 button cuff
- 55% Cotton, 45% Polyester
- Easy iron, poplin weave







Sizes:

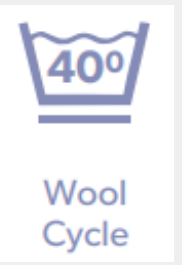
4 - 30 Regular

(Black) available from size
6 - 24

Available Colours:

-  Lilac
-  White
-  Blue
-  Black

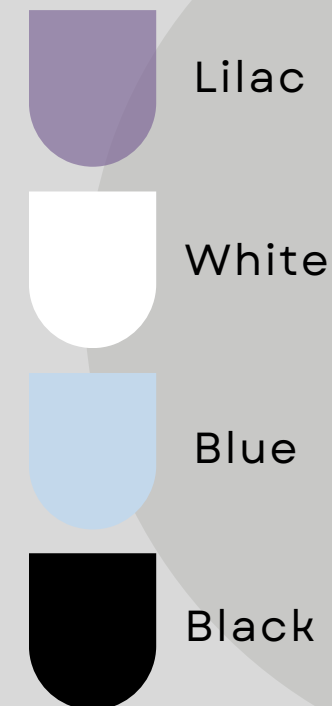




Paduli Blouse

- Semi fitted
- Short sleeve, Adjustable cuff
- 55% Cotton, 45% Polyester
- Easy iron, poplin weave

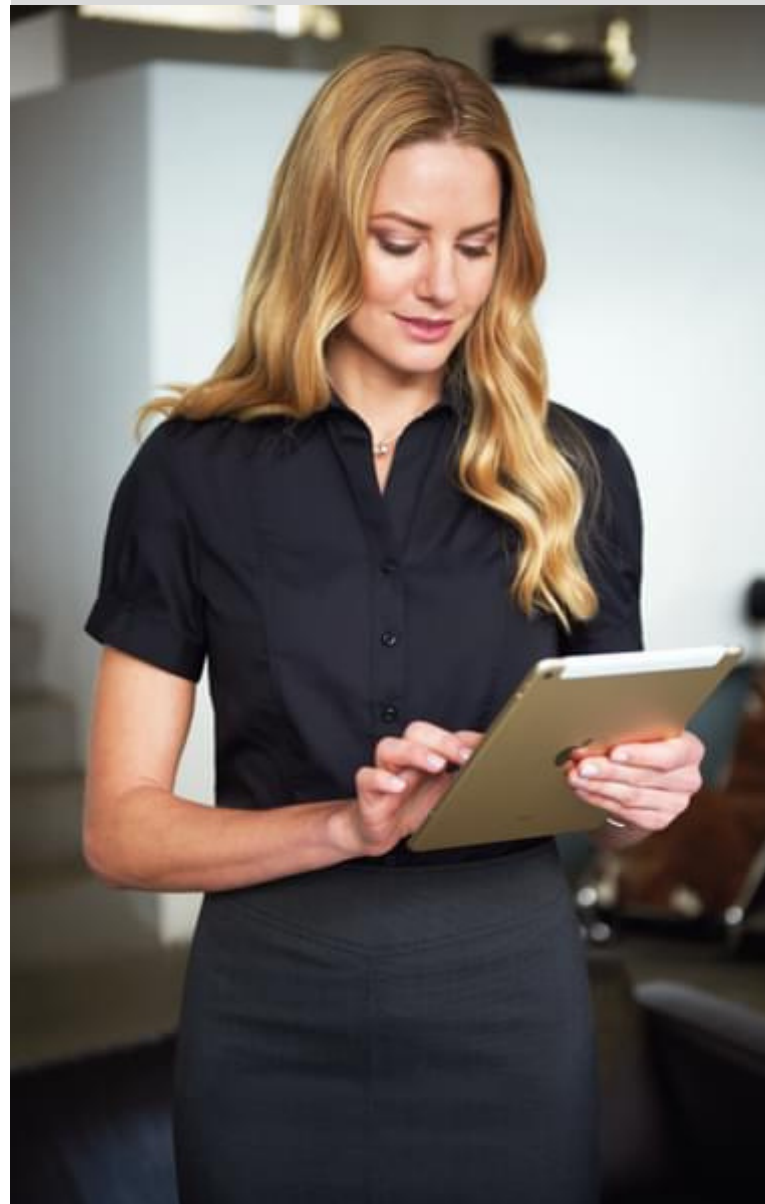
Available Colours:



Sizes:

4 - 30 Regular

(Black)
available from
size 6 - 24





Modena Blouse





- Semi fitted
- Short sleeve, fly front
- Button up collar
- Single button cuff
- 55% Cotton, 45% Polyester
- Easy iron, poplin weave



Sizes:
6-26 regular

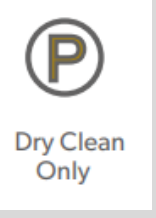


Available Colours:

-  Blue
-  White
-  Grey
-  Navy



Oliva



2 welt pockets

5 button front

Tailored fit



Sizes:

- XS 4 - 6
- S 8 - 10
- M 12 - 14
- L 16 - 18
- XL 20 - 22
- Centre back length at size M = 51.5cm
- 2XL 24 - 26



Part lining back with adjuster

64% Polyester, 34% Viscose, 2% Lycra

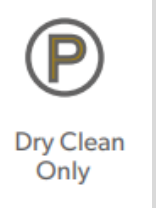
Available Colours:

- A- Navy
- B-Grey Check
- C-Green Check



Nashville

40% Wool, 40% Polyester 20% Mixed fibres with Teflon finish



High Level of Stain Resistance

Cloth back with vent detail and adjuster

5 button front

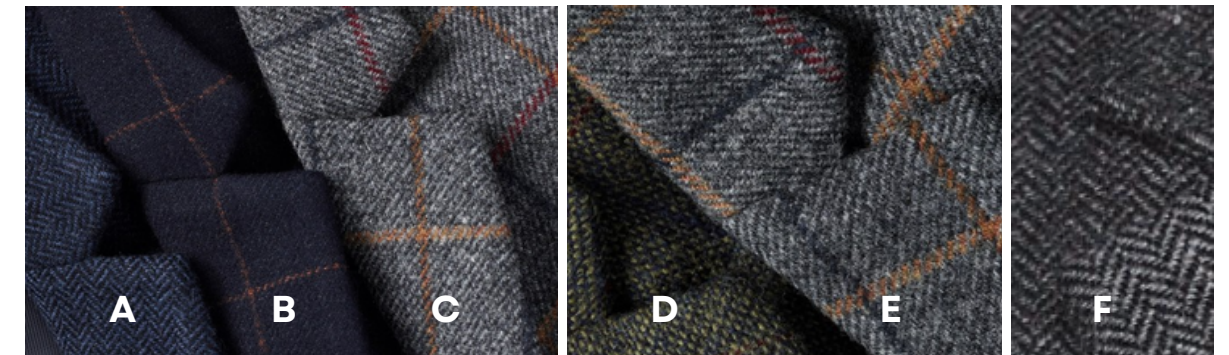
2 welt pockets

Available Colours:

- A- Navy H/B
- B - Navy Check
- C- Charc/ Pink
- D-Green/Blue
- E- Grey/ Brown
- F- Charc H/B

Sizes:

XS 4 - 6 S 8 - 10 M 12 - 14 L 16 - 18 XL 20 - 22
2XL 24 - 26



Atlanta & Augusta



Atlanta V neck jumper

- V-neck
- Ribbed neck
- Tubular cuff and hem
- Contrast inner neck strip
- 60% Cotton / 40% Acrylic - 12 Gauge Knit



Augusta V neck cardigan

- V-neck
- Ribbed placket, hem and cuff,
- Contrast inner neck strip
- 60% Cotton / 40% Acrylic - 12 Gauge Knit

Available Colours:

Sizes:

- 6XS (4/6)
- S (8)
- M (10/12)
- L (14)
- XL (16/18)
- 2XL (20)
- 3XL (22/24)

-  Light Blue
-  Royal Blue
-  Navy
-  Fuchsia
-  Charcoal
-  Black



Seattle Cardigan



Contrast inner neck strip

Crew neck

Ribbed neck & placket

Tubular cuff and hem



Easy Care

Sizes:

- 6XS (4/6)
- S (8)
- M (10/12)
- L (14)
- XL (16/18)
- 2XL (20)
- 3XL (22/24)

Available Colours:

- Light Blue
- Royal Blue
- Navy
- Fuchsia
- Charcoal
- Black



Connaught Classic Fit Jacket



- 2 button, notch lapel
- 1 inside pocket,
- Centre vent



Available Colours:

- A- Navy C- Black
- B- Charcoal D- Mid Grey



Sizes:

- 6 - 18 short
- 6 - 30* regular
- 8 - 24 long

*Mid Grey available to 24R only. Centre back length at size 12R = 65.5cm

Ariel Slim Fit Jacket



Sizes:

- 6-16 - petite
- 4-24 - regular
- 6-16 - long

- Short, 'slim fit',
- 1 button jacket, notch lapel
- Centre vent

Available Colours:

- A- Navy Pin Dot C- Charcoal Pin Dot
- B- Navy D- Black



Vega Jacket



- Tailored fit
- Collarless styling with curved splits
- 2 internal jet pockets
- Curved front/back seams
- 64% Polyester, 34% Viscose, 2% Lycra

Sizes:

6-16 - petite

4-24 - regular

6-16 - long

Centre back length at

size 12R = 50cm

Available Colours:

A-Navy Pin Dot

C- Charcoal Pin Dot

B-Navy

D- Black



WOMEN'S TROUSERS

Grosvenor Straight Leg Trouser



- Straight leg trouser
- single button front fastening key card pocket
- half lined belt loops.
- Half hem width at size 12 = 22cm
- 65% Polyester, 35% Woo

Sizes:

6-30* - waist in leg
lengths 27" 29",
31", 33" & 36"
unfinished

A B C D

Available Colours:

- A-Navy**
- B-Charcoal**
- C- Black**
- D- Mid Grey**

Bianca Trouser Tailored Leg



Easy Care

- Side pockets
- Mock hip pockets
- Straight leg
- 64% Recycled Polyester, 34% Viscose, 2% Lycra

Sizes:

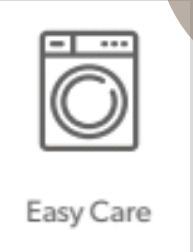
6-30* - waist in leg
lengths 27" 29",
31", 33" & 36"
unfinished



A B C D

Available Colours:

- A-Navy Pin Dot**
- B-Navy**
- C- Charcoal Pin Dot**
- D- Black**



Houston Slim Leg Chinos

Sizes:

6-30* - waist in leg lengths 27" 29", 31", 33" & 36" unfinished



- Straight leg trouser
- single button front fastening key card pocket
- half lined belt loops.
- Half hem width at size 12 = 22cm
- 65% Polyester, 35% Woo

Available Colours:

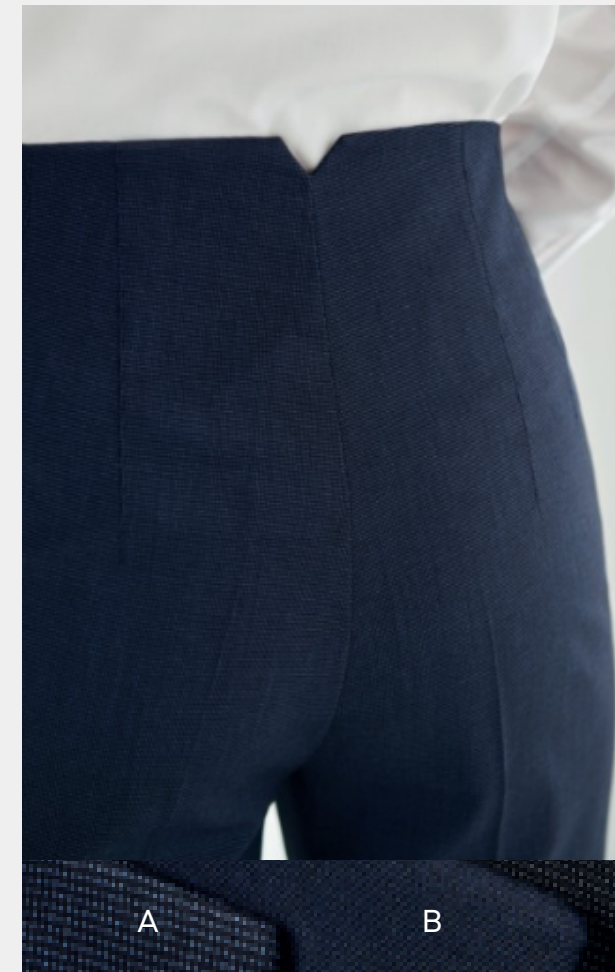
- A**-Navy
- B**-Beige
- C**- Grey
- D**-Black
- E**- Olive
- F**- Royal
- G**-Tan

Rosalind High Waist Trouser

- Grown on waistband
- Zip fastening with hook & bar
- 2 side pockets with welt openings
- 4 darts front and back
- 64% Recycled Polyester, 34% Viscose, 2% Lycra

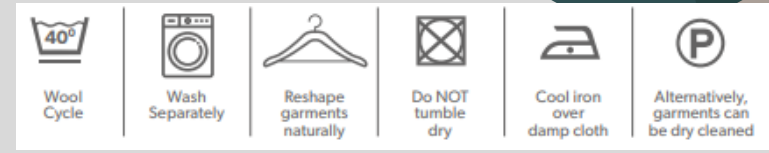
Sizes:

6-30* - waist in leg lengths 27" 29", 31", 33" & 36" unfinished



Available Colours:

- A**-Navy Pin Dot
- B**-Navy
- C**- Charcoal Pin Dot
- D**- Black



Stella Check Trousers

- Slim leg, front hook fastening
- 2 side pockets
- Mock hip pockets
- Feature jogger waist
- 64% Polyester, 34% Viscose, 2% Lycra



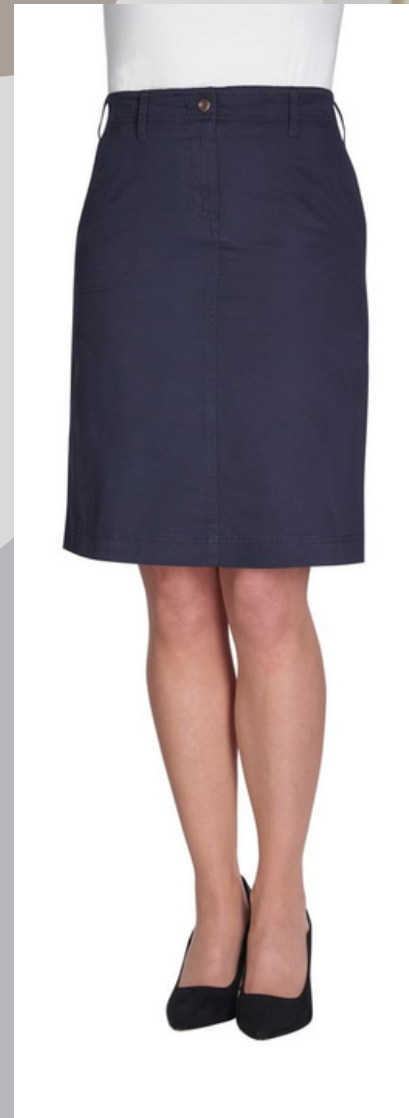
Available Colours:

- A- Navy Check
- B- Grey Check

Sizes:
6-30* - waist in leg
lengths 27" 29",
31", 33" & 36"
unfinished

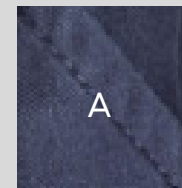


Austin Chino Skirt



- Belt loops
- Side pockets
- Twin hip jett pockets
- 97% Cotton, 3% Elastane

Available Colours:



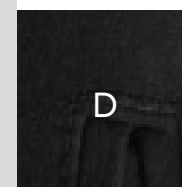
A - Navy



B - Beige



C - Grey



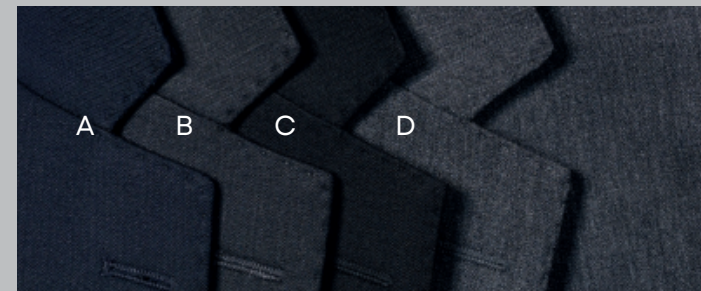
D - Black

Wyndham Straight Skirt



Available Colours:

- A**-Navy **C**- Black
- B**-Charcoal **D**- Mid Grey



- Straight skirt
- Centre vent
- Shaped back panels, full stretch lining
- 64% Recycled Polyester, 34% Wool, 2% Lycra

Sizes:
6 - 24 regular
- 22" 8 - 18
long - 25"

Sizes:
Sizes: 6 - 24
regular - 22" 8 -
18 long - 25"

*Colour G (Mid-Grey) only available up to size 24.

Juliet Straight Skirt



Sizes:
4 - 24 regular - 22" 8
- 30 long - 25"

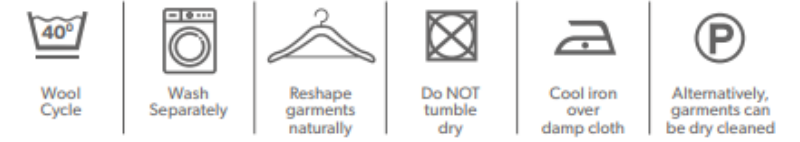


Available Colours :

- A- Navy Pin Dot
- B- Navy
- C- Charcoal Pin Dot
- D- Black



- Straight skirt
- Rear panel detail with centre vent
- Full stretch lining
- 64% Polyester, 34% Viscose, 2% Lycra



Leona Jersey Stretch Skirt

- Pull on straight skirt
- 67% Viscose, 29% Polyamide, 4% Elastane



Available Colours:

- Navy
- Black



Sizes:
6 - 14 short
6 - 24 regular
Length at size 12S = 20"
(51cm)
Length at size 12R = 22"
(56cm)

Celeste Jersey Stretch Dress

67% Viscose, 29% Polyamide, 4% Elastane

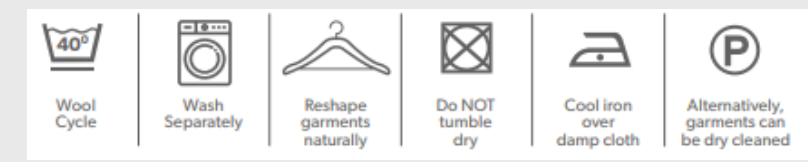


Sizes:
6 - 24 regular

Centre back length at size 12R = 99.5cm

Available Colours:

-  White
-  Grey
-  Navy



Portia Dress

- Short sleeve
- Centre back vent Waistline darts
- 64% Recycled Polyester, 34% Viscose, 2% Lycra



Sizes:
4 - 24 Regular
8 - 20 Long

Centre back length at size 12R = 97cm

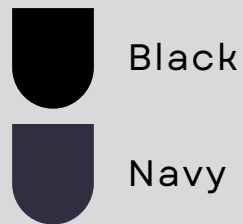


Available Colours:

- A**-Navy Pin Dot
- B**-Navy
- C**- Charcoal Pin Dot
- D**- Black

Belinda Jersey Stretch Dress

Available Colours:



- Short sleeve
- Fit and flare
- 2 bust darts
- Waist seam detail
- Unlined, concealed zip
- 67% Viscose, 29% Polyamide, 4% Elastane



Sizes:

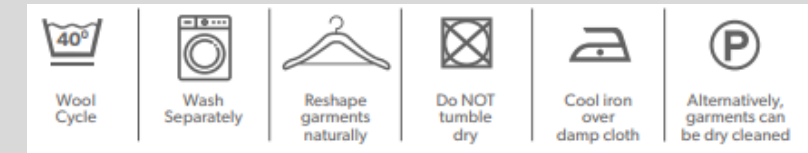
6 - 24 regular

Centre back length at size 12R = 100,5cm



Corinthia V-neck Dress

65% Polyester,
35% Wool



V-neck, short sleeve

Breast darts

Centre vent

Full stretch lining

Sizes:

6 - 24 regular

8 - 20 long

Centre back length at size 12R = 97cm



A

B

C

D

Available Colours:

A-Navy

B-Charcoal

C- Black

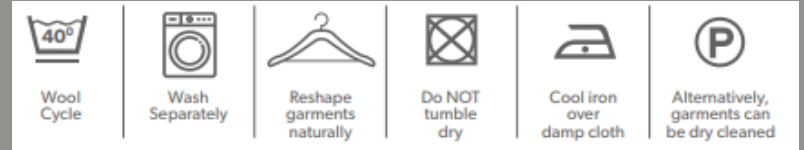
D- Mid Grey

Teramo Dress

Sizes:

6 - 24 regular
8- 20 long

Centre back length
at size 12R = 97cm

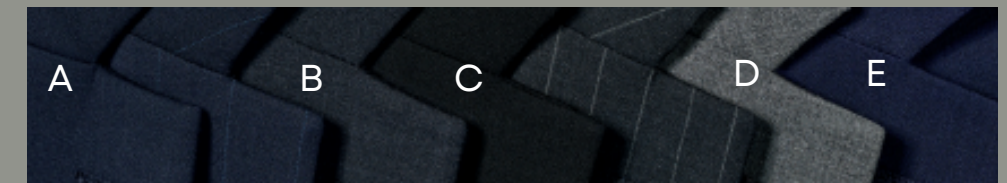


- Shift dress with princess seam
- Short sleeve, centre vent Stretch lining
- Centre back length at size 12R = 97cm
- Centre back length at size 12L = 104.5cm

54% Polyester, 44%
Wool, 2% Lycra

Available Colours:

- A-** Navy
- B-** Charcoal
- C-** Black
- D-** Light Grey
- E-** Mid Blue



morethansafety

MEN'S SHIRT

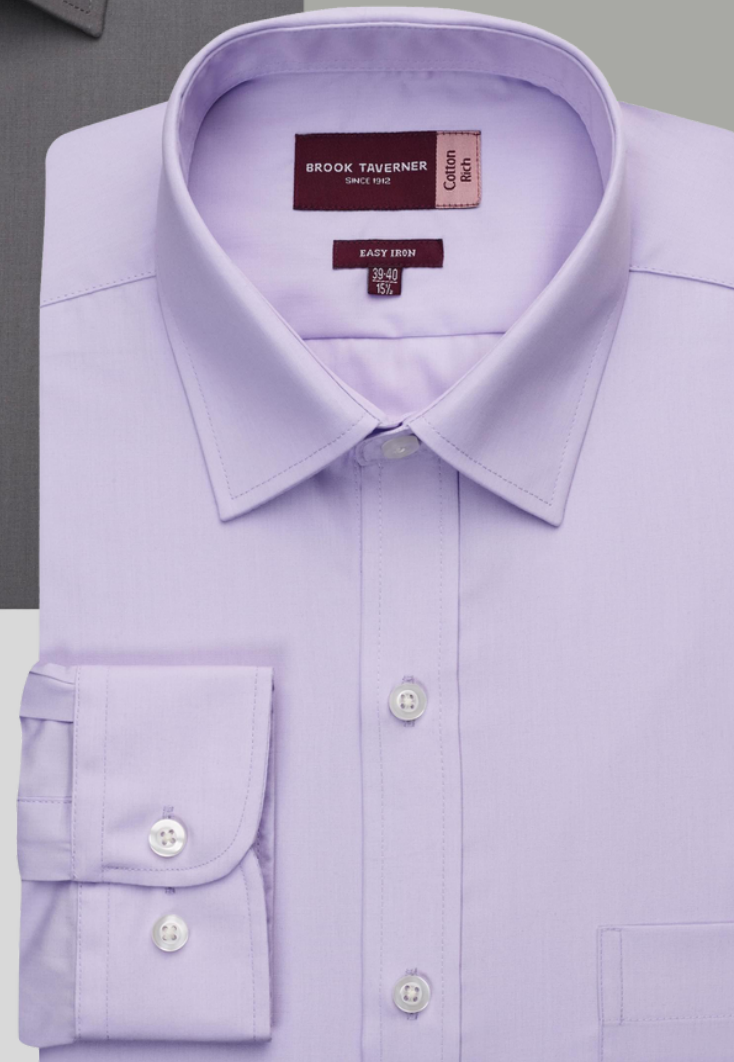
Rapino Classic Fit Shirt

- Classic fit
- Long Sleeve
- Chest pocket
- Single button cuff
- 55% Cotton, 45% Polyester
- Easy iron - poplin weave



Wool Cycle

Sizes:
14.5" - 20"



Available Colours:

- | | | | |
|--|-------|--|-------|
| | White | | Lilac |
| | Black | | Grey |
| | Blue | | Navy |



Cotton-rich
long sleeve
business shirt



morethansafety

MEN'S SHIRT

Rosello Classic Fit Shirt

Sizes:
14.5" - 20"



- Classic fit
- Short sleeve
- Chest pocket
- Single button cuff
- 55% Cotton, 45% Polyester
- easy iron - poplin weave

Alba Slim Fit Shirt



Wool Cycle

Available Colours:

- White
- Black
- Blue
- Lilac
- Grey
- Navy



- Slim fit, long sleeve
- Twin rear darts for defined silhouette
- Semi cutaway collar
- 55% Cotton, 45% Polyester - easy iron - poplin weave



Sizes:
14" - 18"

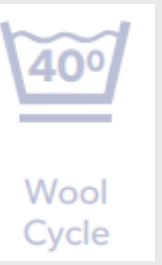
morethansafety

MEN'S SHIRT

Pisa Slim Fit Shirt

Sizes:
14.5" - 18"

Stretch cotton blend



Altare Single Cuff Shirt Cotton Herringbone

Sizes:
14.5" - 20"

*Extra long sleeve
36.5" at size 15.5"

- Slim fit
- Long sleeve
- Single 2 button cuff
- Twin rear darts for defined silhouette.
- 57% polyester, 39% cotton, 4% elastane

Available Colours:



- Classic fit
- Single cuff
- Chest pocket
- Taped seams
- Removable metal collar stiffeners
- 100% superfine cotton - easy iron

Available Colours:



morethansafety

MEN'S PREMIUM COTTON POLOS

Frederick Premium Cotton Polo



Hampton Premium Cotton Polo

Sizes:

XS 34 - 36

S 38

M 40 - 42

L 44

XL 46 - 48

2XL 50

3XL 52 - 54

- Tailored fit
- Long sleeve,
- 3 button placket
- Ribbed cuff
- 2 side splits
- 95% Cotton, 5% Elastane

Available Colours:



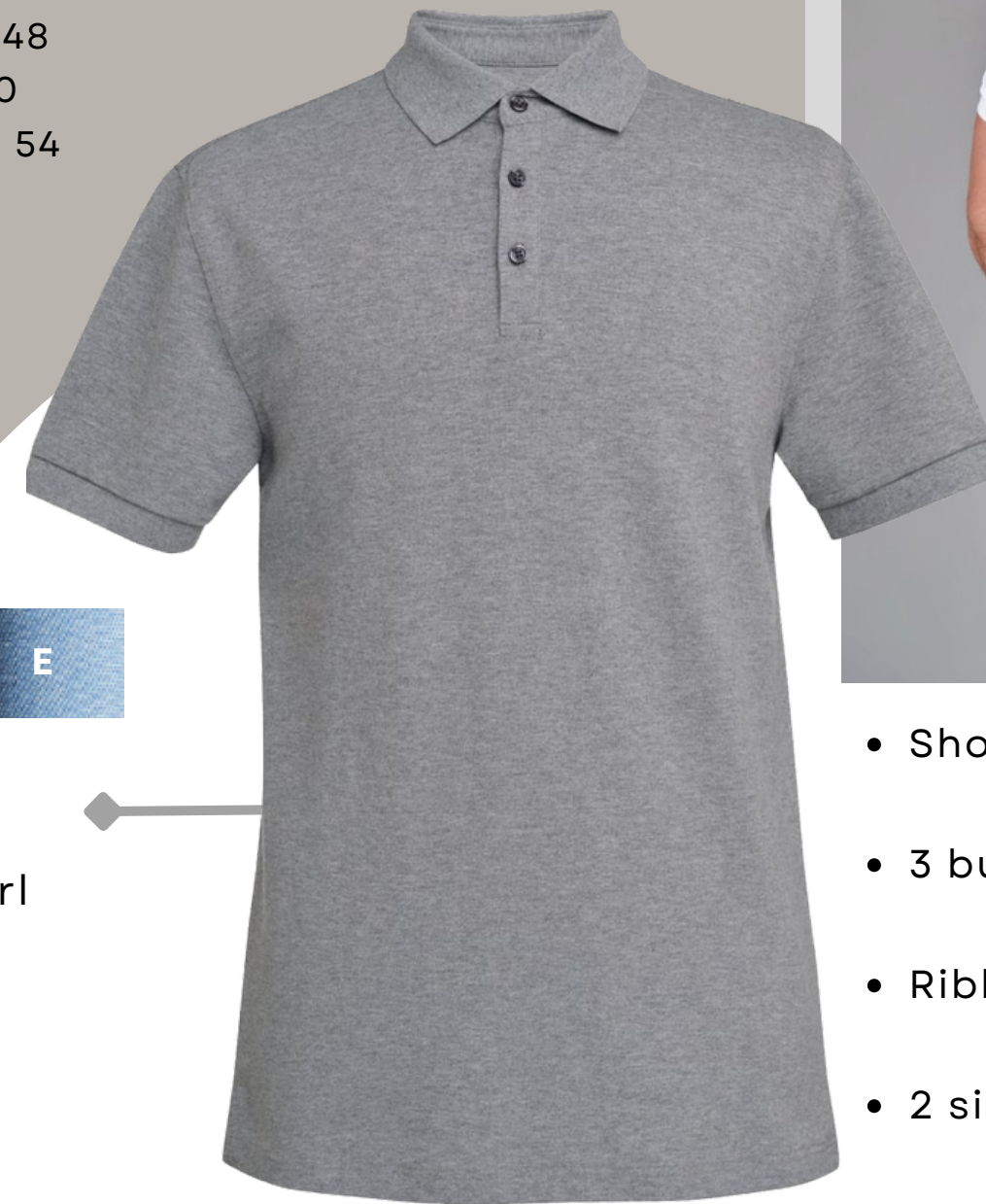
A- White

B- Navy

C- Grey Marl

D- Black

E- Sky Marl



Machine Washable



Wash Separately



Reshape garments naturally



Cool Iron over damp cloth



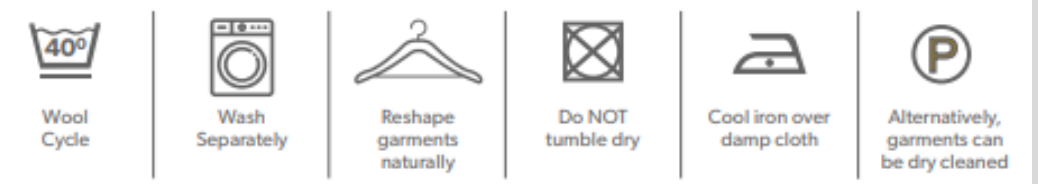
Cool tumble dry



Do NOT dry clean



- Short sleeve
- 3 button placket
- Ribbed cuff
- 2 side splits
- 95% Cotton, 5% Elastane



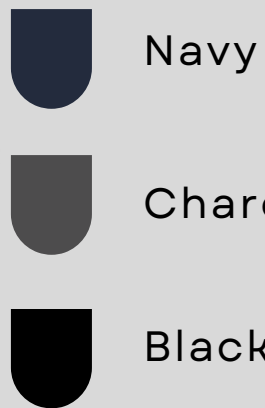
Dallas 1/4 zip Jumper



- Sizes:**
 XS = 34/36
 S = 38
 M = 40/42
 L = 44
 XL = 46/48
 2XL = 50
 3XL = 52/54



Available Colours:



- 1/4 zip jumper
- Faux leather zip pull
- Ribbed neck
- Cuff and hem, contrast inner neck strip
- 60% Cotton / 40% Acrylic - 12 Gauge Knit

Boston V-neck Jumper



Sizes:

- XS = 34/36
 S = 38
 M = 40/42
 L = 44
 XL = 46/48
 2XL = 50
 3XL = 52/54

Available Colours:



morethansafety

MEN'S KNITWEAR

Detroit V-neck Slipover

Sizes:

- XS = 34/36
- S = 38
- M = 40/42
- L = 44
- XL = 46/48
- 2XL = 50
- 3XL = 52/54

Available Colours:



-  Light Blue
-  Royal Blue
-  Navy
-  Charcoal
-  Black



Ribbed neck

V-neck, sleeveless

Contrast inner neck strip

Armhole & hem

60% Cotton / 40%
Acrylic - 12 Gauge Knit



Wool Cycle



Wash Separately



Reshape garments naturally



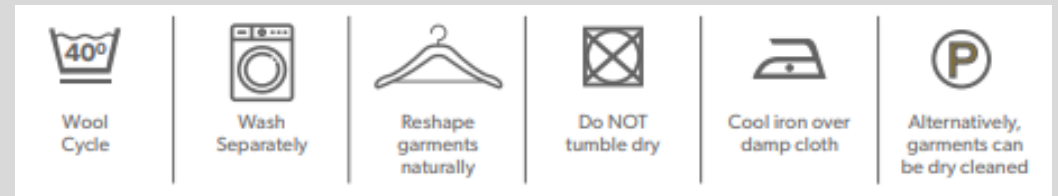
Do NOT tumble dry



Cool iron over damp cloth



Alternatively, garments can be dry cleaned



Emilio Check Waistcoat



A- Navy Check B- Grey check C- Green check



- 5 button front, 2 welt pockets,
- Part lining back with adjuster
- 64% Polyester, 34% Viscose, 2% Lycra

Sizes:

S 34-36 M 38-40 L 42-44
XL 46-48 2XL 50-52

Centre back length at size M = 62cm

Memphis Men's Waistcoat



40% Polyester, 40% Wool, 20% Mixed Fibres with Teflon finish

Sizes:

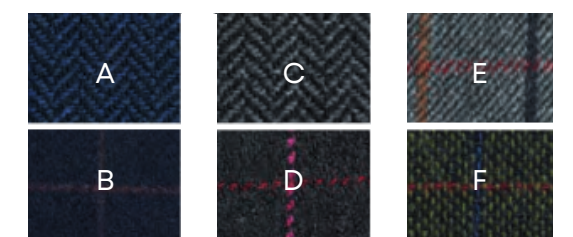
S 34 - 36 M 38 - 40 L 42 - 44 XL 46 - 48 2XL 50 - 52

Centre back length at size M = 62cm



Available Colours:

- A- Navy Herringbone
- B- Navy Check
- C- Grey Herringbone
- D- Charcoal Pink Check
- E- Grey Brown Check
- F- Green Blue Check



Phoenix Tailored Fit Jacket



Available Colours :

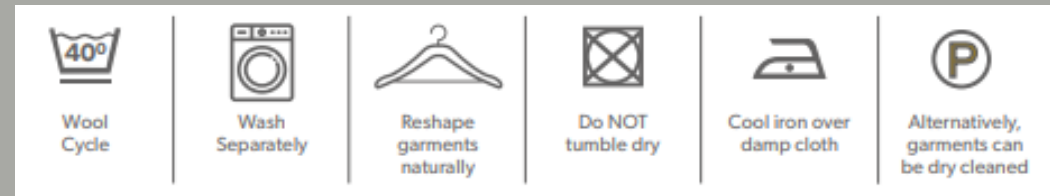
- A**-Navy Pin Dot **C**- Charcoal Pin Dot
- B**-Navy **D**- Black

- 2 button jacket
- Side vents
- Tailored fit
- 64% Polyester, 34% Viscose, 2% Lycra

Sizes:

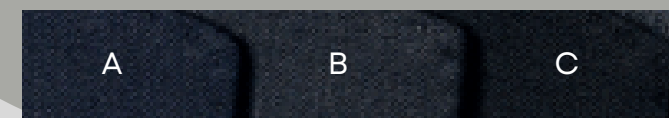
- 36-48 short
- 34-56 regular
- 38-48 long

Centre back length at size 40R = 77cm



Langham Classic Fit Jacket

- Sizes:**
36-48 short
34-56 regular
38-48 long



- A**-Navy **B**-Charcoal **C**- Black







- Single breasted classic fit jacket
- 3 button front, centre vent, 3 inside pockets
- Mobile phone pocket
- 64% Recycled Polyester, 34% Wool, 2% Lycra
- Centre back length at size 40R = 77cm



morethansafety

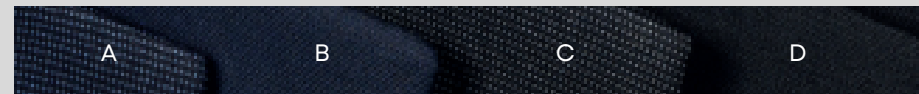
MEN'S JACKETS

Pegasus Slim Fit Jacket

 Wool Cycle	 Wash Separately	 Reshape garments naturally	 Do NOT tumble dry	 Cool iron over damp cloth	 Alternatively, garments can be dry cleaned
--	---	--	---	---	--



- Slim fit
- Peaked lapel
- 1 button
- Twin rear vents
- 64% Recycled Polyester, 34% Viscose, 2% Lycra
- Centre back length at size 40R = 76cm



Available Colours :

- | | |
|------------------------|-----------------------------|
| A -Navy Pin Dot | C - Charcoal Pin Dot |
| B -Navy | D - Black |

Sizes:
34-44 short
34-46 regular
34-44 long

Langham Single Pleat Trousers

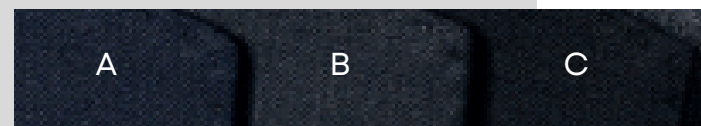


- Single pleat classic fit trouser
- 2 side pockets, 1 rear pocket
- Half hem width at waist size 34" = 22cm
- 65% Polyester, 35% Wool with Shape Memory Stretch Technology

Sizes:

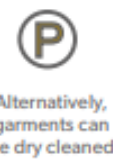
28-56 - waist in leg lengths 29.5", 31.5", 33" & 36" unfinished

Available Colours:



A-Navy B-Charcoal C- Black

Phoenix Tailored Fit Trousers



Sizes:

28" - 52" - waist in leg lengths:
S - 29.5"
R - 31.5"
L - 33"
& 36" unfinished



- Tailored fit, flat front
- Half hem width at waist size 34" = 21cm
- 64% Polyester, 34% Viscose, 2% Elastane

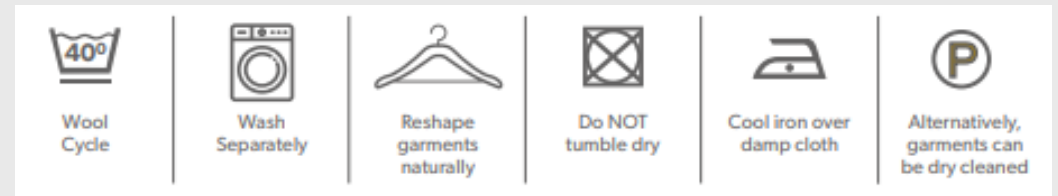
Available Colours :

A-Navy Pin Dot B-Navy C- Charcoal Pin Dot D- Black

morethansafety

MEN'S TROUSERS

Denver Classic Fit Chino



Available Colours:

- A-Navy
- B-Beige
- C- Grey
- D-Black
- E- Olive
- F- Royal
- G-Tan



Telephone pocket

Classic fit, Flat front

Side pockets

Twin hip jett pockets with button

Stretch waistband

97% Cotton 3% Elastane

Sizes:

28" - 52" - waist in leg lengths:

S - 29.5"

R - 31.5"

L - 33"

& 36" unfinished

Wash Care Instructions:



Micro Waffle Tie

Size:
One size



- Blade width 3". Length 57". WRAP Certified production
- Material: 100% polyester



Available Colours:

- A-Aubergine
- B-Black
- C-Brown
- D- Dark Grey
- E-Lime
- F- Navy
- G-Purple
- H- Red
- I- Royal Blue
- J- Silver
- K- Sunflower
- L- Turquoise



'Colours Originals' fashion tie

Size:
One size



- Blade width: 4"/10cm length: 57"/144cm
- Material: 100% polyester



Available Colours:

- A-Black
- B-Bottle
- C-Brown
- D- Burgundy
- E-Emerald
- F- Gold
- G-Grass
- H- Grey
- I- Khaki
- J- Lime
- K- Mid blue
- L- Navy
- M-Orange
- N- Purple
- O- Red
- P- Royal
- Q- Silver
- R- Turquoise



'Colours' Chiffon scarf

Size:
One size



- Width 6.5". Length 38.5"
- Material: 100% polyester chiffon weave

Available Colours:

- | | |
|-----------------|--------------------|
| 1-Apple | 20- Navy |
| 2-Aubergine | 21- Oasis Green |
| 3-Black | 22- Olive |
| 4- Bottle | 23- Orange |
| 5-Brown | 24- Pink |
| 6- Burgundy | 25- Purple |
| 7-Chestnut | 26- Red |
| 8- Dark Grey | 27- Rich Violet |
| 9- Emerald | 28- Royal |
| 10- Fuchsia | 29- Sage |
| 11- Hot Pink | 30- Sapphire |
| 12- Khaki | 31- Silver |
| 13-Lemon | 32- Steel |
| 14- Light Blue | 33- Strawberry Red |
| 15- Lilac | 34- Sunflower |
| 16- Lime | 35- Teal |
| 17- Marine Blue | 36- Terracotta |
| 18- Mid Blue | 37- Turquoise |
| 19- Natural | 38- White |



Wash Care Instructions:





'Colours' Scarf

Size:
One size



Available Colours:

- | | |
|---------------------|----------------------|
| A -Black | K - Navy |
| B -Bottle | L - Orange |
| C -Burgundy | M -Purple |
| D - Emerald | N - Red |
| E -Fuchsia | O - Royal |
| F - Gold | P - Silver |
| G -Grey | Q - Turquoise |
| H - Khaki | R - White |
| I - Magenta | |
| J - Mid Blue | |



- Width 10". Length 55". Suitable for screenprinting.
- Material: 100% polyester.