

# Lockout / Tagout



## 60300

### Simple Cable Lockout

Standard steel shackle padlock keyed to differ.

Comes with key retaining feature so when the shackle is open, the key cannot be removed from the padlock to reduce loss of misplaced keys.

Durable, non-conductive Nylon PA lock body. Can withstand temperature from -20°C to 150° and is resistant to UV rays.

Steel Shackle 26 x 38mm  
6mm Shackle Diameter  
Nylon PA body 38 x 45mm



## 6030060

### Steel Shackle Red Loto Padlock

Comes with key retaining feature so when the shackle is open, the key cannot be removed from the padlock to reduce loss of misplaced keys.

Durable, non-conductive Nylon PA lock body. Can withstand temperature from -20°C to 150° and is resistant to UV rays.

Nylon Shackle 26 x 38mm  
6mm Shackle Diameter  
Nylon PA body 38 x 45mm



## 6030061

### 2x PA Coated Steel Hasp (25mm)

Scissor action coated steel hasp.

Made from engineering plastic nylon PA injection moulding. Features a galvanised rustproof surface.

Hasp dimensions 40 x 115mm  
Lock hole diameter 10.5mm  
Lock shackle diameter 25mm  
Lock shackle 1" (25mm)



## 6030062

### Nylon Lockout Hasp

43mm x 173mm

Heavy duty flexible nylon lockout hasp. Made using a high fire-resistant aluminium alloy coated in nylon. Can be applied to areas which require electric power isolation and lock has a high resistance to corrosion. Explosion proof. To open, push up and down. Accepts padlocks with a shackle diameter up to 9mm. Allows up to 6 padlocks. Nylon shackle diameter 6mm

**6030067****Simple Circuit Breaker Lockout**

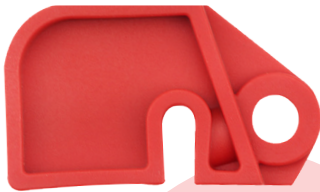
45mm × 25mm × 10mm

Single pole miniature circuit breaker lockout. Manufactured from rugged reinforced PA. Can be locked out using a screwdriver or using a safety padlock. Suitable for single pole miniature circuit breakers with handle width <7.7mm. For padlocks with shackle diameter up to 7mm.

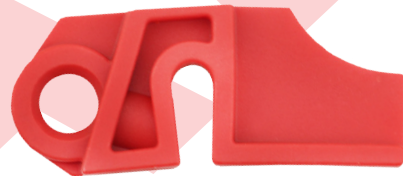
**6030068****Simple Circuit Breaker Lockout**

51mm × 25mm × 23mm

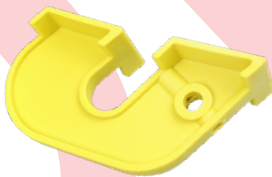
2-4 pole miniature circuit breaker lockout. Manufactured from rugged reinforced PA. Can be locked out using a screwdriver or using a safety padlock. Suitable for 2 to 4 pole miniature circuit breakers <10mm. For padlocks with shackle diameter up to 7mm.

**6030069****Simple Circuit Breaker Lockout**

Manufactured from rugged reinforced PA. Can be locked out using a screwdriver or using a safety padlock. Suitable for mini and middle sized circuit breakers with handle width <5mm. Accommodates padlocks with shackle diameter up to 7mm.

**6030070****Simple Circuit Breaker Lockout**

Mini and middle size circuit breaker lockout. Manufactured from rugged reinforced PA. Can be locked out using a screwdriver or using a safety padlock. Suitable for mini and middle sized circuit breakers with handle width <5mm. For padlocks with shackle diameter up to 7mm.

**6030071****Simple Circuit Breaker Lockout**

125mm × 63mm × 40mm

Large size circuit breaker lockout. Manufactured from rugged reinforced PA. Can be locked out using a screwdriver or using a safety padlock. Can be used for most types of circuit breakers. Suitable for large sized circuit breakers. For padlocks with shackle diameter up to 7mm.

**6030075****Cylinder Tank Lockout**

For neck rings up to 89mm in diameter

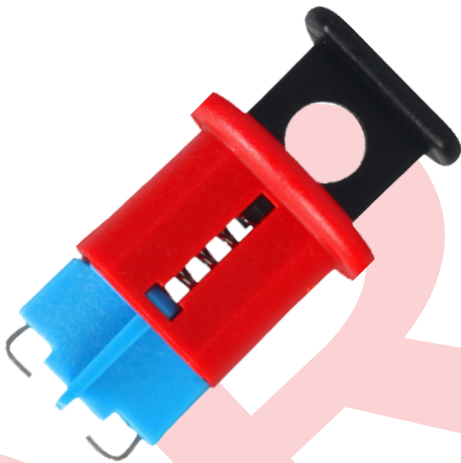
Prevents access to the main cylinder valve with no need to match your lockout device to varying diameter and threads of cylinder caps. Can be locked out by up to 3 padlocks simultaneously. Max. diameter neck ring of 80mm. Padlock shackle diameter up to 7mm.

**6030065****Miniature Circuit Breaker Lockout**

Pin Out Standard

Nylon PA standard miniature circuit breaker pin out.

Manufactured from strong nylon, this miniature circuit breaker lockout allows for individual breakers to be locked off. Fits most existing types of European and Asian circuit breakers. Easily installed using the aid of a push button or a rotate roller. Recommended to be used in combination with a safety padlock to secure the lockout in place. Use padlocks with shackle diameter up to 7mm. Pin out standard. Hole Spacing <12mm.

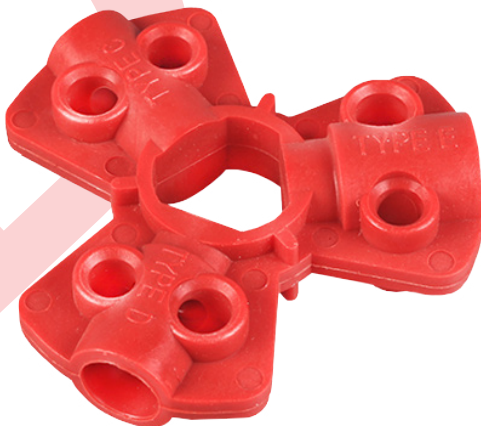
**6030066****Miniature Circuit Breaker Lockout**

Pin In Standard

Nylon PA standard miniature circuit breaker pin in.

Manufactured from strong nylon, this miniature circuit breaker lockout allows for individual breakers to be locked off. Fits most existing types of European and Asian circuit breakers. Easily installed using the aid of a push button or a rotate roller. Recommended to be used in combination with a safety padlock to secure the lockout in place.

Use padlocks with shackle diameter up to 7mm  
Pin in standard. Hole Spacing <12mm

**6030074****Pneumatic Quick-Disconnect Lockout**

Fitted with 6.4mm 9.5mm & 12.7mm screwed joints Isolate pneumatic energy without the expense of installing in-line lockout valves.

Without the need to install a straight interlock valve, you can isolate pneumatic power, resulting in a lower cost and more convenient solution. The lockout is applied to the male fitting to isolate equipment from all compressed air sources. The hole in the centre of the device allows for pneumatic storage on an air hose and a loop on the side can be used to hang the hose and lockout device.

Can be equipped with padlocks where lock shackle length diameter is 6.4mm or 7.1mm. Made from impact resistant engineering plastic nylon PA

**6030073****Clamp-On Breaker Lockout**

480 - 600V

Ideal for circuit breakers with no built in locking facility.

The design clasps onto the switch providing secure locking protection with a new blade design to provide a tighter grip with less torque applied to the thumbscrew. Use the thumbscrew to clamp the lockout securely onto the switch tongue. Then pull the cover and lock into place to prevent the clamp from being loosened. Detachable cleats expand the range of applicable breakers.

Can lock a handle with width <72mm

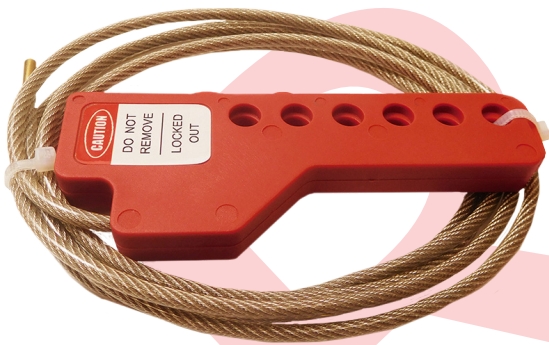
Lockable range 22 x 68mm

Can be locked out using padlocks with shackle diameters up to 7mm. Made from rugged Polypropylene (PP) and impact modified PA.

**6030076****Simple Cable Lockout**

Simple cable lockout for locking off multiple isolaters.

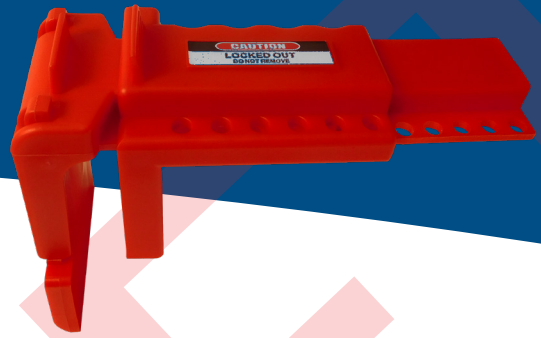
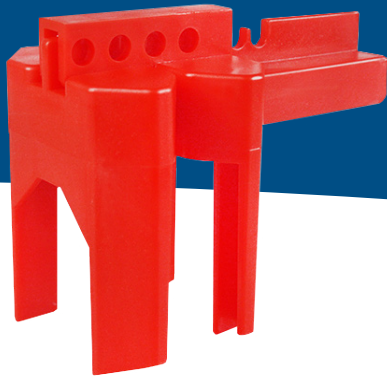
A flexible and cost effective method for locking off multiple isolaters situated next to each other. Made from impact resistant engineering plastic nylon PA. The outer layer of cable is made from anti-UV PVC. Inner material has two choices available: Nylon and metal (stainless steel).

**6030072****Lockout Bag 440mm×250mm**

This lockout bag is best used for locking out junction boxes and elevator controllers. Simply slide the device inside, tighten the top of the bag and lock out the cord to ensure the bag cannot be pulled off. Made from wear resisting polyester cloth and features a PVC liner to prevent others from making contact with any buttons through the bag. Can lock out many kinds of driving controller buttons or all kinds of special large sized plugs and accessories. Strap can be locked out by up to 6 padlocks or hasps





**6030063**
**Adjustable Ball Valve Lockout**  
**0.5" to 2.5"**

Polypropylene Adjustable Ball Valve Lockout.

These simple, easy to use lockouts clamp over the ball valve lever on the pipe, preventing the valve from operating. Use a padlock to lock the lockout in place on the valve. Made from polypropylene. Suitable for 13mm (1/2") to 64mm (2 1/2") pipes. Padlock shackle max diameter 9mm.

**6030064**
**Adjustable Ball Valve Lockout**  
**1.5" to 2.5"**

Heavy duty polypropylene adjustable ball valve lockout.

Manufactured from ultra-tough, high temperature resistant polypropylene. The two halves of the device encompass the ball valve lever to prevent inadvertent activation of the valve. Made from high temperature, high strength hot plastic Polypropylene (PP). Lock out double roll valves. With auxiliary rear gear parts, locked heightening extended ball valve. Suitable for 13mm to 70mm pipes. Max padlock shackle diameter 9mm.

**6030077**
**Gate Valve Lockout 5" to 6.5"**

Gate Valve Cover Lockout

Gate valve covers are a simple, low cost but effective way to prevent unauthorised operation of valves. Once locked, the cover rotates freely around the valve handwheel without applying pressure, thus preventing operation. The different sized semicircle design allows for the two parts to be combined into one semicircle when storing and carrying for volume reduction. Padlock shackle diameter up to 7mm can be used. Valve rod diameter from 127mm (5") to 165mm (6.5").

**6030078**
**New Gate Valve Lockout 1" -2.5"**

Gate Valve Cover Lockout

Gate valve covers are a simple, low cost but effective way to prevent unauthorised operation of valves. Once locked, the cover rotates freely around the valve handwheel without applying pressure, thus preventing operation. The different sized semicircle design allows for the two parts to be combined into one semicircle when storing and carrying for volume reduction. Padlock shackle diameter up to 7mm can be used. Valve rod diameter from 25mm (1") to 64mm (2.5").



**6220033**

### Approved Mobile Loto Bag (Electrical)

Red with white tubing. Material: 600D polyester.

Branded Electrical Mobile LOTO Kit.

Retro styling. Adjustable shoulder strap.  
Front zip pocket.  
Internal valuables pocket. Capacity 7 litres.



**6220035**

### Approved Mobile Loto Bag (F-Gas)

French Navy with White tubing.  
Material: 600D polyester.

Branded F-Gas Mobile LOTO Kit.

Retro styling. Adjustable shoulder strap. Front zip pocket.  
Internal valuables pocket. Capacity 7 litres.



**6220034**

### Approved Mobile Loto Bag (Combustion)

Black with white tubing. Material: 600D polyester.

Branded with and Gas Safe Combustion Mobile LOTO Kit.

Retro styling. Adjustable shoulder strap. Front zip pocket.  
Internal valuables pocket. Capacity 7 litres.



**6210167**

### Branded Static Wall Mounted Lock Out Station - Yellow

**5904403**

### Fully Insulated Plain Slot Screwdriver 3 x 100mm

Manufactured and individually certified to EN 60900

Expert Quality, tested to 10kV, suitable for working on live circuits of 1kV AC and 1.5kV DC. Made with SVCM alloy steel blades which are hardened, tempered and chemically blacked. Fully insulated ergonomic soft grip handle with deep set blade sheath for total safety. Sold loose.

**6011083**

### Permanent Marker Pen

For writing on tags used in Lockout / Tagout situations.

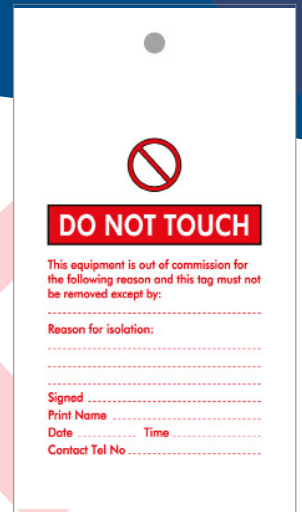
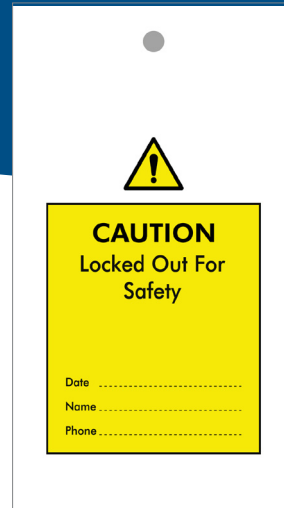
**9250168**

### Gas Safe Sticker - Danger Do Not Use

Sticker. Printed Gas Safety. Danger Do Not Use message.

150mm x 141mm





**6011703**

**Tag Single Sided Printed Live Eqpt.  
Do Not Touch (Pack of 10)**

**6011704**

**Tag-Double Sided Printed  
Inspection / Caution (Pack of 10)**



**6011712**

**Gas Safe Double Sided Tag  
- Immediate Danger (Pack of 10)**

**6011713**

**Gas Safe Double Sided Tag  
- At Risk (Pack of 10)**

Tag - Double Sided. Gas Safe Printed.  
Immediate Danger message supplied in a pack of 10.  
160mm x 160mm x 160mm

Tag - Double Sided. Gas Safe printed. At Risk message  
supplied in a pack of 10. Size: 80mm x 145mm



**6030079**  
**Approved**  
**Electrical Mobile Loto Kit**



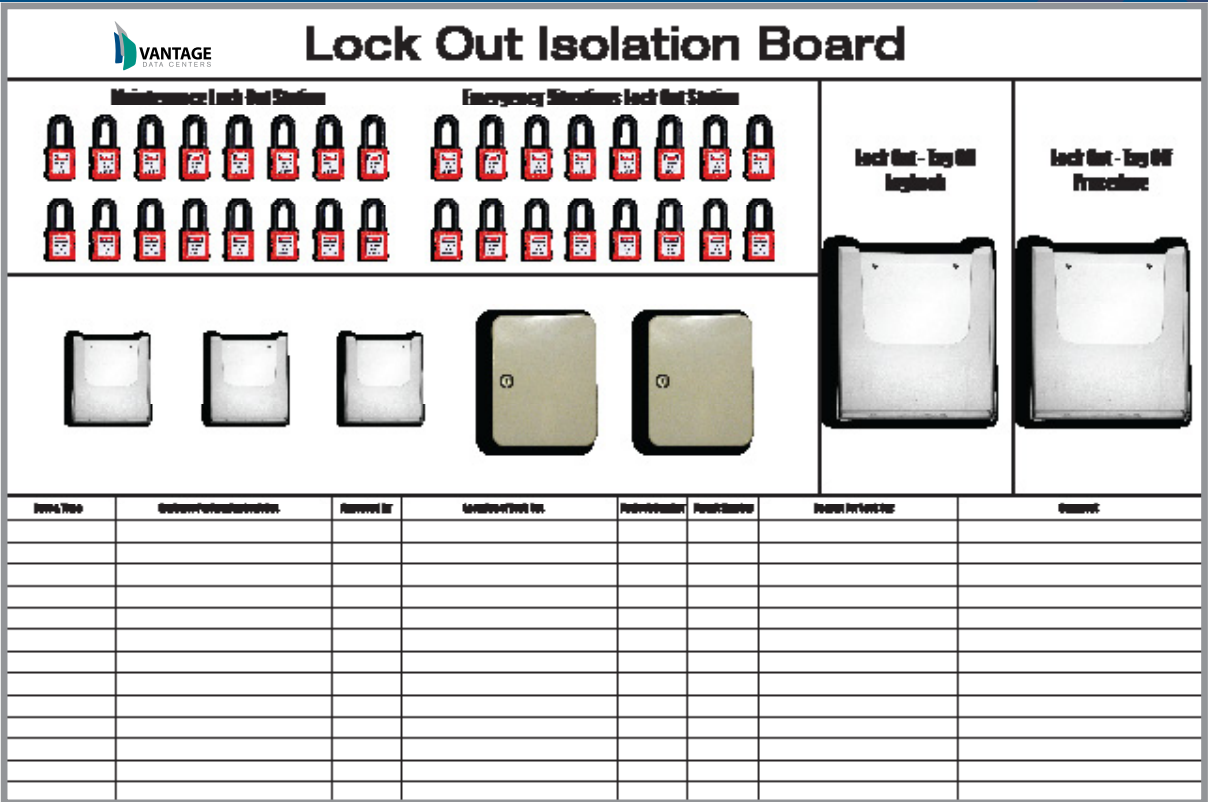
**6030081**  
**Approved**  
**F-Gas Mobile Loto Kit**



**6030079**  
**Approved**  
**Electrical Mobile Loto Kit**



**6030082**  
**Approved Static**  
**Loto Kit**



## 9270004 - LOTO BOARD

Orientation: Landscape      Size: 1804 x 1204mm

Design printed onto 100 micron white gloss self-adhesive vinyl, laminated with dry wipe film, and applied to 5mm PVC white foam board and mounted onto 10mil black PVC foam.

Supplied with:

- 2 Key cabinets.
- 32 Red padlocks.
- 2 x A4 Transparent Document Holders
- 3 x A6 Transparent Document Holders
- Self tapping screws for use with document holders and key cabinets
- Cup hooks for use with padlocks for lock out stations

**Notes:** Artwork not to size. Please allow 7 - 10 working days for production.  
Items may also vary due to changes in EHSE and Technical Approved LOTO.

**MTS reserve the right to change the items supplied in this catalogue based on availability or instruction from EHSE or technical leads. Content is also subject to change.**